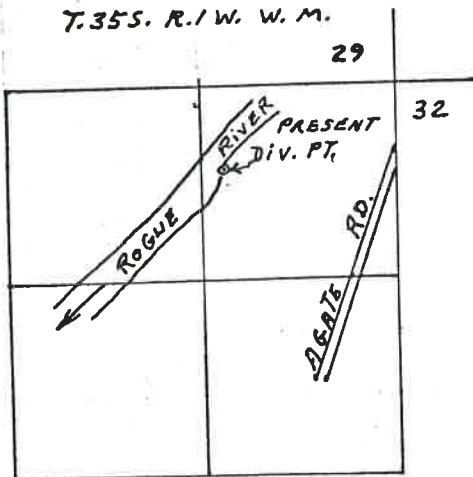


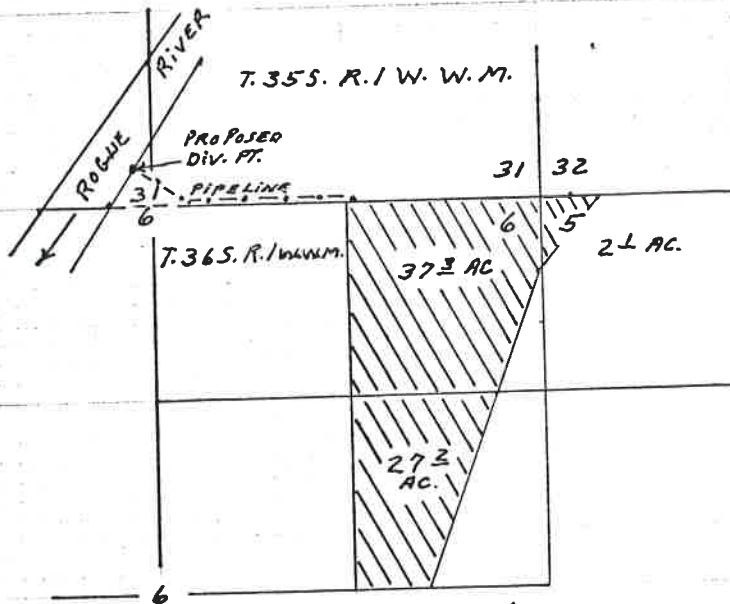
Benjamin L. and Betty J. Long
Change in point of diversion map

SF
32722

T. 3186
Priority 1898



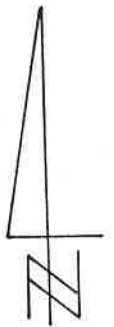
DIV. PT. IS LOCATED 580'S. AND 1175' W. FROM THE N. 1/4 COR. OF SEC. 32.



DIV. PT. IS LOCATED 280' N. AND 130' W. FROM THE S 1/4 COR. OF SEC. 31

MAP TO ACCOMPANY APPLICATION OF BENJAMIN L. LONG AND BETTY J. LONG FOR CHANGE IN POINT OF DIVERSION.

SCALE 4" = 1 MILE



3-21-75

this set map filed in other township too.

D. F. W.

BAX-3AA-56