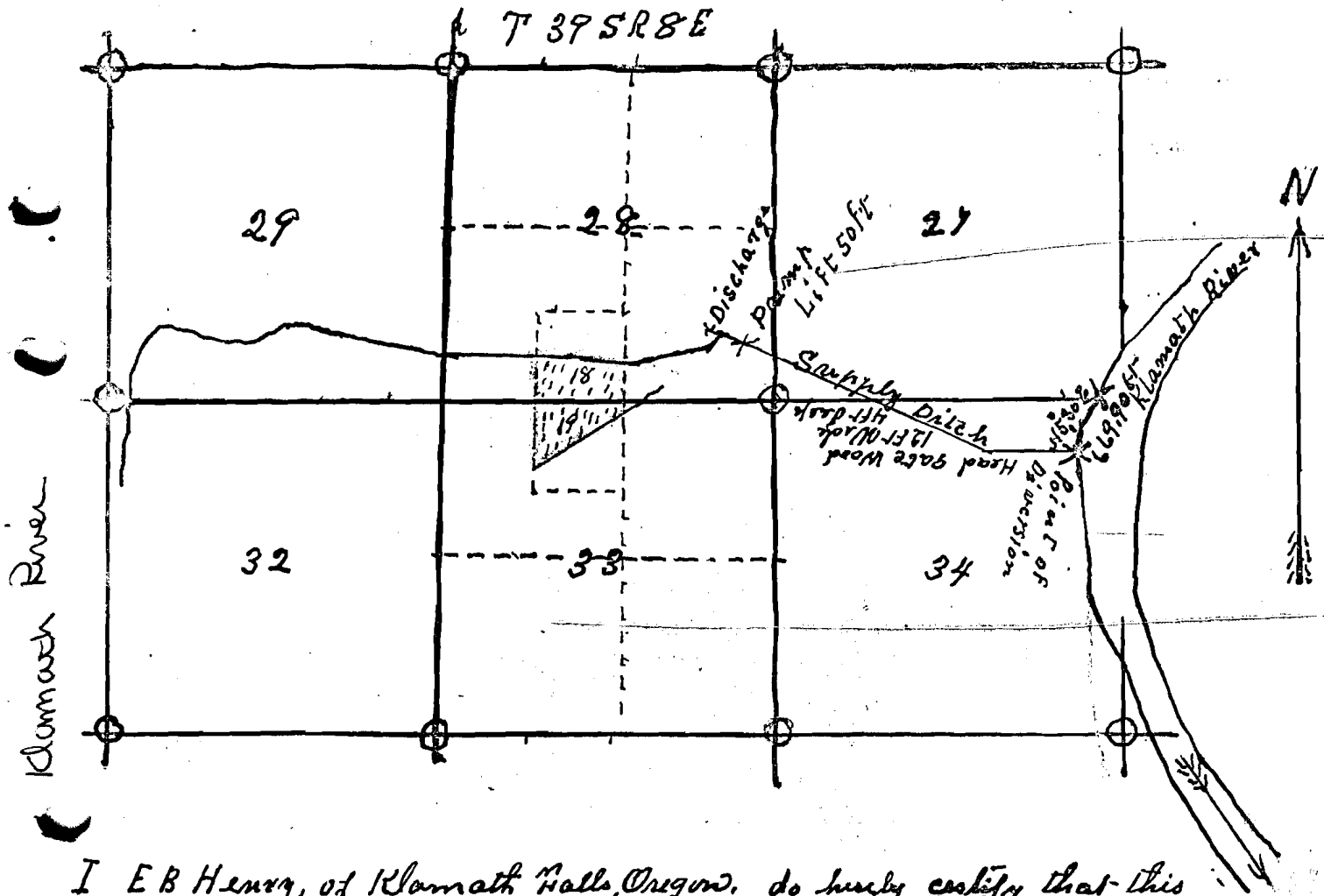


Map of Emmitt Ditch



I E B Henry, of Klamath Falls, Oregon, do hereby certify that this was made from notes taken during an actual survey made under my immediate supervision on the 15th day of December 1915 and that it correctly represents the works described in the accompanying application together with the location of streams and other ditches in the immediate vicinity, and has written thereon the acres in each smallest legal subdivision which it is proposed to irrigate

E B Henry
Surveyor

OFFICE OF STATE ENGINEER
AUG 24 1903
SOLICITORS - OREGON

Application No. 7495
Permit No. 4873