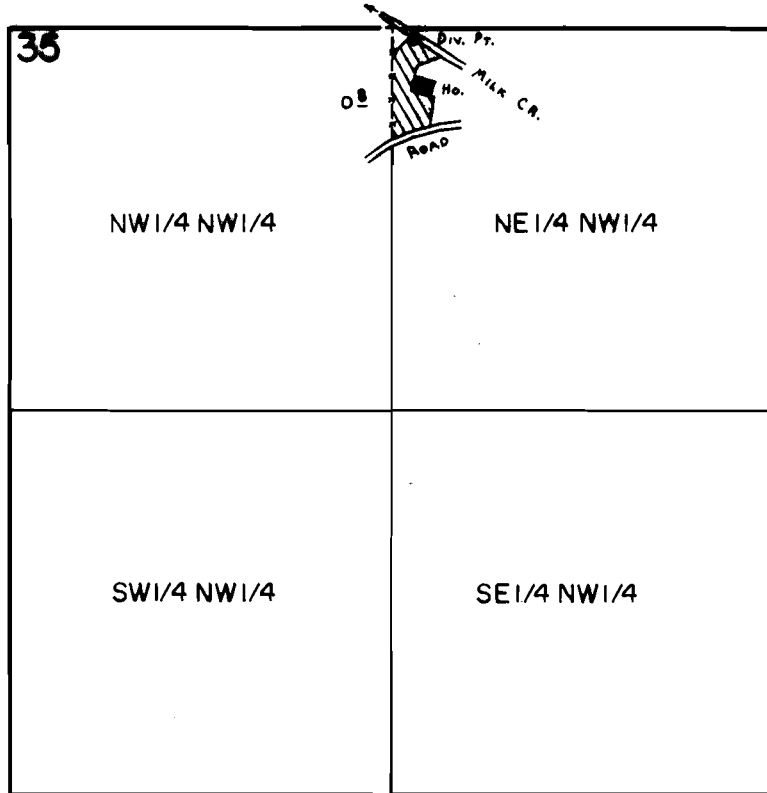


T4S. R2E. WM.



Div. Pt. Loc: 35' S. & 75' E. fr. NE Cor. of NW 1/4 NW 1/4 of Sec. 35.
SCALE: 8 IN = 1 MILE

FINAL PROOF SURVEY UNDER

Application No. 56429 Permit No. 42304
IN NAME OF

ERNEST M. BROWN

Surveyed SEPT. 25 1978, by C. L. HUGHES