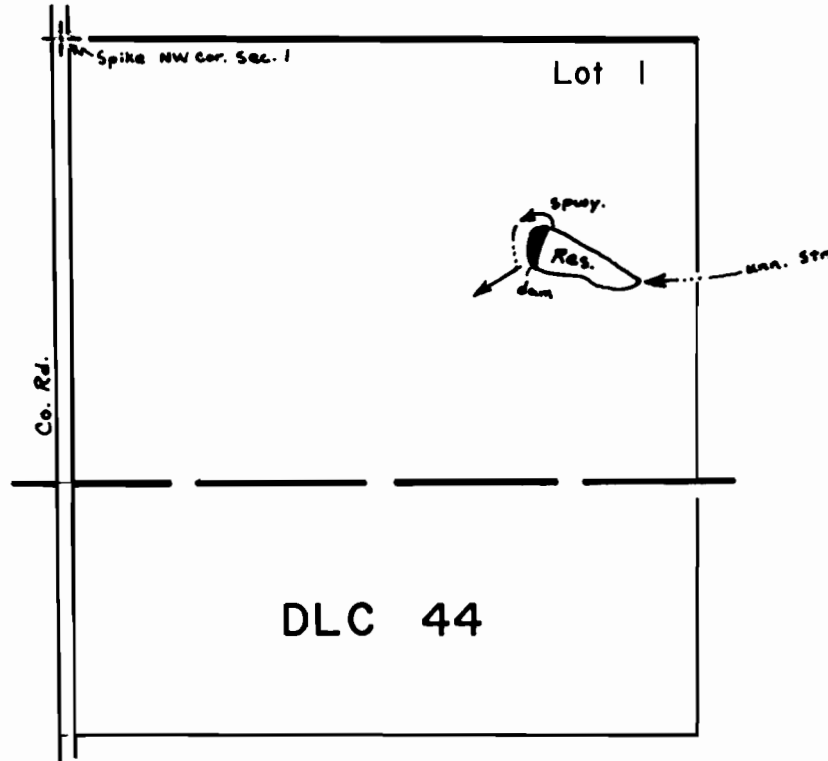


T.27S. R.7W. W.M.

Sec. 1

NW 1/4 NW 1/4



Dam Located: 400' S & 1000' E from
the NW corner of Sec. 1

SCALE: 1" = 400'

FINAL PROOF SURVEY
UNDER

Application No. R-52837 Permit No. R-6389
IN NAME OF

RAYMOND E. BAGWELL

Surveyed Dec. 13, 1978, by S. Donaldson.