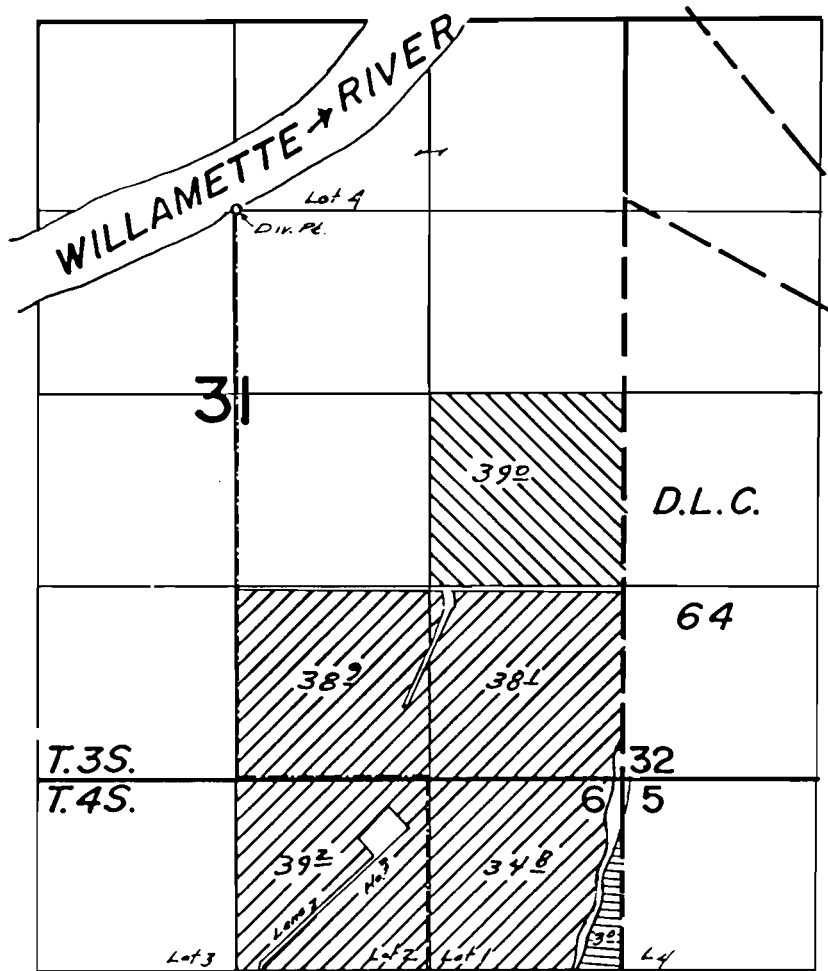


# T.3&4S. R.2W. W.M.



Div. Pl. Loc. - 1320' N. & 20' E from C 1/4 Cor. Sec. 31

## FINAL PROOF SURVEY UNDER

[Diagonal hatching] - SUPPLEMENTAL

[Horizontal hatching] - PRIMARY

[Vertical hatching] - App. 59493

Application No. 59493 / 51244 Permit No. 44735 / 42523  
IN NAME OF

ROBERT C. NIEHUS

Surveyed July 5 1978, by R.G. Mucken  
July 11 1980, by C.L. Hughes