

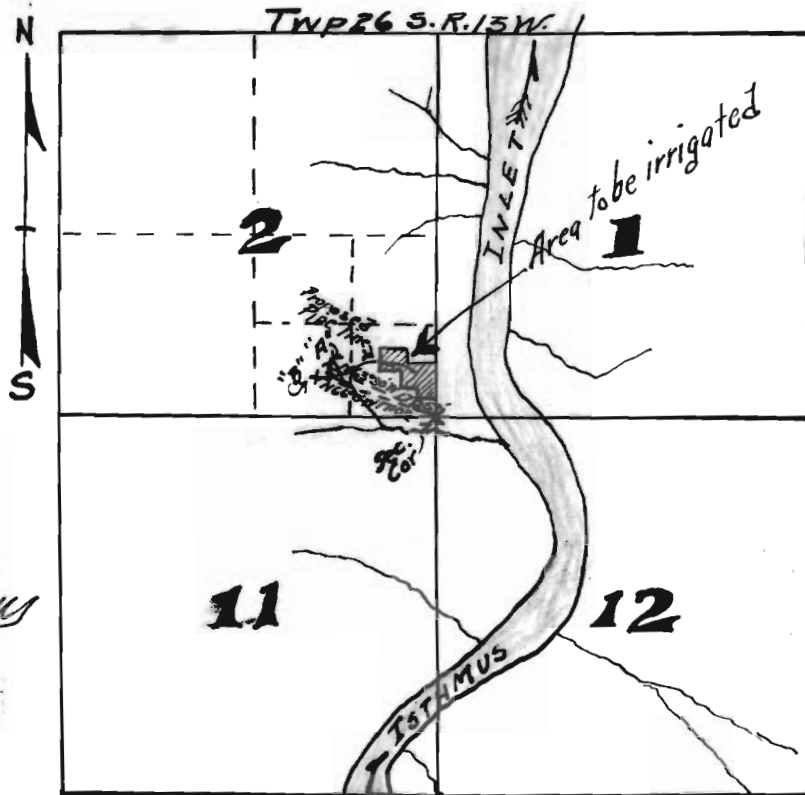
42801

MAP
To Accompany Application of
ODD FELLOWS CEMETERY CORPORATION
for a permit to appropriate water
in Sec 2, Twp 26 S. R. 13 W.

STATE ENGINEER
RECEIVED

MAR 5 1926

SALEM, OREGON



Scale
40 Chains = one inch.

Application No. 10624
Permit No. 7228

I, D.L. Buckingham of Marshfield, Oregon, hereby
certify that this map was made from notes taken
during an actual survey made under my direction
March 3, 1926 and that it correctly represents the works
described in the accompanying application together
with the streams in the immediate vicinity

D.L. Buckingham