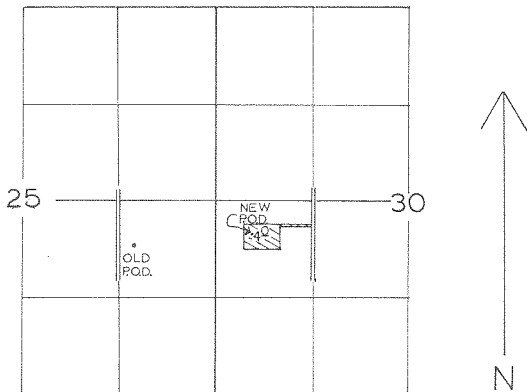


*Prigel Associates*

T# 3587  
PERMIT # G-1991  
49212

T6N R35&36E.W.M.

ADD. P.O.D.



LAND INVOLVED WITH THE CHANGE IN THE P.O.D.

OLD P.O.D. 610' S. & 1100' W. FROM THE E&S CORNER OF SECTION 25 T.6N.R.35E.W.M.

NEW P.O.D. 440' S. & 500' E. FROM THE W&S CORNER OF SECTION 30 T.6N.R.36E.W.M.

SCALE 4 1/2" = 1 MILE