

SECTION 22 T12S R11W WM
LINCOLN COUNTY

1" = 400'

For Assessors Office Use Only

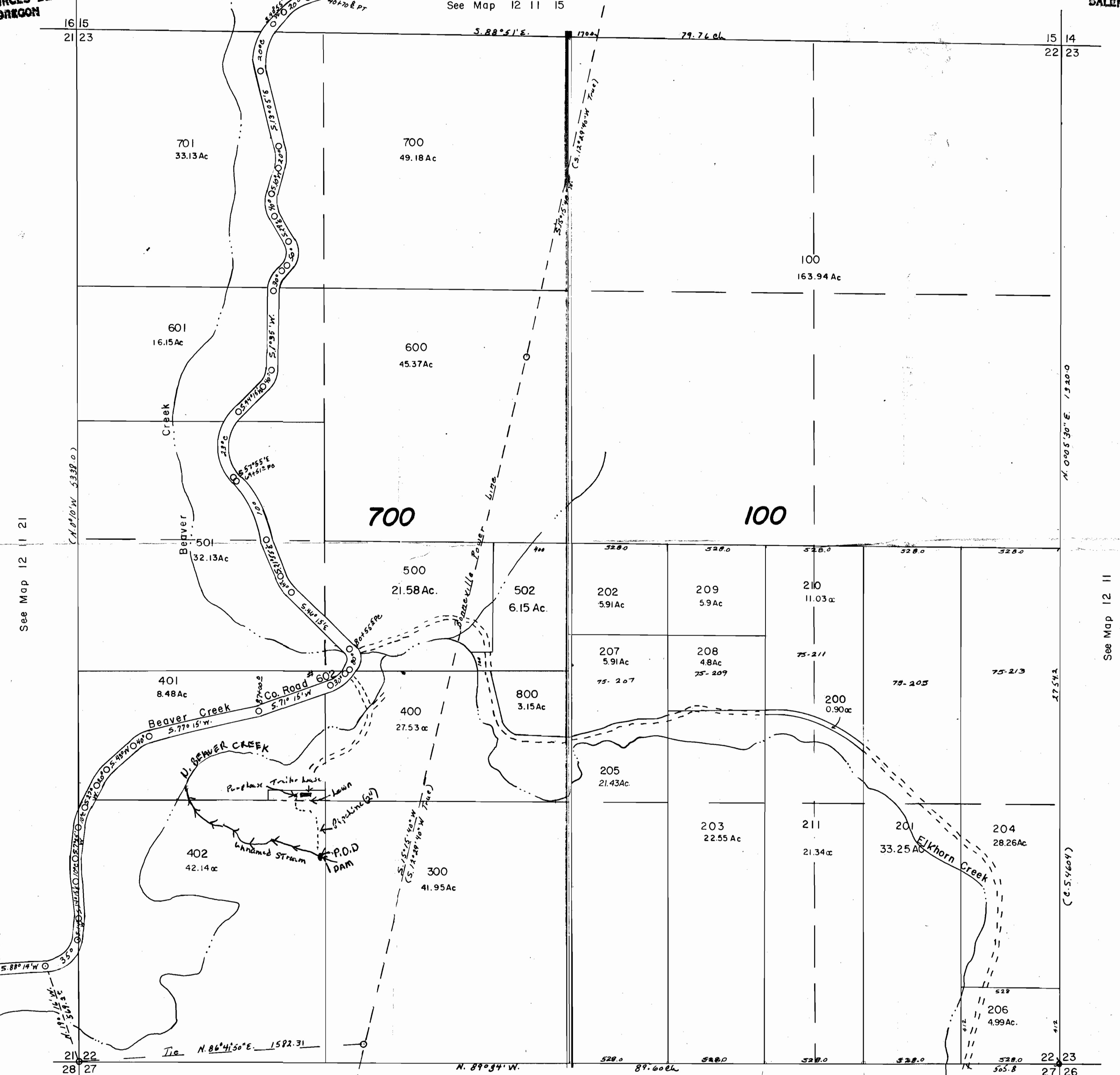
12 11 22

RECEIVED
APR 8 1985
WATER RESOURCES DEPT
SALEM, OREGON

Application No. 68320
Permit No. 49353

RECEIVED
MAY 10 1985
WATER RESOURCES DEPT
SALEM, OREGON

See Map 12 11 15



See Map 12 11 21

See Map 12 11

See Map 12 11

P.O.D. 1100 FT. N. AND 1300 FT. E From SW 1/4 of Section 22



Grid 3016

12 11 22