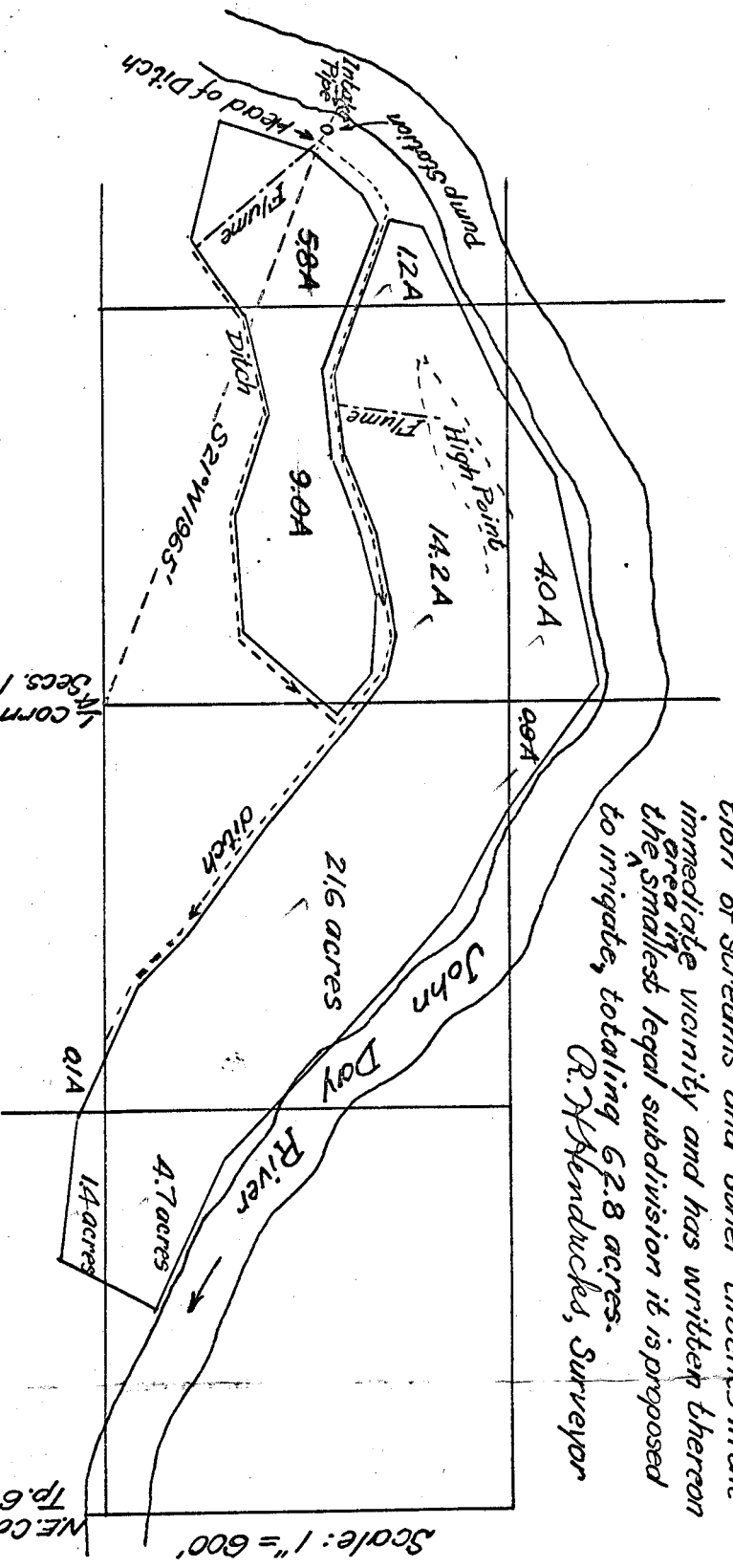


copy

Application No. 6963
Metric No. 4363

I, R.H. Hendricks, of Tossil, Ore, do hereby certify that this map was made from notes taken during an actual survey on Oct 17+18, 1915, and that it correctly represents the works described in the accompanying application together with the location of streams and other ditches in the immediate vicinity and has written thereon the ^{area} ~~small~~ legal subdivision it is proposed to irrigate, totaling 62.8 acres.
R. H. Hendricks, Surveyor



Scale: 1" = 600'
NE. Corner Sec 18
Tp. 68R. 19E. W.M.

Map accompanying application of
Butte Creek Land, Livestock & Lumber Co.,
for permit to appropriate water by pump
from John Day River, in Sec. 18 Tp. 68R. 19E.