

**FINAL PROOF SURVEY**




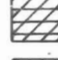


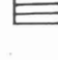


UNDER

Application No's. 8358 , 40660 and 42225  
Permit No's. 6396 , 30290 and 31577**EAGLE POINT IRRIGATION DISTRICT**

SURVEYED BY THE

WATER RESOURCES DEPT., 1979-80

by B.R. SUND  
SCALE 4" = 1 MILE**LEGEND**

-  BIG BUTTE CREEK (PRIMARY)
-  SOUTH FORK REESE CREEK (PRIMARY)
-  BIG BUTTE CREEK (PRIMARY) NORTH FORK REESE CREEK (SUPPLEMENTAL)
-  BIG BUTTE CREEK (PRIMARY) REESE CREEK (SUPPLEMENTAL)
-  HOG CREEK (PRIMARY)
-  BIG BUTTE CREEK (PRIMARY) HOG CREEK (SUPPLEMENTAL)
-  BIG BUTTE CREEK (SUPPLEMENTAL)
-  DITCH
-  PIPELINE

**DESCRIPTION OF DIVERSION POINTS**T.35 S., R.2 E., W.M. (5/5)

DIV. PT. # 1 LOC. - 1130 FT. S. & 700 FT. W. FROM N.E. COR., SEC. 10, N.E.<sup>4</sup>N.E.<sup>4</sup>, SEC. 10. (BIG BUTTE CREEK)  
 DIV. PT. # 2 LOC. - 1030 FT. S. & 290 FT. E. FROM N.W. COR., SEC. 3, N.W.<sup>4</sup>N.W.<sup>4</sup> w/in lot 4, SEC. 3. (BIG BUTTE CREEK)

T.34 S., R.1 E., W.M. (5/5)

DIV. PT. # 3 LOC. - 970 FT. S. & 440 FT. E. FROM CENTER OF SEC. 32, N.W.<sup>4</sup>S.E.<sup>4</sup>, SEC. 32. (SOUTH FORK REESE CREEK)

T.35 S., R.1 E., W.M. (4/5)

DIV. PT. # 4 LOC. - 290 FT. N. & 1120 FT. E. FROM W. 1/4 COR., SEC. 5, S.W.<sup>4</sup>N.W.<sup>4</sup>, SEC. 5. (SOUTH FORK REESE CREEK)

T.35 S., R.1 W., W.M. (1/5)

DIV. PT. # 5 LOC. - 1430 FT. N. & 900 FT. W. FROM S.E. COR., SEC. 1, N.E.<sup>4</sup>S.E.<sup>4</sup>, SEC. 1. (NORTH FORK REESE CREEK)

DIV. PT. # 6 LOC. - 1220 FT. N. & 520 FT. E. FROM W. 1/4 COR., SEC. 12, S.W.<sup>4</sup>N.W.<sup>4</sup>, SEC. 12. (NORTH FORK REESE CREEK)

DIV. PT. # 7 LOC. - 200 FT. S. & 100 FT. E. FROM CENTER OF SEC. 11, N.W.<sup>4</sup>S.E.<sup>4</sup>, SEC. 11. (REESE CREEK)

DIV. PT. # 8 LOC. - 410 FT. S. & 100 FT. E. FROM W. 1/4 COR., SEC. 11, N.W.<sup>4</sup>S.W.<sup>4</sup>, SEC. 11. (REESE CREEK)

DIV. PT. # 9 LOC. - 820 FT. N. & 800 FT. E. FROM S.W. COR., SEC. 10, S.W.<sup>4</sup>S.W.<sup>4</sup>, SEC. 10. (REESE CREEK)

DIV. PT. # 10 LOC. - 450 FT. N. & 150 FT. E. FROM S.W. COR., SEC. 10, S.W.<sup>4</sup>S.W.<sup>4</sup>, SEC. 10. (REESE CREEK)

DIV. PT. # 11 LOC. - 1210 FT. S. & 690 FT. E. FROM CENTER OF SEC. 22, N.W.<sup>4</sup>S.E.<sup>4</sup>, SEC. 22. (HOG CREEK)

DIV. PT. # 12 LOC. - 300 FT. S. & 1160 FT. E. FROM N. 1/4 COR., SEC. 21, N.W.<sup>4</sup>N.E.<sup>4</sup>, SEC. 21. (HOG CREEK)

DIV. PT. # 13 LOC. - 1100 FT. S. & 70 FT. W. FROM N. 1/4 COR., SEC. 21, N.E.<sup>4</sup>N.W.<sup>4</sup>, SEC. 21. (HOG CREEK)

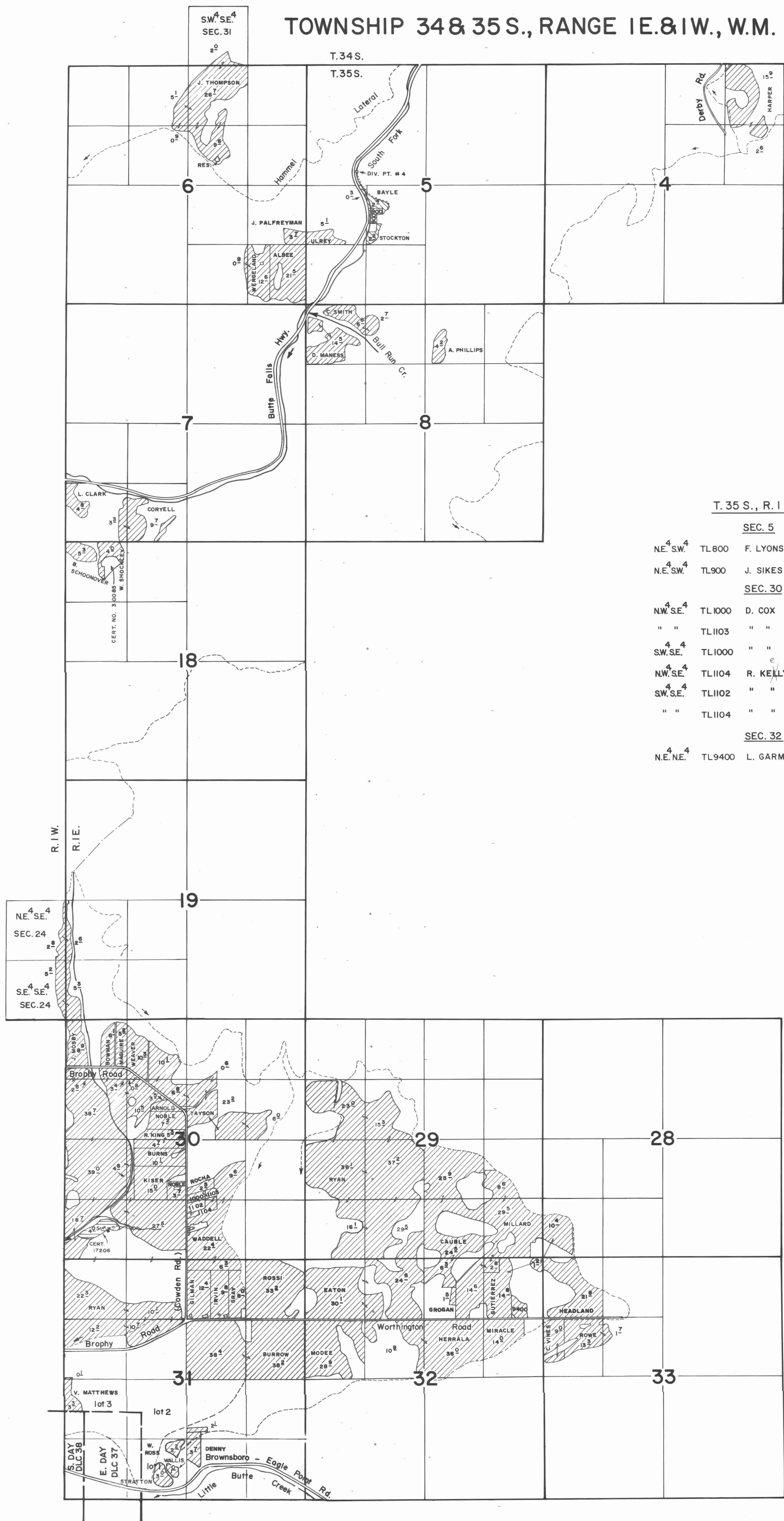
DIV. PT. # 14 LOC. - 570 FT. S. & 520 FT. E. FROM W. 1/4 COR., SEC. 21, N.W.<sup>4</sup>S.W.<sup>4</sup>, SEC. 21. (HOG CREEK)

DIV. PT. # 15 LOC. - 530 FT. S. & 700 FT. E. FROM W. 1/4 COR., SEC. 21, N.W.<sup>4</sup>S.W.<sup>4</sup>, SEC. 21. (HOG CREEK)

T.34 S., R.1 E., W.M. (5/5)

DIV. PT. # 16 LOC. - 350 FT. N. & 1280 FT. W. FROM E. 1/4 COR., SEC. 34, N.E.<sup>4</sup>S.E.<sup>4</sup>, SEC. 34. (QUART CREEK)

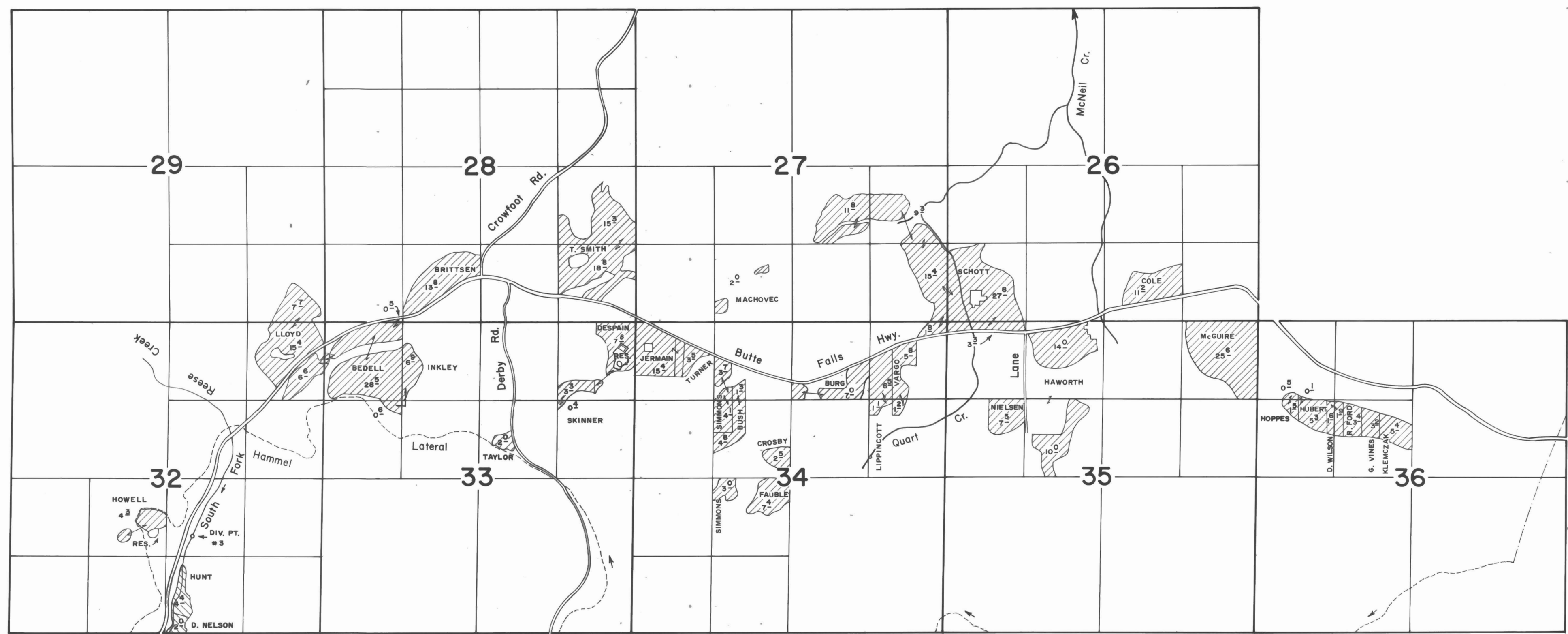
TOWNSHIP 34 & 35 S., RANGE 1E. & 1W., W.M.



T. 35 S., R. 1 E., W. M.

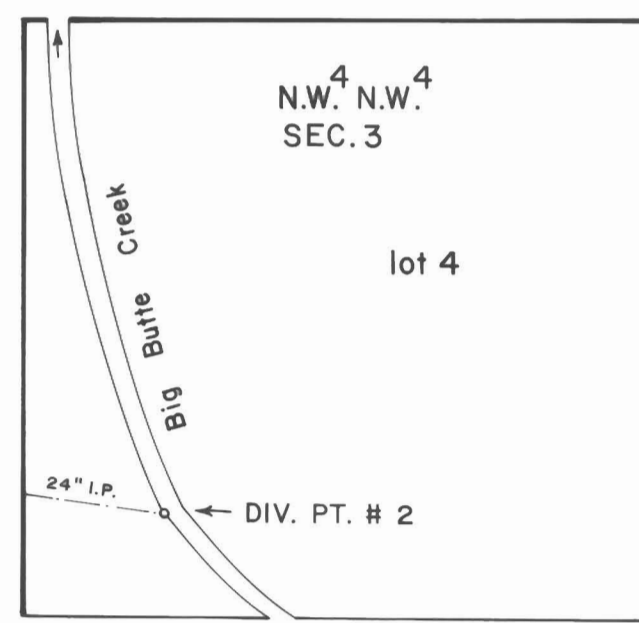
SEC. 5			
NE. 1/4 SW. 1/4	TL800	F. LYONS	0 <sup>7</sup>
N.E. SW. 1/4	TL900	J. SIKES	0 <sup>9</sup>
SEC. 30			
NW. SE. 1/4	TL1000	D. COX	1 <sup>1</sup>
" "	TL1103	" "	1 <sup>1</sup>
SW. SE. 1/4	TL1000	" "	0 <sup>4</sup>
NW. SE. 1/4	TL1104	R. KELLY	0 <sup>3</sup>
SW. SE. 1/4	TL1102	" "	1 <sup>7</sup>
" "	TL1104	" "	2 <sup>4</sup>
SEC. 32			
NE. NE. 1/4	TL9400	L. GARMAN	2 <sup>8</sup>

TOWNSHIP 34 SOUTH, RANGE I EAST, W.M.

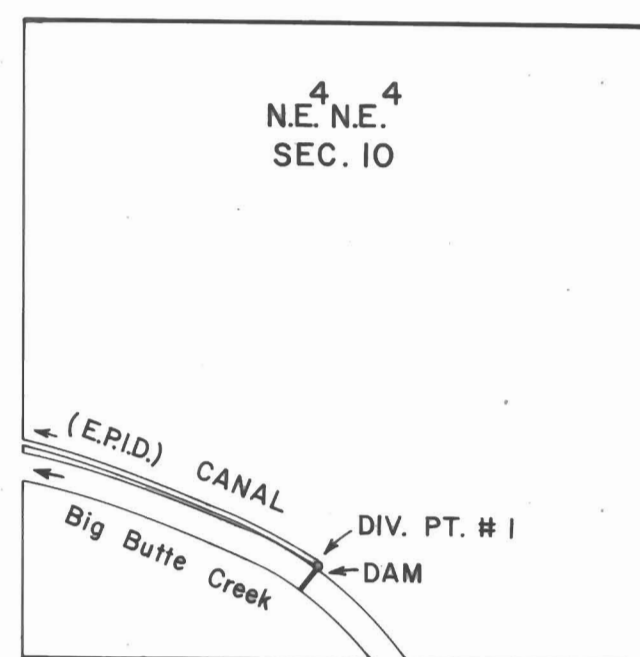


TOWNSHIP 34 SOUTH, RANGE I WEST, W.M.

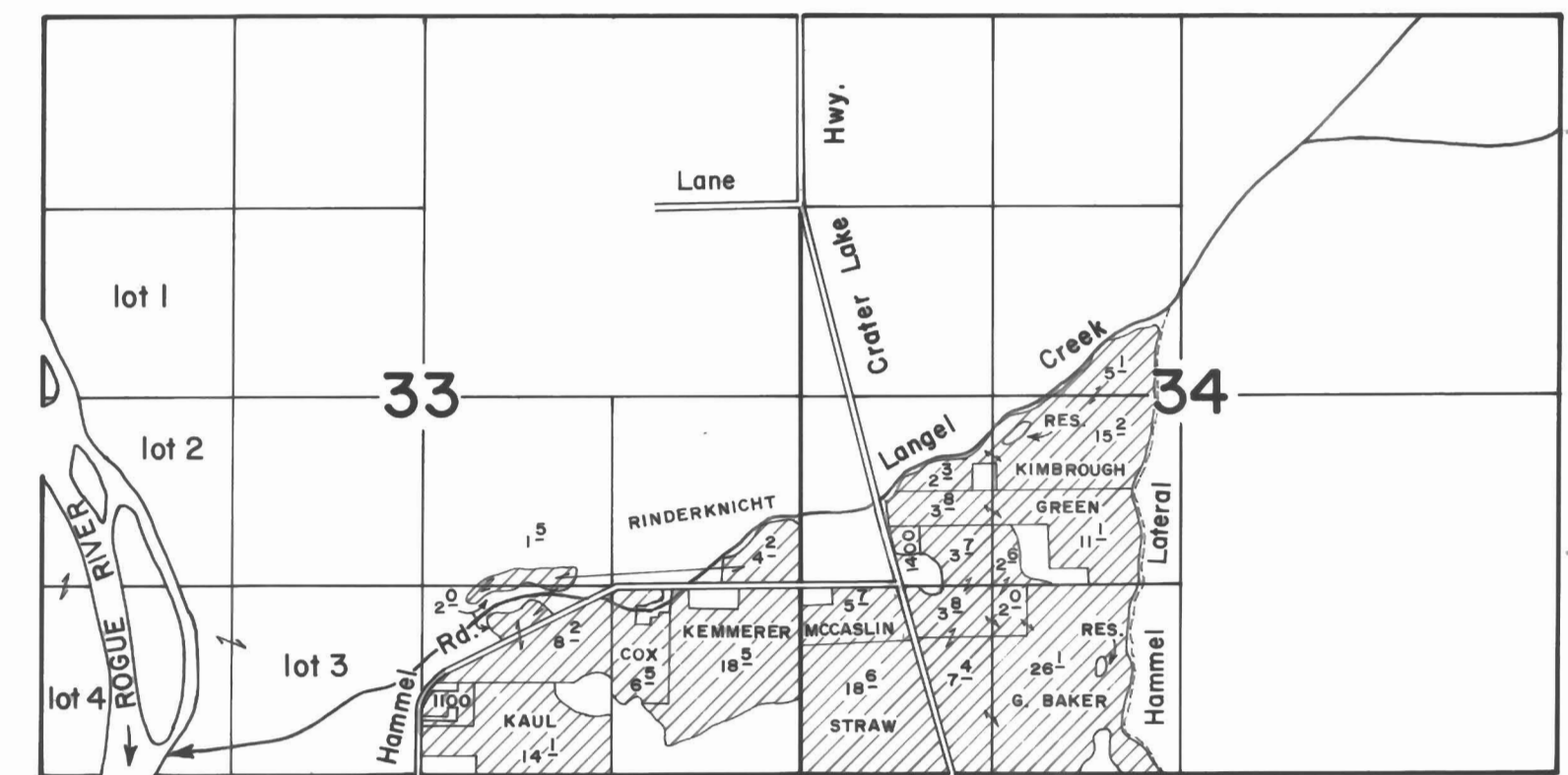
TOWNSHIP 35 SOUTH, RANGE 2 EAST, W.M.



SCALE: 1" = 400 FT.



SCALE: 1" = 400 FT.



T. 34 S., R. 1 W., W.M.

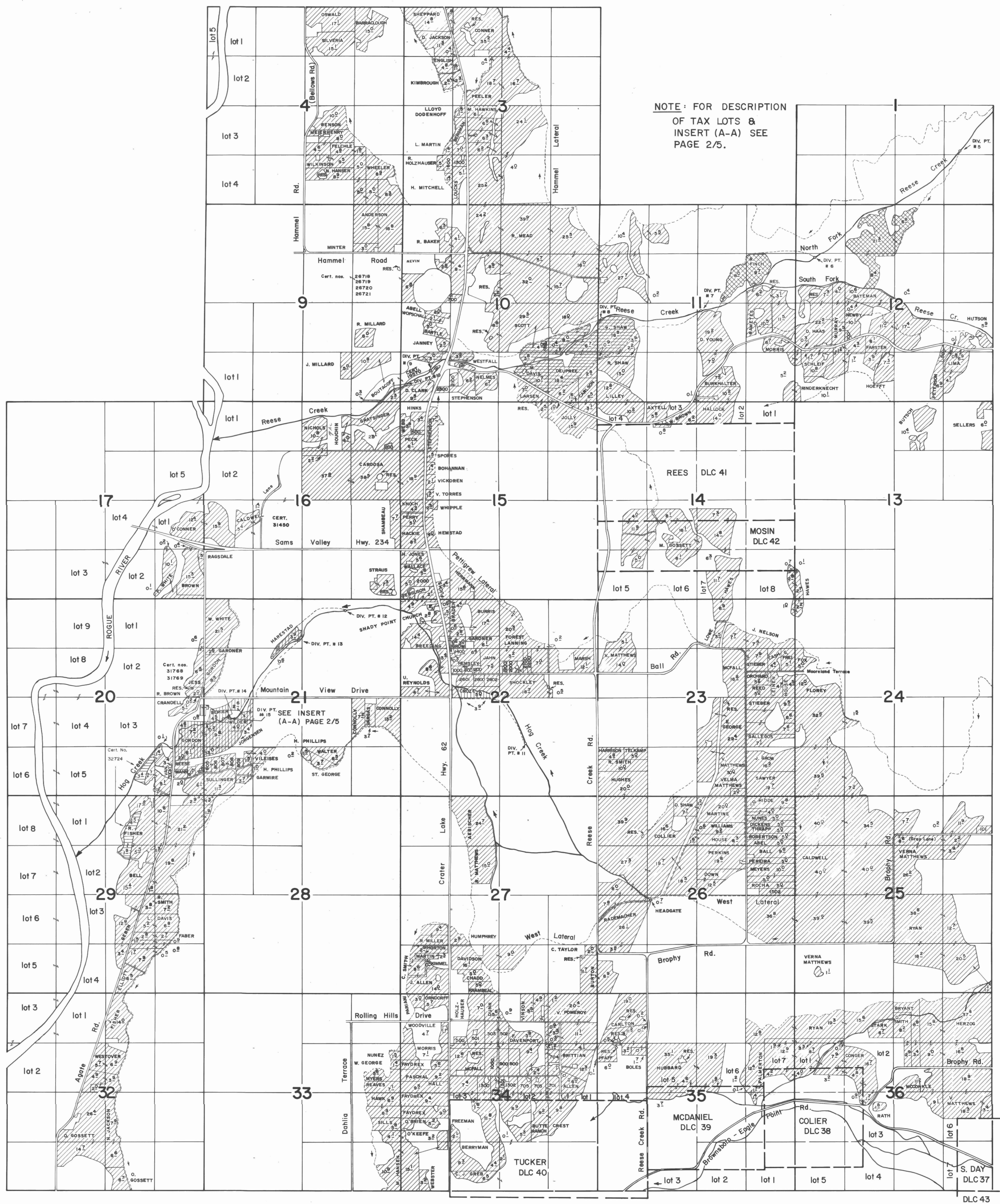
SEC. 33

SW 1/4 SE 1/4 TL 1100 J. WESTFALL 15

SEC. 34

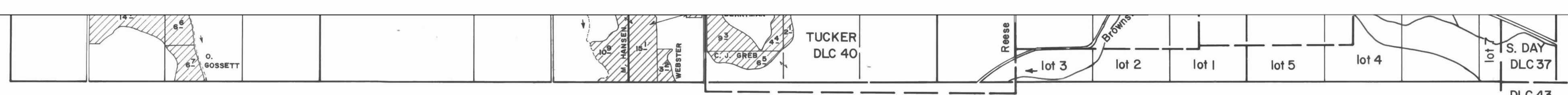
NW 1/4 SW 1/4 TL 1400 W. KNIGHTEN 07

TOWNSHIP 35 SOUTH, RANGE I WEST, W.M.



NOTE: FOR DESCRIPTION OF TAX LOTS & INSERT (A-A) SEE PAGE 2/5.

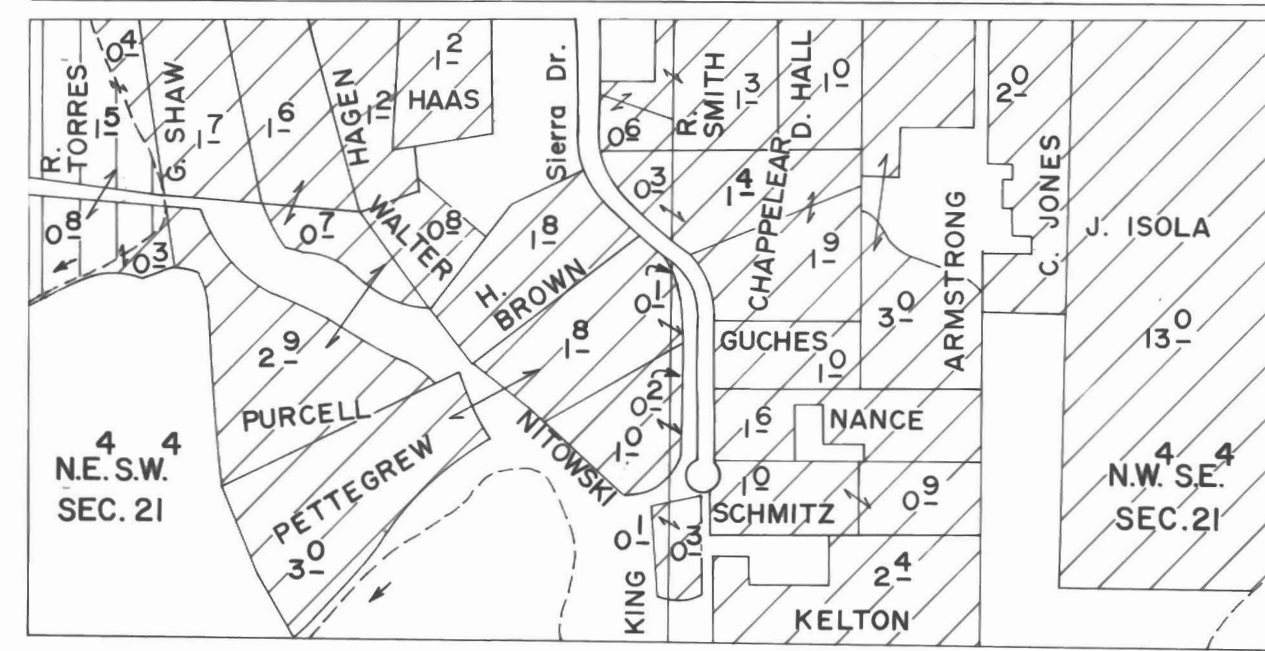
SEE INSERT (A-A) PAGE 2/5



TOWNSHIP 35 SOUTH, RANGE 1 WEST, W.M.

INSERT (A-A)

Mountain View Dr.



SCALE: 1" = 400 FT.

SEC. 3

SW<sup>4</sup>.SW<sup>4</sup> TL 1600 R. STORM 3<sup>0</sup>  
SE<sup>4</sup>.SW<sup>4</sup> TL 1300 J. MITCHELL 2<sup>4</sup>

SEC. 10

SW<sup>4</sup>.NW<sup>4</sup> TL 700 L. DODENHOFF 0<sup>5</sup>  
SE<sup>4</sup>.NW<sup>4</sup> " " " 1<sup>5</sup>  
SW<sup>4</sup>.SW<sup>4</sup> TL 2300 H. HENRY 1<sup>4</sup>  
SE<sup>4</sup>.SW<sup>4</sup> TL 2100 C. CLAYTON 1<sup>2</sup>

SEC. 12

NE<sup>4</sup>.SW<sup>4</sup> TL 100 B. PEMBERTON 1<sup>0</sup>  
NE<sup>4</sup>.SE<sup>4</sup> TL 602 S. KEE 0<sup>8</sup>  
NW<sup>4</sup>.SE<sup>4</sup> " " " 0<sup>1</sup>  
SW<sup>4</sup>.SE<sup>4</sup> " " " 0<sup>8</sup>  
SE<sup>4</sup>.SE<sup>4</sup> " " " 0<sup>8</sup>

SEC. 15

NW<sup>4</sup>.NW<sup>4</sup> TL 500 V. BRIGHT 0<sup>8</sup>  
SW<sup>4</sup>.SW<sup>4</sup> TL 2000 H. LAPOLLA 3<sup>0</sup>

SEC. 16

NE<sup>4</sup>.NE<sup>4</sup> TL 200 L. BRADSHAW 1<sup>0</sup>

SEC. 20

SE<sup>4</sup>.SE<sup>4</sup> TL 803 H. SARGENT 1<sup>0</sup>  
SE<sup>4</sup>.SE<sup>4</sup> TL 804 A. YOUNG 1<sup>0</sup>

SEC. 21

SW<sup>4</sup>.SW<sup>4</sup> TL 805 & 806 J. BRIDGERS 4<sup>0</sup>  
SW<sup>4</sup>.SW<sup>4</sup> TL 807 & 808 R. VINZANT 4<sup>0</sup>  
SW<sup>4</sup>.SW<sup>4</sup> TL 809 G. SCHWAB 1<sup>0</sup>

SEC. 22

SW<sup>4</sup>.NE<sup>4</sup> TL 1900 R. CALLAGAN 1<sup>0</sup>  
SW<sup>4</sup>.NE<sup>4</sup> TL 2000 FRANK LANNING 2<sup>8</sup>  
SW<sup>4</sup>.NE<sup>4</sup> TL 2100 W. WEBBER 1<sup>5</sup>  
SW<sup>4</sup>.NE<sup>4</sup> TL 2200 J. YATES 1<sup>5</sup>  
SE<sup>4</sup>.NW<sup>4</sup> TL 1400 M. CURTIS 1<sup>0</sup>  
SE<sup>4</sup>.NW<sup>4</sup> TL 1000 & 1100 J. MARTINSON 2<sup>0</sup>  
SE<sup>4</sup>.NW<sup>4</sup> TL 1200 W. D. HAWKINS 0<sup>5</sup>  
SE<sup>4</sup>.NW<sup>4</sup> TL 2601 W. HARTLERODE 3<sup>4</sup>  
SE<sup>4</sup>.NW<sup>4</sup> TL 2600 E. KOCH 2<sup>4</sup>  
SE<sup>4</sup>.NW<sup>4</sup> TL 2602 S. TOWNE 3<sup>0</sup>

SEC. 25

NE<sup>4</sup>.NE<sup>4</sup> TL 101 N. KUYPER 2<sup>0</sup>

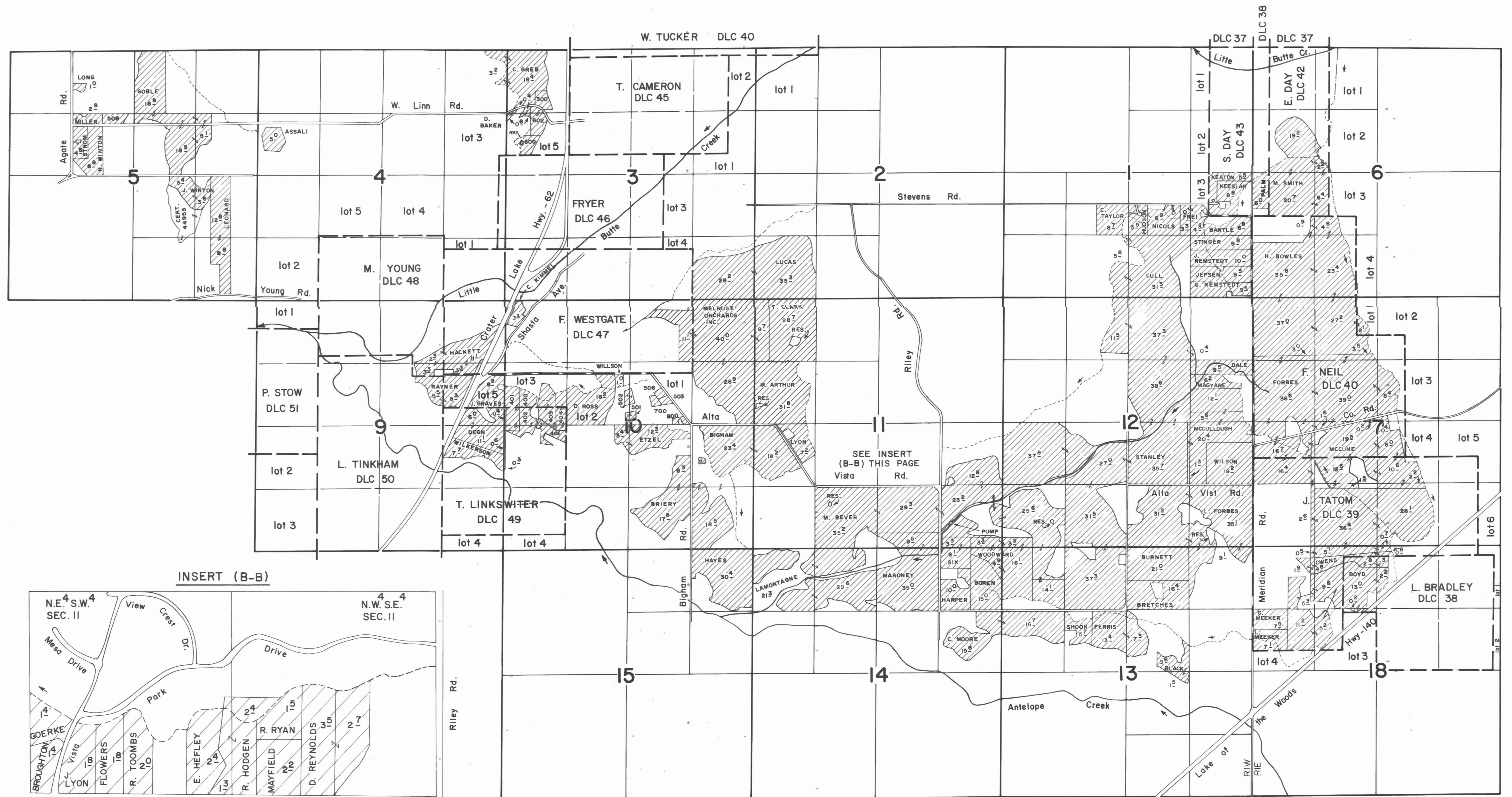
SEC. 26

SE<sup>4</sup>.NE<sup>4</sup> TL 1502 E. ECCLESTON 4<sup>0</sup>

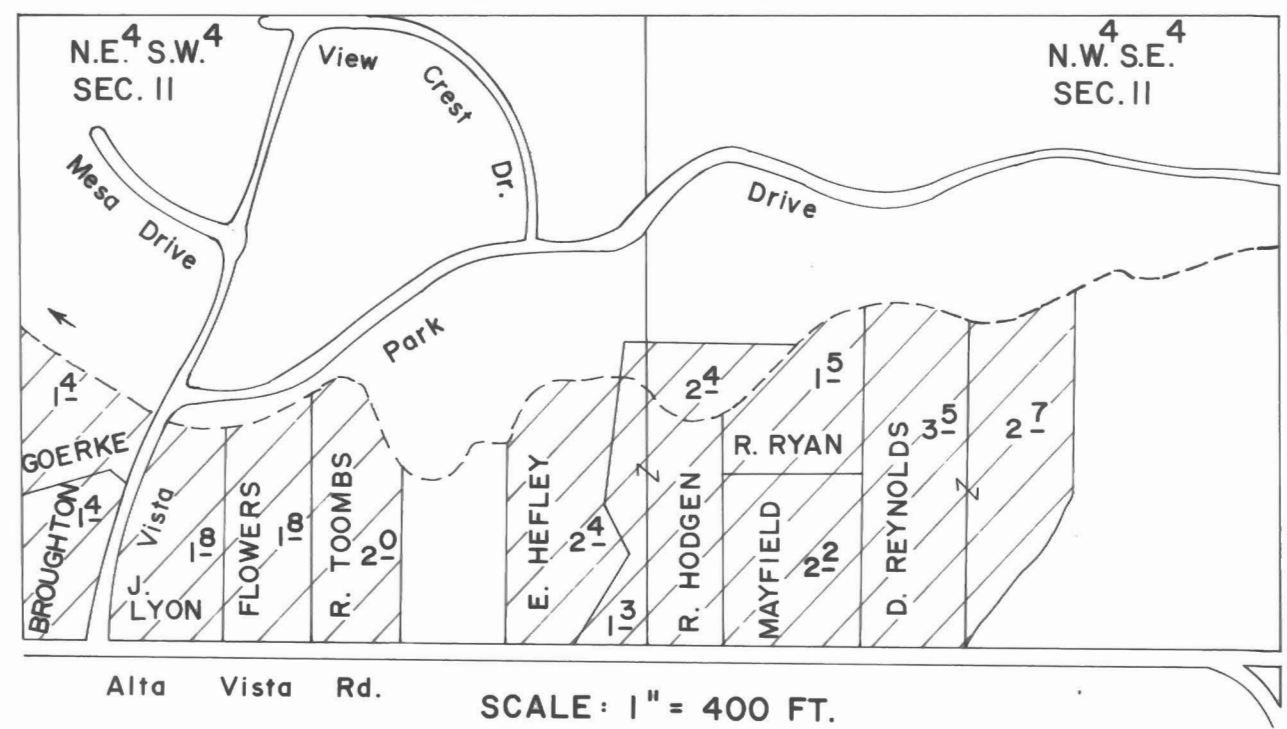
SEC. 34

NW<sup>4</sup>.NE<sup>4</sup> TL 502 M. CHADD 3<sup>3</sup>  
SW<sup>4</sup>.NE<sup>4</sup> " " " 1<sup>1</sup>  
NE<sup>4</sup>.NW<sup>4</sup> " " " 0<sup>4</sup>  
SE<sup>4</sup>.NW<sup>4</sup> " " " 0<sup>2</sup>  
SW<sup>4</sup>.NE<sup>4</sup> TL 800 W. JACKSON 5<sup>0</sup>  
SW<sup>4</sup>.NE<sup>4</sup> TL 900 J. LEWIS 4<sup>2</sup>  
SE<sup>4</sup>.NW<sup>4</sup> " " " 0<sup>8</sup>  
SW<sup>4</sup>.NE<sup>4</sup> TL 703 E. LAVENER 3<sup>3</sup>  
NW<sup>4</sup>.SE<sup>4</sup> w/in lot 2 TL 703 E. LAVENER 1<sup>6</sup>  
SW<sup>4</sup>.NE<sup>4</sup> TL 705 D. FORD 3<sup>4</sup>  
NW<sup>4</sup>.SE<sup>4</sup> w/in lot 2 TL 705 D. FORD 1<sup>5</sup>  
SW<sup>4</sup>.NE<sup>4</sup> TL 1302 K. TRAUTMAN 3<sup>2</sup>  
NW<sup>4</sup>.SE<sup>4</sup> w/in lot 2 TL 1302 K. TRAUTMAN 1<sup>5</sup>  
SW<sup>4</sup>.NE<sup>4</sup> TL 1301 A. PETERSEN 1<sup>4</sup>  
SE<sup>4</sup>.NW<sup>4</sup> " " " 1<sup>6</sup>  
NE<sup>4</sup>.SW<sup>4</sup> w/in lot 3 TL 1301 A. PETERSEN 0<sup>9</sup>  
NW<sup>4</sup>.SE<sup>4</sup> w/in lot 2 " " " 0<sup>6</sup>  
SW<sup>4</sup>.NE<sup>4</sup> TL 701 J. BRYAN 0<sup>8</sup>  
SE<sup>4</sup>.NE<sup>4</sup> " " " 2<sup>8</sup>  
NE<sup>4</sup>.SE<sup>4</sup> w/in lot 1 TL 701 J. BRYAN 1<sup>2</sup>  
NW<sup>4</sup>.SE<sup>4</sup> w/in lot 2 " " " 0<sup>3</sup>  
SW<sup>4</sup>.NE<sup>4</sup> TL 704 R. AYERS 1<sup>2</sup>  
SE<sup>4</sup>.NE<sup>4</sup> " " " 4<sup>0</sup>  
NE<sup>4</sup>.NW<sup>4</sup> TL 500 V. POMEROY 1<sup>1</sup>  
SE<sup>4</sup>.NW<sup>4</sup> " " " 1<sup>6</sup>  
NE<sup>4</sup>.NW<sup>4</sup> TL 501 V. MCCREADY 5<sup>2</sup>  
SE<sup>4</sup>.NW<sup>4</sup> " " " 1<sup>7</sup>  
NE<sup>4</sup>.NW<sup>4</sup> TL 503 E. WARNER 3<sup>6</sup>  
SE<sup>4</sup>.NW<sup>4</sup> " " " 1<sup>4</sup>  
SE<sup>4</sup>.NW<sup>4</sup> TL 1000 E. NORTHROP 5<sup>0</sup>  
SE<sup>4</sup>.NW<sup>4</sup> TL 1300 P. NORTHROP 3<sup>0</sup>  
NE<sup>4</sup>.SW<sup>4</sup> w/in lot 3 TL 1300 P. NORTHROP 1<sup>5</sup>

TOWNSHIP 36 SOUTH, RANGE 1 EAST & 1 WEST, W.M.



INSERT (B-B)



SCALE: 1" = 400 FT.

T.36 S., R.1 W., W.M.

SEC. 3

NW. 1/4 TL 300 J. MCGUIRE 2<sup>0</sup>  
 NW. 1/4 TL 602 R. PALM 0<sup>9</sup>  
 SW. 1/4 w/in lot 5 TL 602 R. PALM 3<sup>5</sup>  
 SW. 1/4 w/in lot 5 TL 600 C. HENSON 3<sup>4</sup>

SEC. 5

SE. 1/4 TL 508 J. SHELTON 2<sup>3</sup>

SEC. 10

SW. 1/4 w/in lot 1 TL 502 C. CHRISTAIN 0<sup>5</sup>  
 SE. 1/4 " lot 2 " " " 0<sup>8</sup>  
 SW. 1/4 w/in lot 1 TL 501 J. GREB 0<sup>6</sup>  
 SE. 1/4 " lot 2 " " " 0<sup>4</sup>  
 SW. 1/4 w/in lot 1 TL 503 W. HUTCHINSON 0<sup>9</sup>  
 SW. 1/4 w/in lot 1 TL 506 E. HAMILTON 0<sup>9</sup>  
 SW. 1/4 w/in lot 1 TL 700 E. KELLER 0<sup>9</sup>  
 SW. 1/4 w/in lot 1 TL 800 B. HEFLEY 1<sup>0</sup>

SEC. 10

SW. 1/4 w/in lot 3 TL 400 R. MILLER 2<sup>9</sup>  
 SW. 1/4 w/in lot 3 TL 401 G. FORAN 3<sup>6</sup>  
 SW. 1/4 w/in T. LINKSWITER DLC 49 TL 401 G. FORAN 2<sup>4</sup>  
 NW. 1/4 " " " " " " 0<sup>8</sup>  
 SW. 1/4 w/in T. LINKSWITER DLC 49 TL 402 A. SCHENFISCH 2<sup>5</sup>  
 NW. 1/4 " " " " " " 1<sup>8</sup>  
 SW. 1/4 w/in lot 3 TL 403 R. LEWIS 3<sup>4</sup>  
 SW. 1/4 w/in T. LINKSWITER DLC 49 TL 403 R. LEWIS 3<sup>0</sup>  
 NW. 1/4 " " " " " " 0<sup>2</sup>  
 SW. 1/4 w/in lot 3 TL 404 M. THOMSON 1<sup>7</sup>  
 SW. 1/4 w/in T. LINKSWITER DLC 49 TL 404 M. THOMSON 2<sup>3</sup>  
 NW. 1/4 " " " " " " 0<sup>6</sup>  
 SW. 1/4 w/in T. LINKSWITER DLC 49 TL 405 W. HOLMES 0<sup>4</sup>  
 NW. 1/4 " " " " " " 3<sup>0</sup>