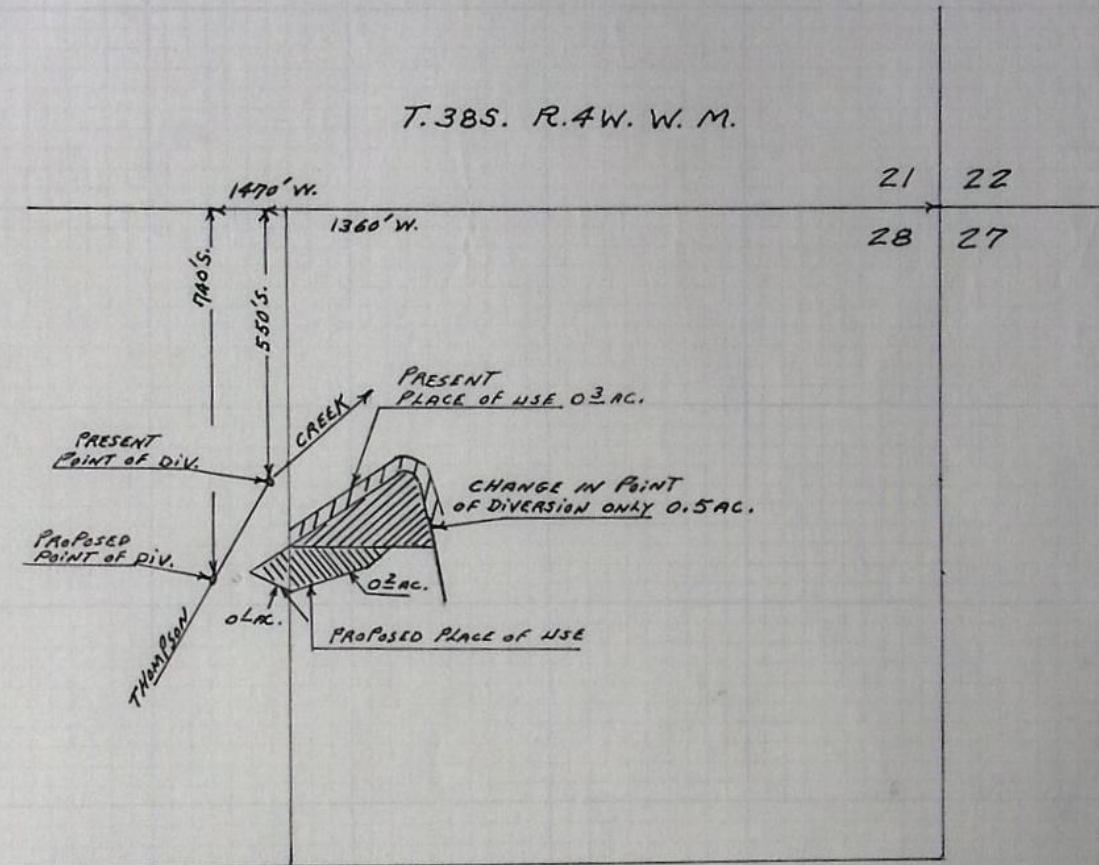


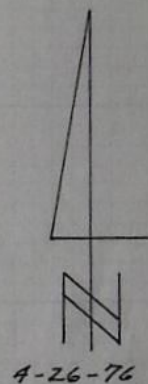
T. 38S. R. 4W. W. M.



MAP TO ACCOMPANY APPLICATION OF
JOHN E. AND MAXINE E. DE YOUNG FOR
CHANGE IN POINT OF DIVERSION AND CHANGE
IN PLACE OF USE

SCALE 1" = 400'

RECEIVED
MAY - 31 1976
WATER RESOURCES DEPT.
SALEM, OREGON



T-3403