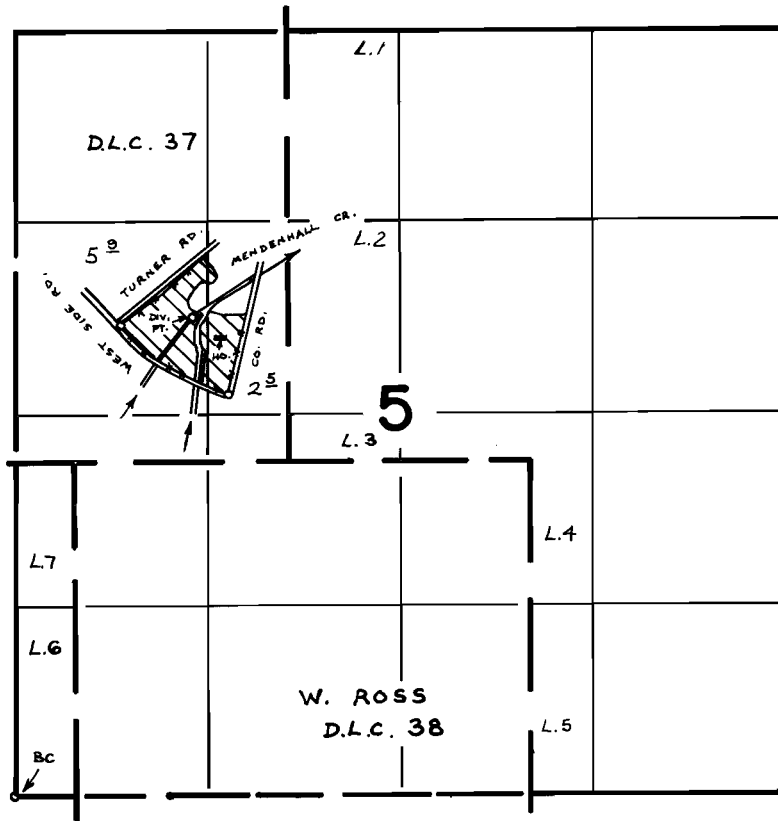


T. 40 S., R. 8 W., W.M.



DIV. PT. LOC. - 670' N. & 1220' E. FROM W. 1/4 COR., SEC. 5.

**FINAL PROOF SURVEY**  
UNDER

Application No. 50309 Permit No. 37379  
IN NAME OF

ORVAL L. SEAT

Surveyed AUG. 8 1978, by B. SUND

D.H.M.  
P.T.S. - 1978 - 14 - C