

STATE ENGINEER
RECEIVED

JUL 5 1923

SALEM, OREGON

0
2
0

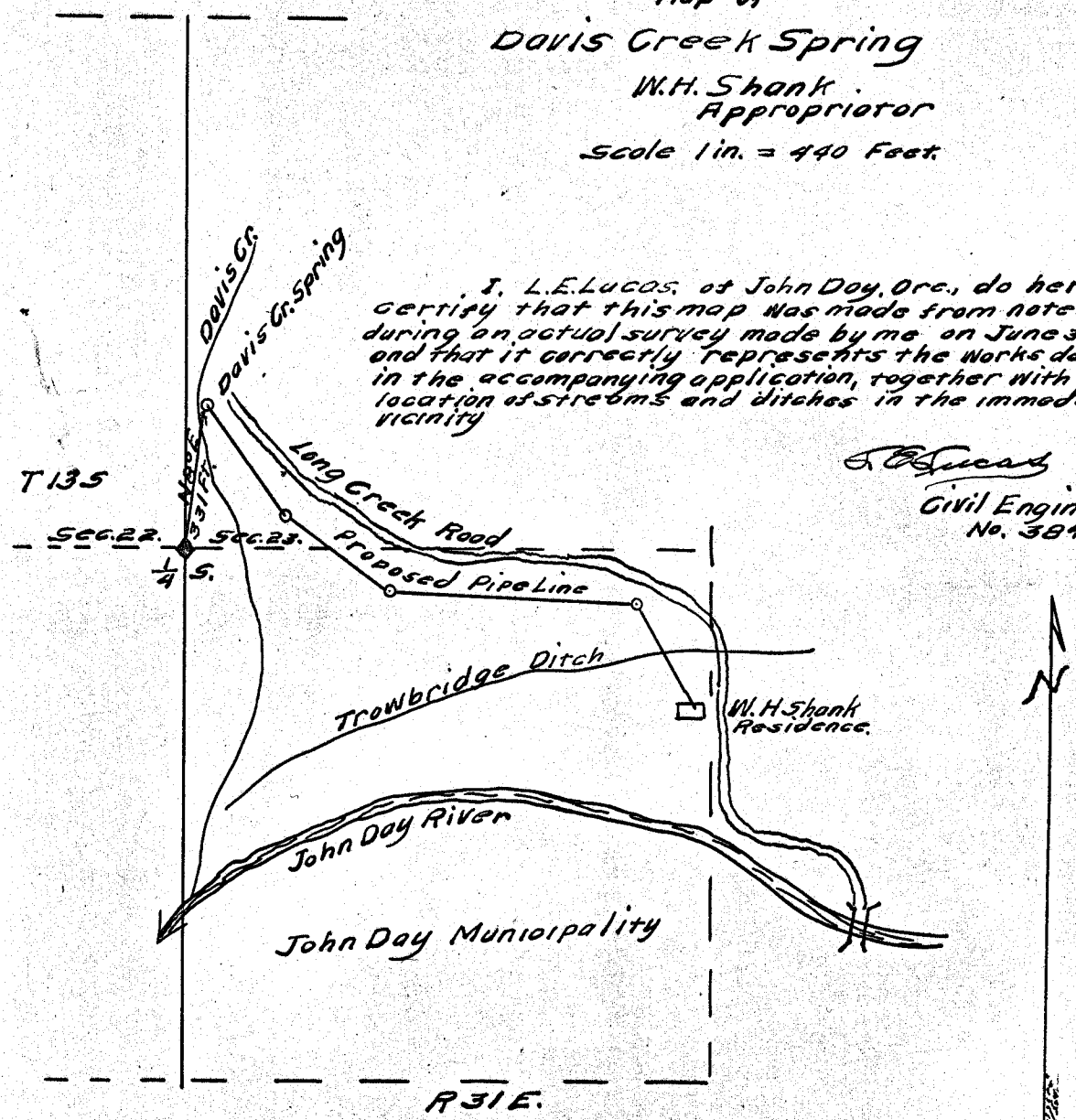
Map of
Davis Creek Spring

W.H. Shank
Appropriator

Scale 1 in. = 440 Feet

I, L.E. Lucas, of John Day, Ore., do hereby certify that this map was made from notes taken during an actual survey made by me on June 30, 1923, and that it correctly represents the works described in the accompanying application, together with the location of streams and ditches in the immediate vicinity

L.E. Lucas
Civil Engineer
No. 384.



Application No. 9060
Permit No. 5953

do 90