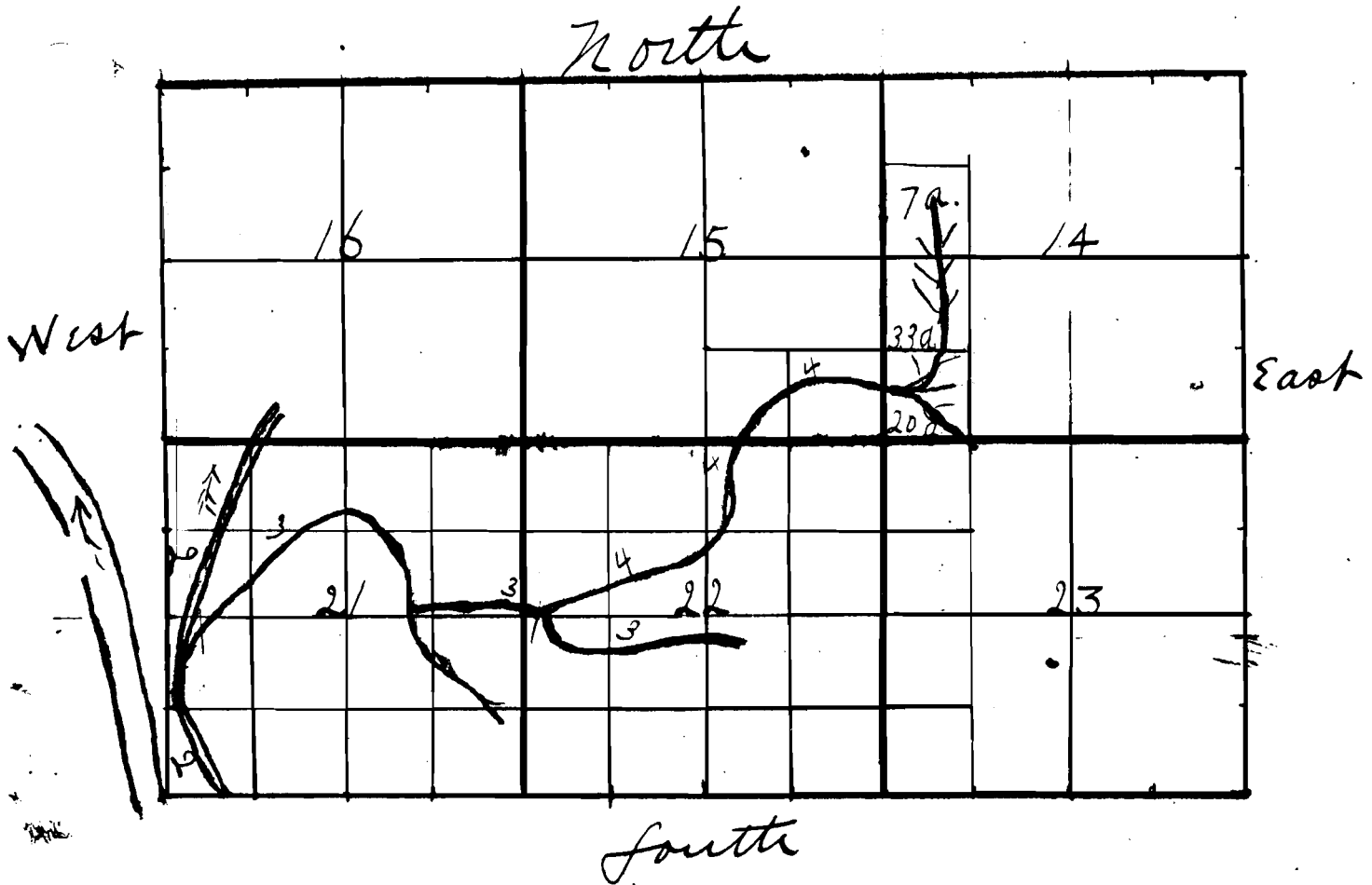


OFFICE OF STATE ENGINEER
RECEIVED
APR 5 1911
SALEM, OREGON

Application No. 1336
Enlargement Permit No. 93

Township 17 South of Range 12. East, Willamette Meridian.



LEGEND. Scale, 2 in. per mile.

- .1. Deschutes River.
- .2. Main Canal of Deschutes Reclamation & Irrigation Company.
- .3. Kutzman Lateral of D.R. & I. Co. main canal.
- .4. L.C. Young branch of Kutzman Lateral.