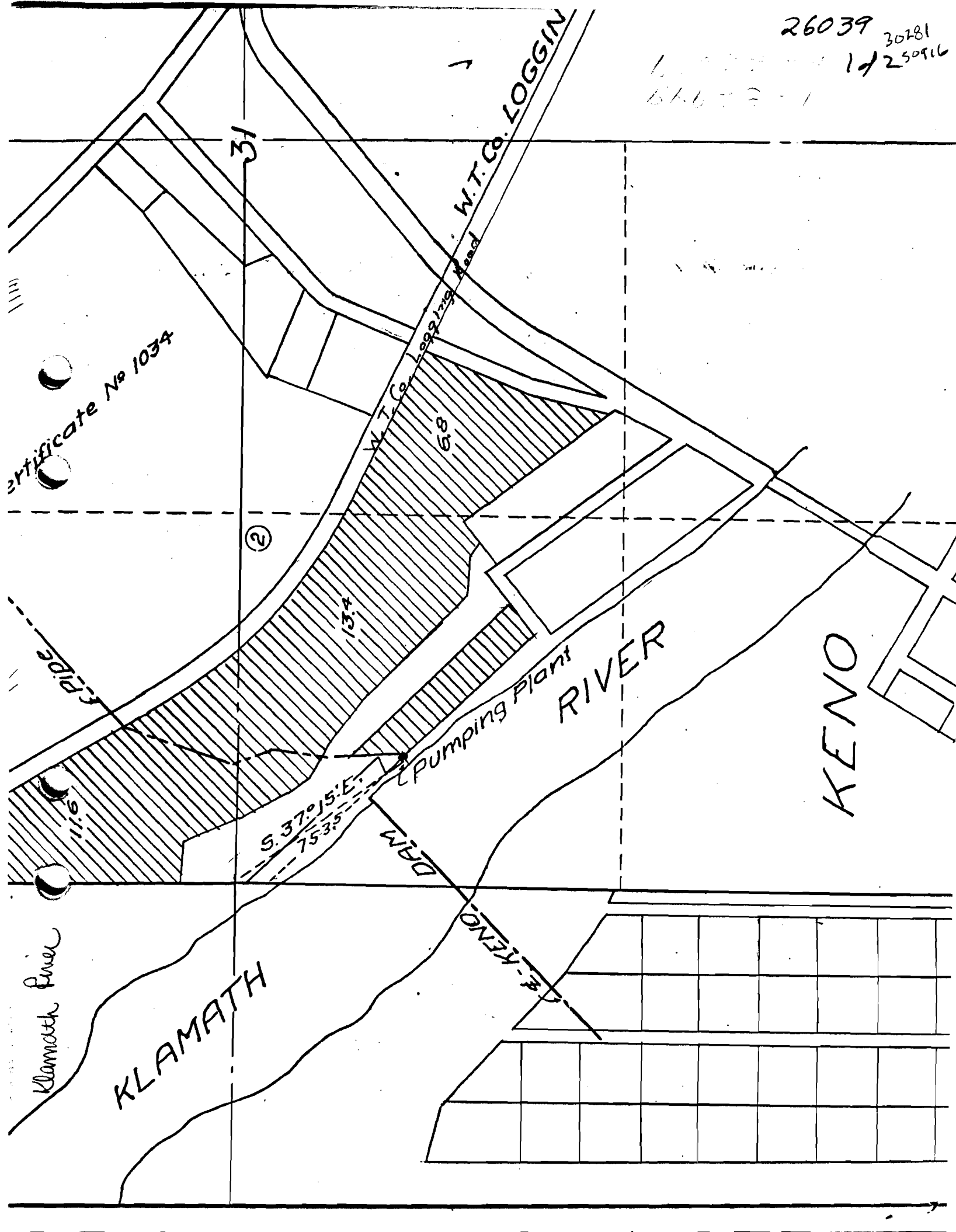


26039 30781  
17250916



Certificate No 1034

31

W.T. CO. LOGGIN

W.T. Co. Road

6.8

13.4

111.6

S. 37°15'E  
75°35'

DAM

PUMPING PLANT

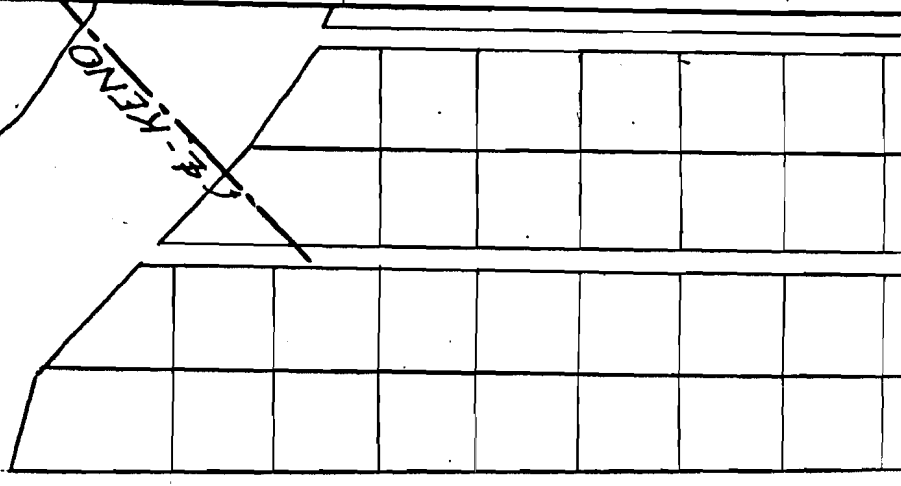
RIVER

KENO

Klamath River

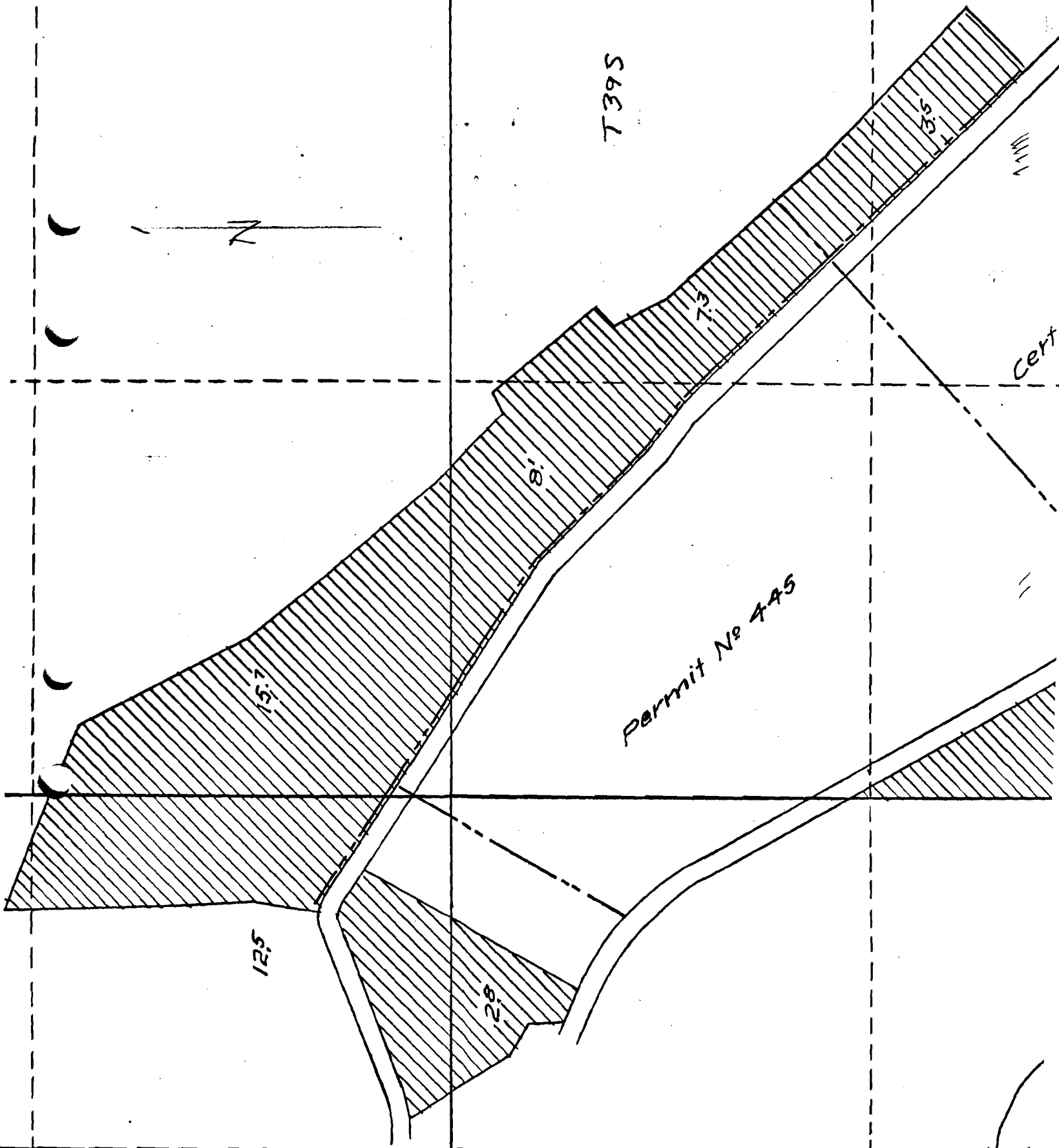
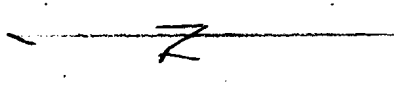
KLAMATH

D. KENO



26039  
2/2

T395



cert

Permit No 445

12.5'

15.7'

8'

7.3'

3.5'

2.8'