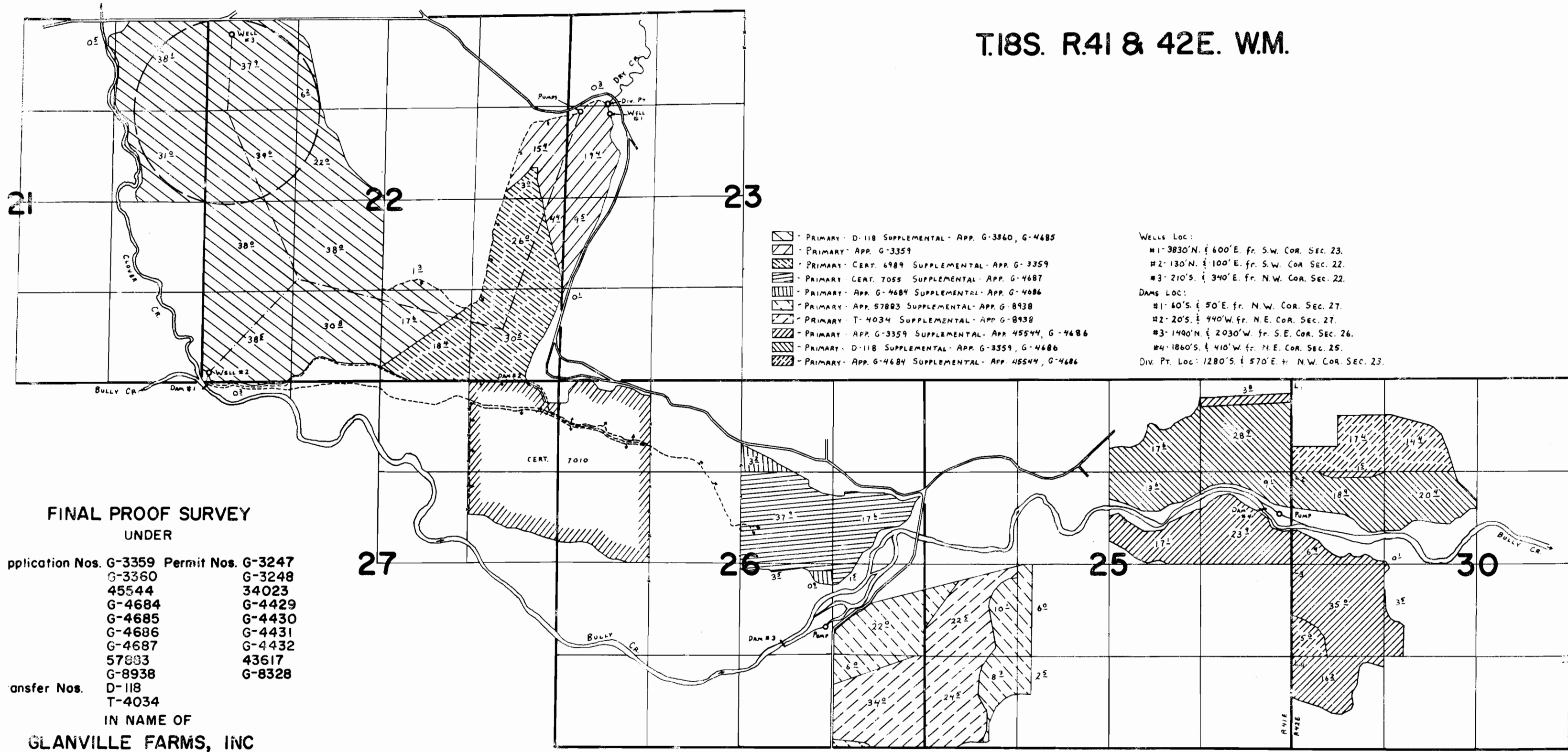


T.18S. R.41 & 42E. W.M.



- ▨ - PRIMARY - D-118 SUPPLEMENTAL - APP. G-3360, G-4685
- ▨ - PRIMARY - APP. G-3359
- ▨ - PRIMARY - CERT. 6989 SUPPLEMENTAL - APP. G-3359
- ▨ - PRIMARY - CERT. 7055 SUPPLEMENTAL - APP. G-4687
- ▨ - PRIMARY - APP. G-4684 SUPPLEMENTAL - APP. G-4686
- ▨ - PRIMARY - APP. 57803 SUPPLEMENTAL - APP. G-8938
- ▨ - PRIMARY - T-4034 SUPPLEMENTAL - APP. G-8938
- ▨ - PRIMARY - APP. G-3359 SUPPLEMENTAL - APP. 45544, G-4686
- ▨ - PRIMARY - D-118 SUPPLEMENTAL - APP. G-3359, G-4686
- ▨ - PRIMARY - APP. G-4684 SUPPLEMENTAL - APP. 45544, G-4686

WELLS LOC:  
 #1- 3830' N. & 600' E. fr. S.W. COR. SEC. 23.  
 #2- 130' N. & 100' E. fr. S.W. COR. SEC. 22.  
 #3- 210' S. & 340' E. fr. N.W. COR. SEC. 22.

DAMS LOC:  
 #1- 60' S. & 50' E. fr. N.W. COR. SEC. 27.  
 #2- 20' S. & 440' W. fr. N.E. COR. SEC. 27.  
 #3- 1490' N. & 2030' W. fr. S.E. COR. SEC. 26.  
 #4- 1860' S. & 410' W. fr. N.E. COR. SEC. 25.

Div. Pt. Loc: 1280' S. & 570' E. fr. N.W. COR. SEC. 23.

**FINAL PROOF SURVEY**  
 UNDER

Application Nos. G-3359	Permit Nos. G-3247
G-3360	G-3248
45544	34023
G-4684	G-4429
G-4685	G-4430
G-4686	G-4431
G-4687	G-4432
57883	43617
G-8938	G-8328

Transfer Nos. D-118  
 T-4034

IN NAME OF  
**GLANVILLE FARMS, INC**

Surveyed July 31, 1979, by C. L. HUGHES