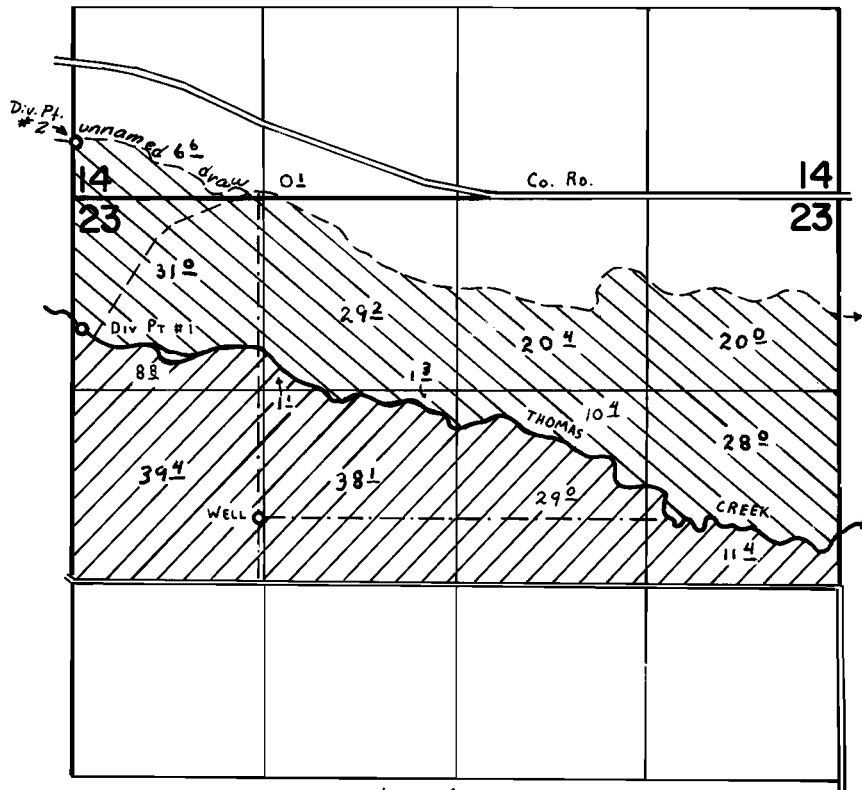


# T38S. R19E. WM.



DIV. PTS. LOC: #1 - 900' S. & 60' E.  
 #2 - 380' N. & 20' E. } ALL FROM NW. COR. SEC. 23.  
 WELL LOC: 2200' S. & 1280' E.

▨ - PRIMARY IRRIGATION FROM CREEK & DITCH (49835); SUPPLEMENTAL IRRIGATION FROM WELL (G-7581)  
 ▩ - PRIMARY IRRIGATION FROM WELL (G-7581)

## FINAL PROOF SURVEY UNDER

Application No. G-7581 49835 Permit No. G-7138 37149  
 IN NAME OF

MCDONALD LIVESTOCK COMPANY

Surveyed JUNE 26 1978, by C. L. HUGHES