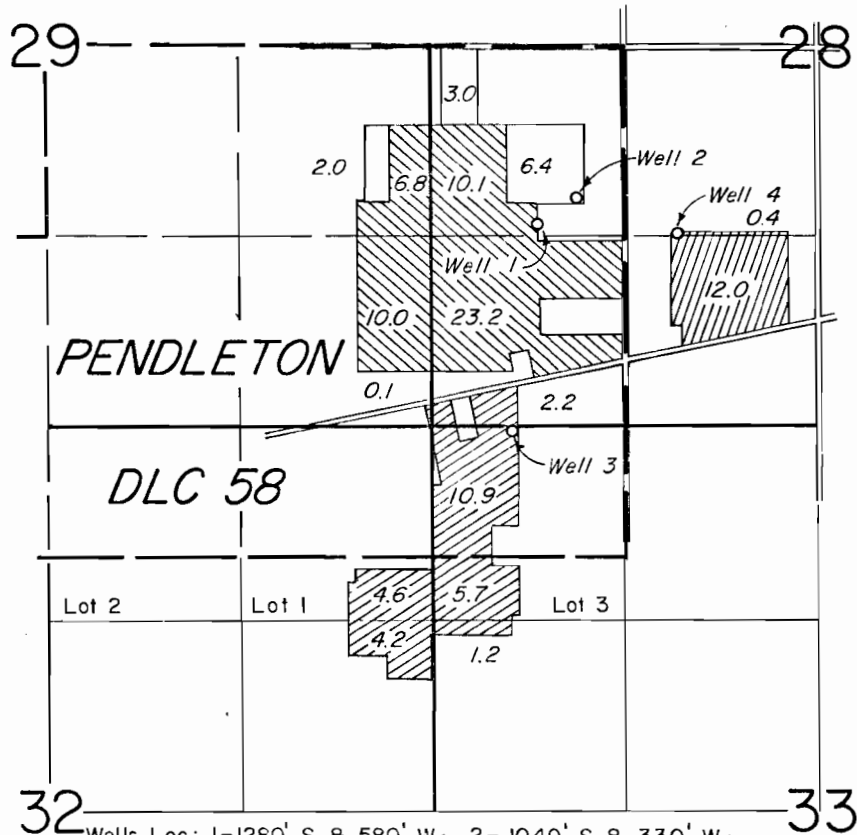


T.3S.,R.1E.,W.M.



Wells Loc: 1-1260' S. & 580' W.; 2-1040' S. & 330' W.;
 3-2660' S. & 770' W.; 4-1300' S. & 360' E.;
 all from the NE corner Pendleton DLC 58

FINAL PROOF SURVEY

UNDER

G-7106	G-6852	
G-8084	G-7478	
Application No. G-9284	Permit No. G-8712	

IN NAME OF

INDUSTRIAL FORESTRY ASSOC.

Surveyed AUG. 4, 1981, by *[Signature]*