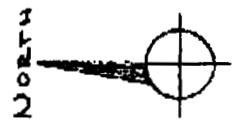
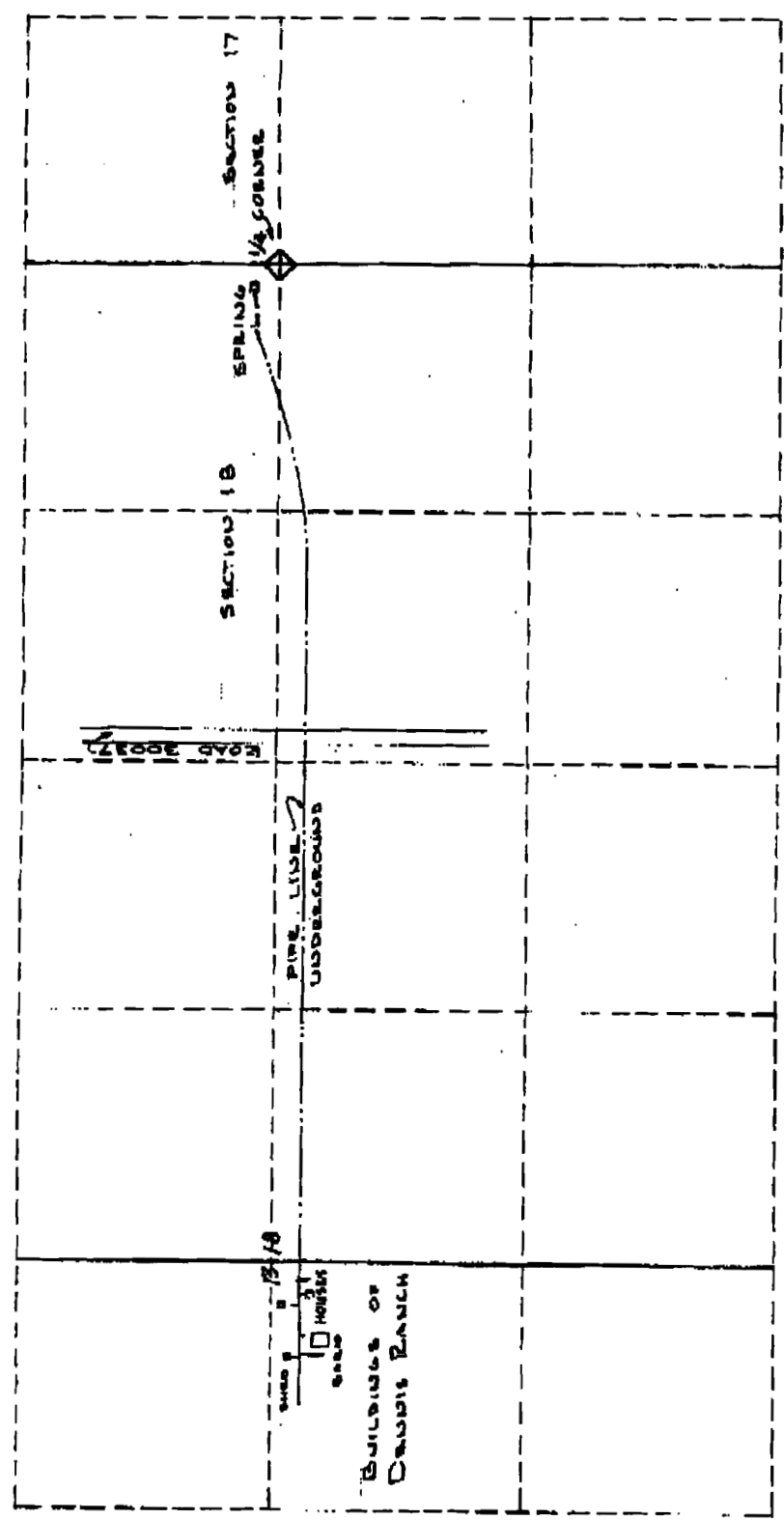


30292
51588

Wm. Russ Misc.

PORTIONS OF SECTIONS 17 & 18
TOWNSHIP 30 SOUTH
RANGE 11 EAST
RANGE 10 EAST

COPY



SCALE 6" = 1 MILE

RECEIVED
APR 13 1965
CIVIL ENGINEER

SUBMITTED BY:
EVERETT R. DENNIS
1407 ESPLANADE AVE.
KLAMATH FALLS, OREGON

Application No. 40663
Permit No. 30392