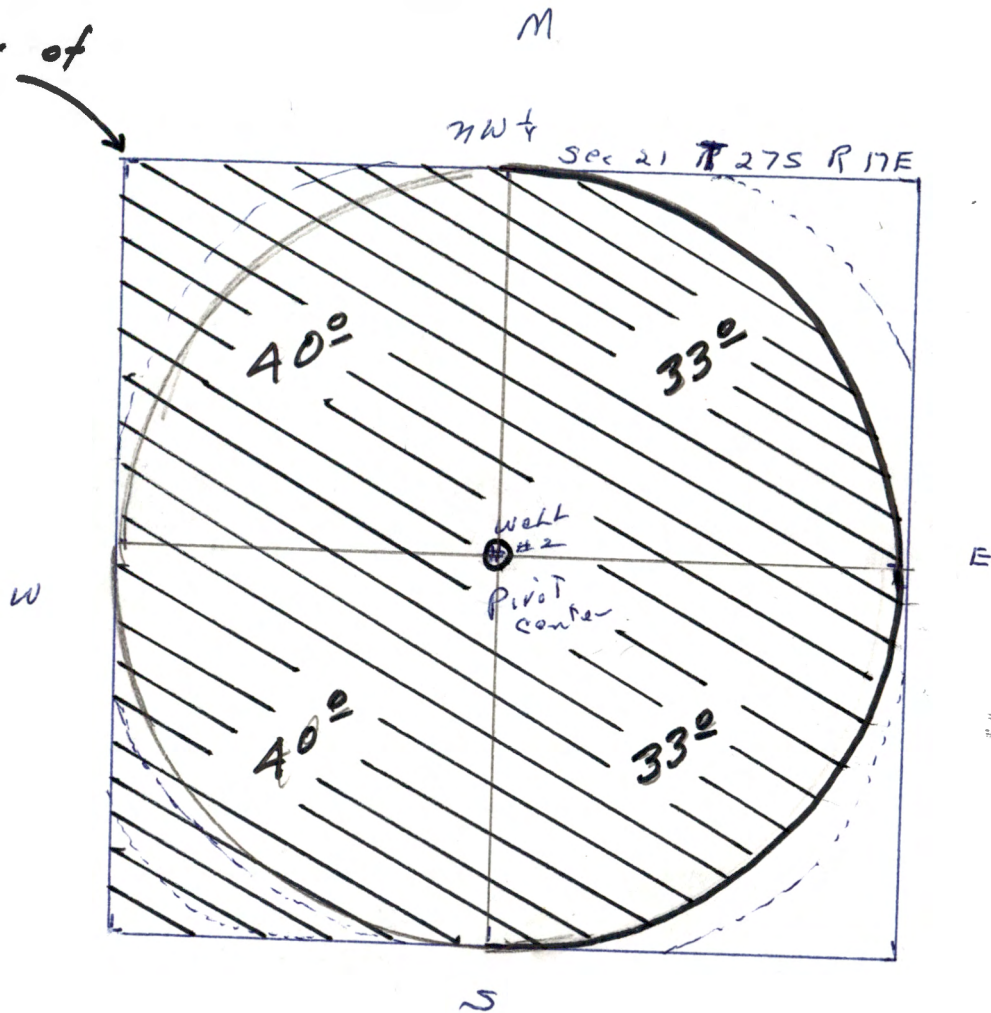


NW corner of
Sec 21



well #2

Tp. 27S., R. 17E.

Scale 8" = 1 mile



RECEIVED

OCT 11 1976

WATER RESOURCES DEPT.
DEPT. OF AGRICULTURE
Salem, OREGON

Well Located 1320 ft. S. & 1320 ft. E.
from the NW corner of
Section 21

Application No. G-7539
Permit No. G 7010