

D-39-4

FINAL PROOF SURVEY BURNT RIVER IRRIG. DIST.

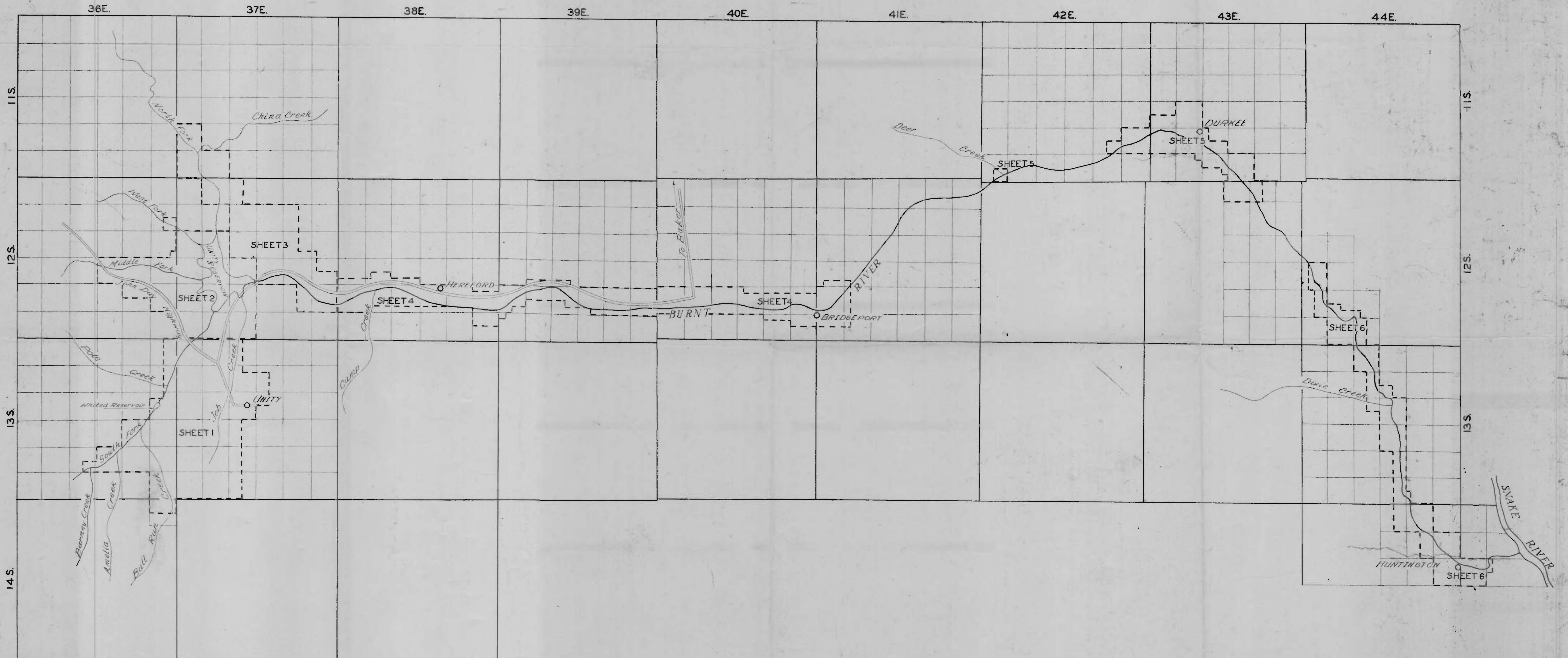
UNDER

APPLICATION NO. R-15751 PERMIT NO. R-726
16069 13565

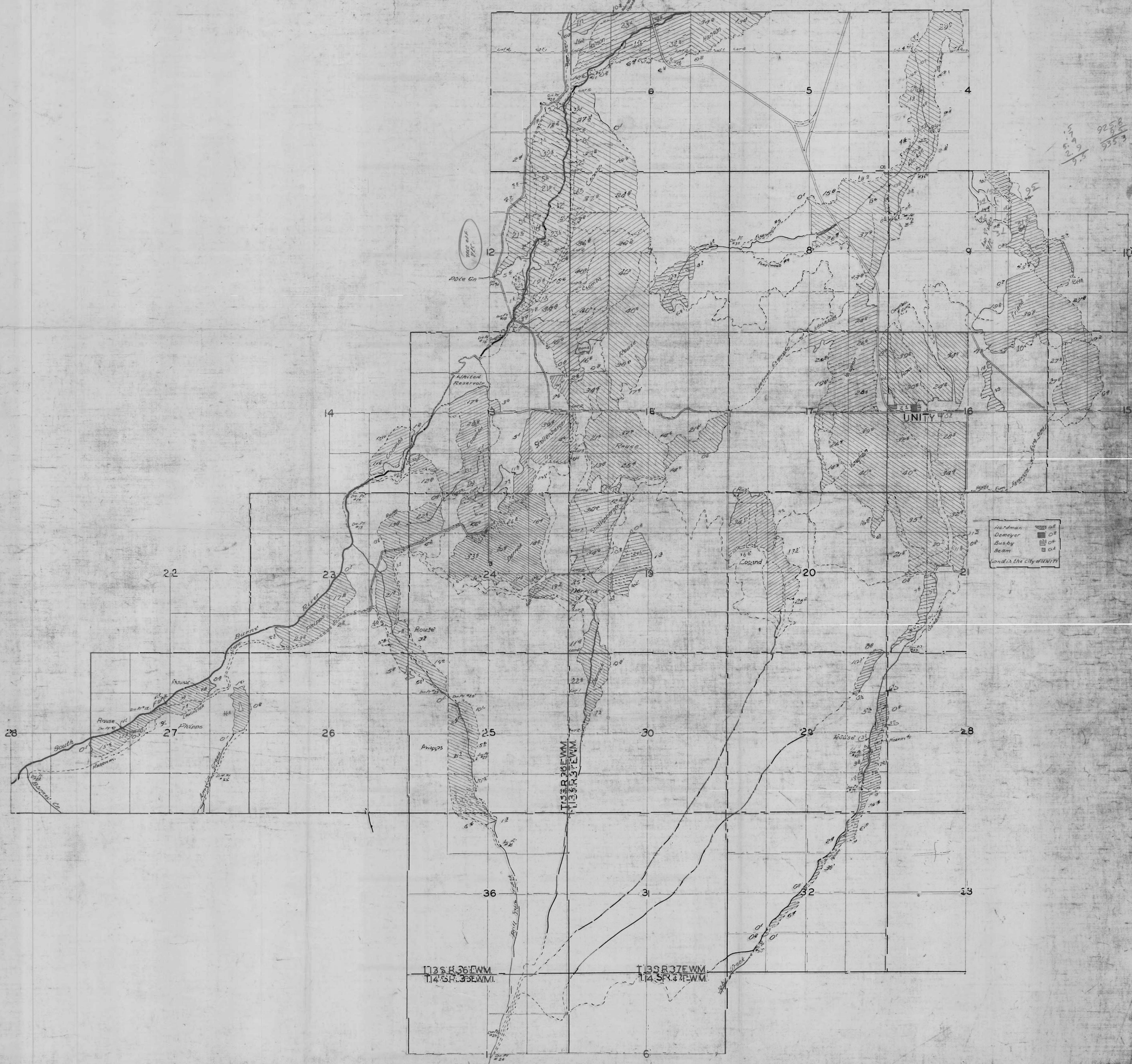
IN THE NAME OF

UNITED STATES OF AMERICA
BUREAU OF RECLAMATION

SURVEYED OCT. 1956 & JULY 1957 BY C. O. BARTELS & T. JONES
1974 BY R. MUCKEN
1980 BY V. CHURCH
1983 BY V. CHURCH & B. ESTES



925.8
88.8
935.3

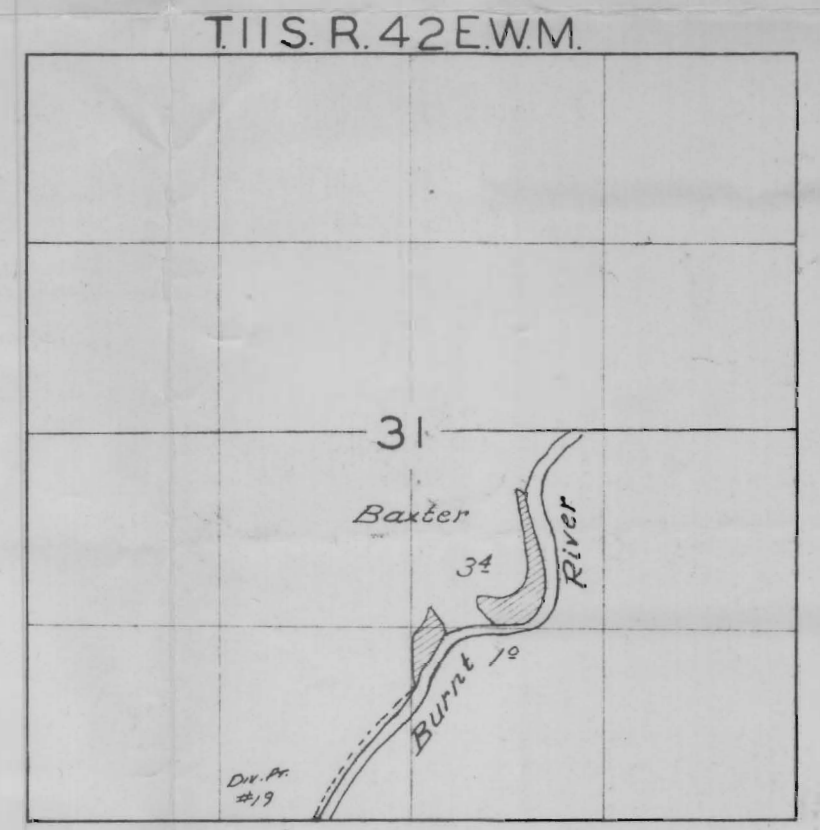


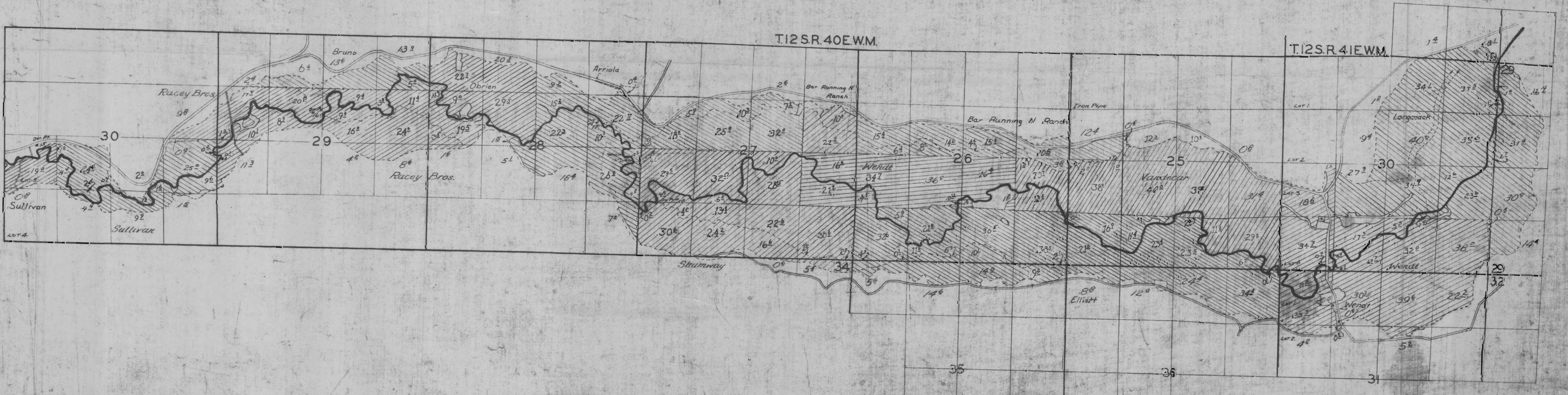
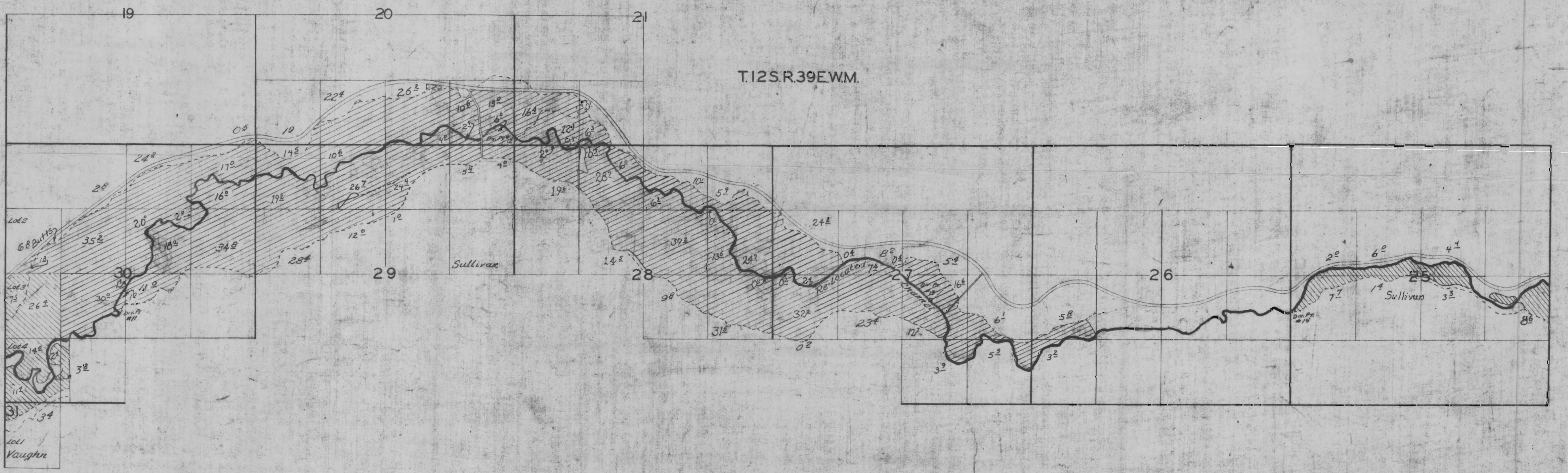
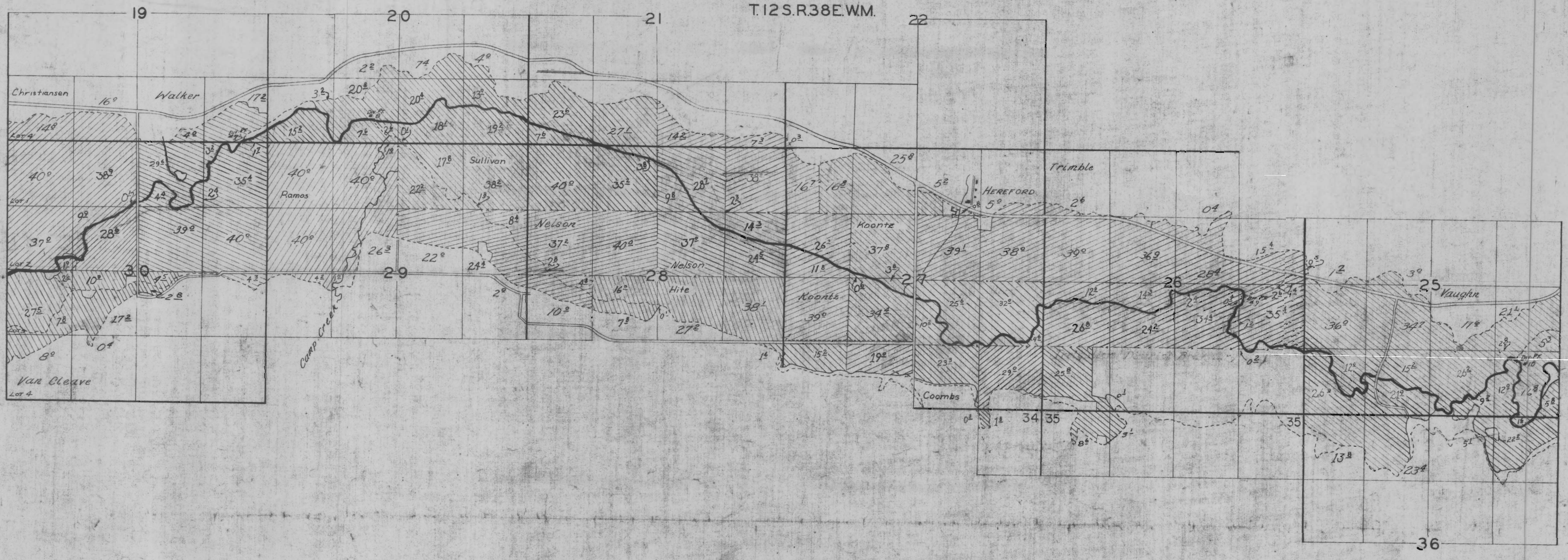


T.12S. R.36E. WM.
T.12S. R.37E. WM.

Note: Contour 3200 is taken from Bureau of Reclamation map of Reservoir area.

RECEIVED
 AUG 8 1963
 WATER RESOURCES DIV.
 SALEM, OREGON

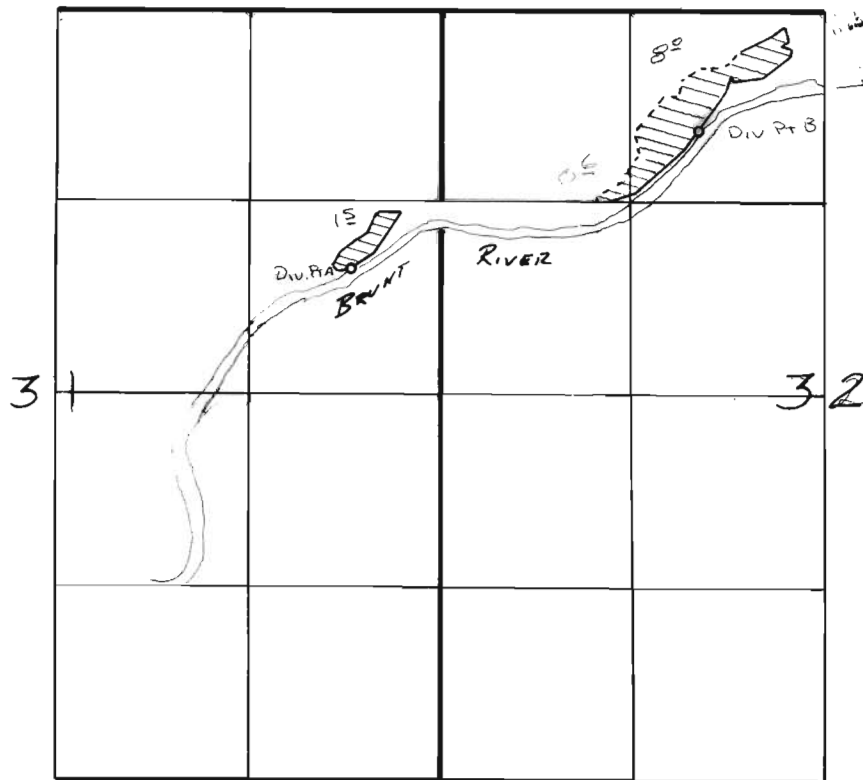






MADE OFF
 W. H. Church
 KDC 7-20-93

T. 11 S., R. 42 E., W. M.

Div. Pt. A Loc: 860' N & 630' W FROM E $\frac{1}{4}$ COR SEC 31

Div. Pt. B Loc: 1800' N & 860' W FROM CENTER SEC 31

Add'l to Brunt River Irrigation
Dist.

Aug 2, 1983

Vernor Lee Church