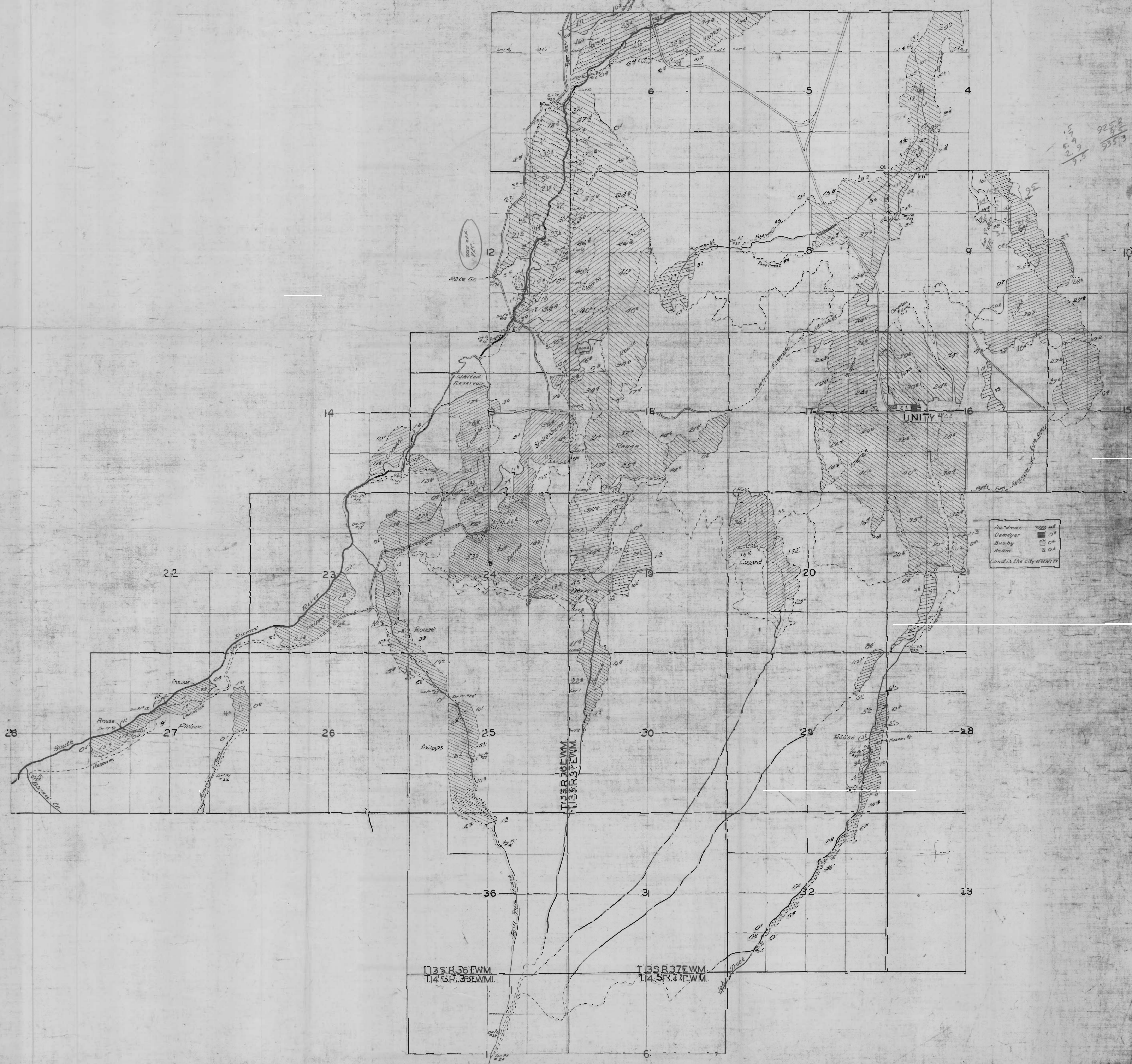


925.8
88.8
935.3

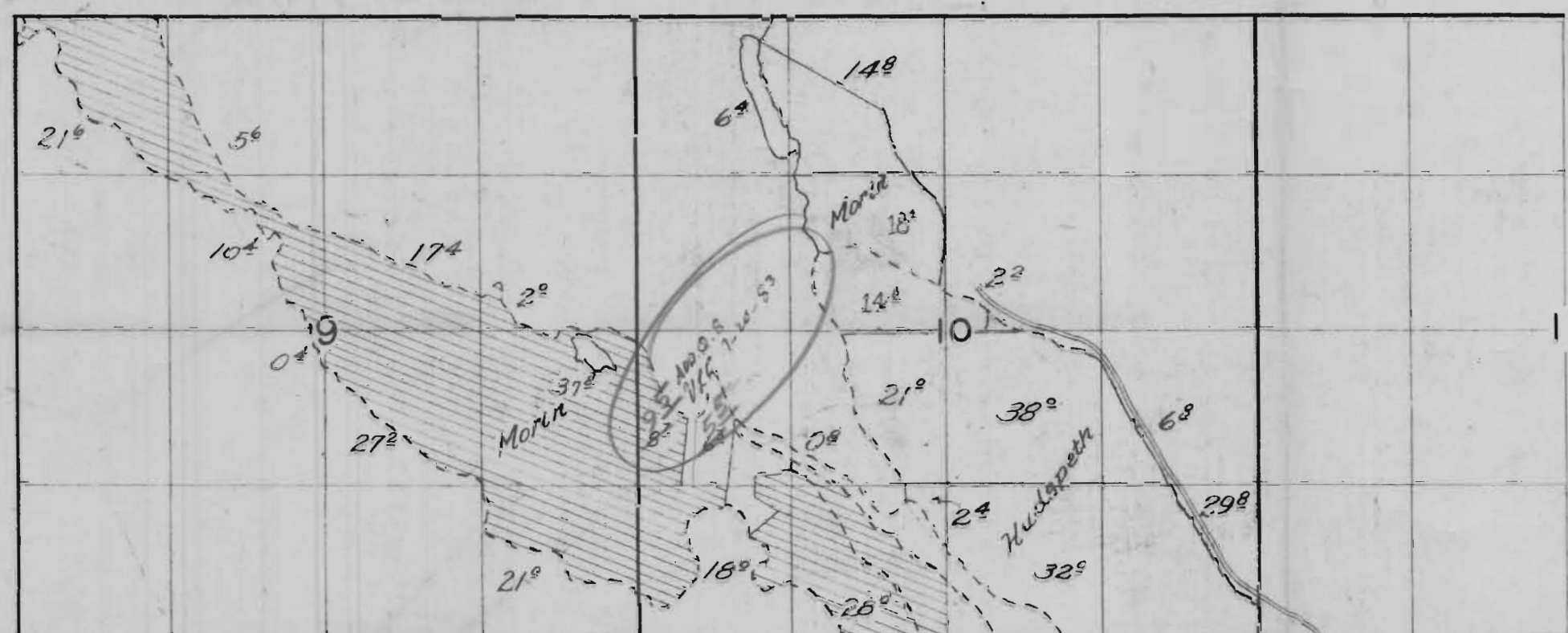




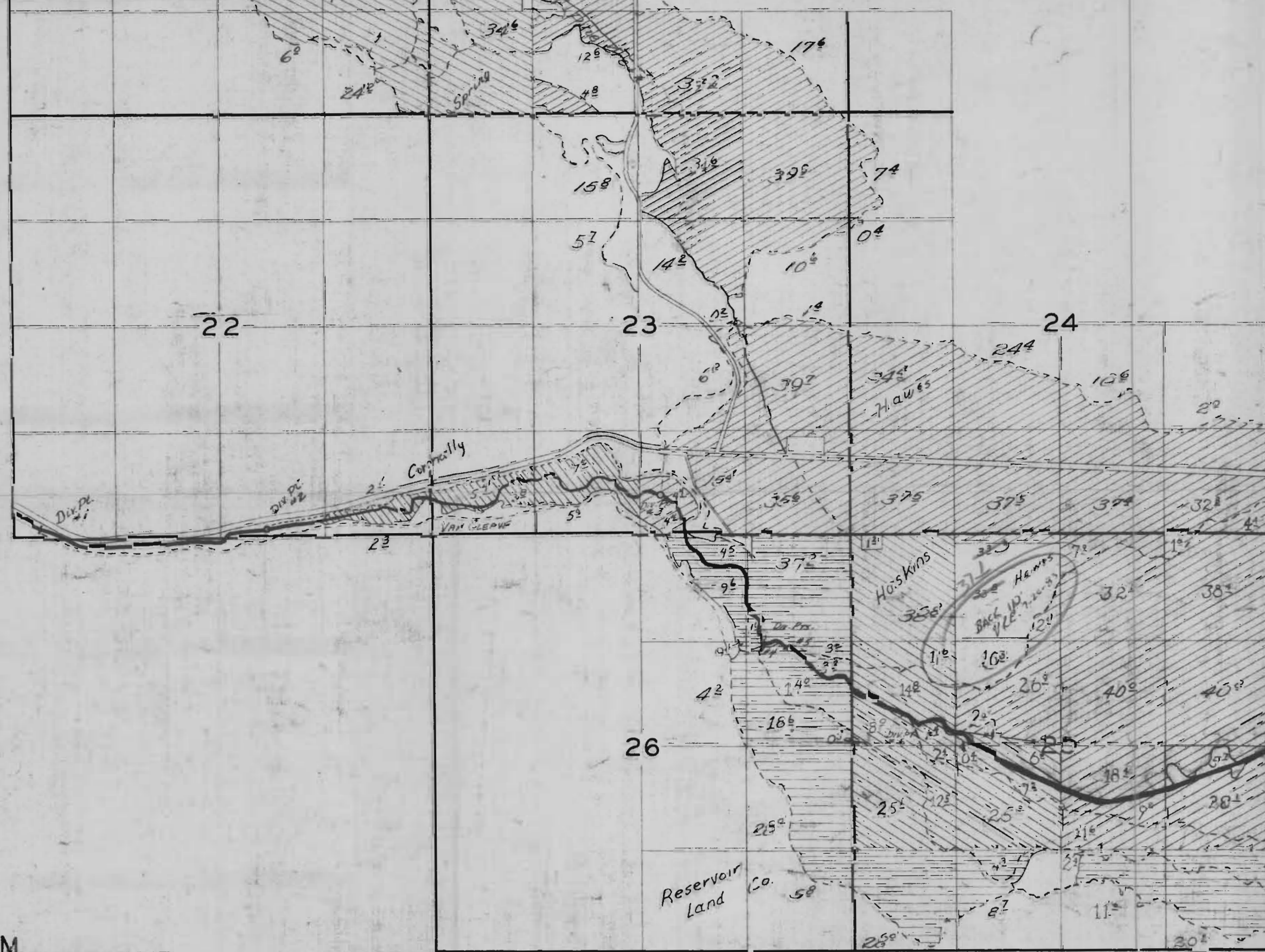
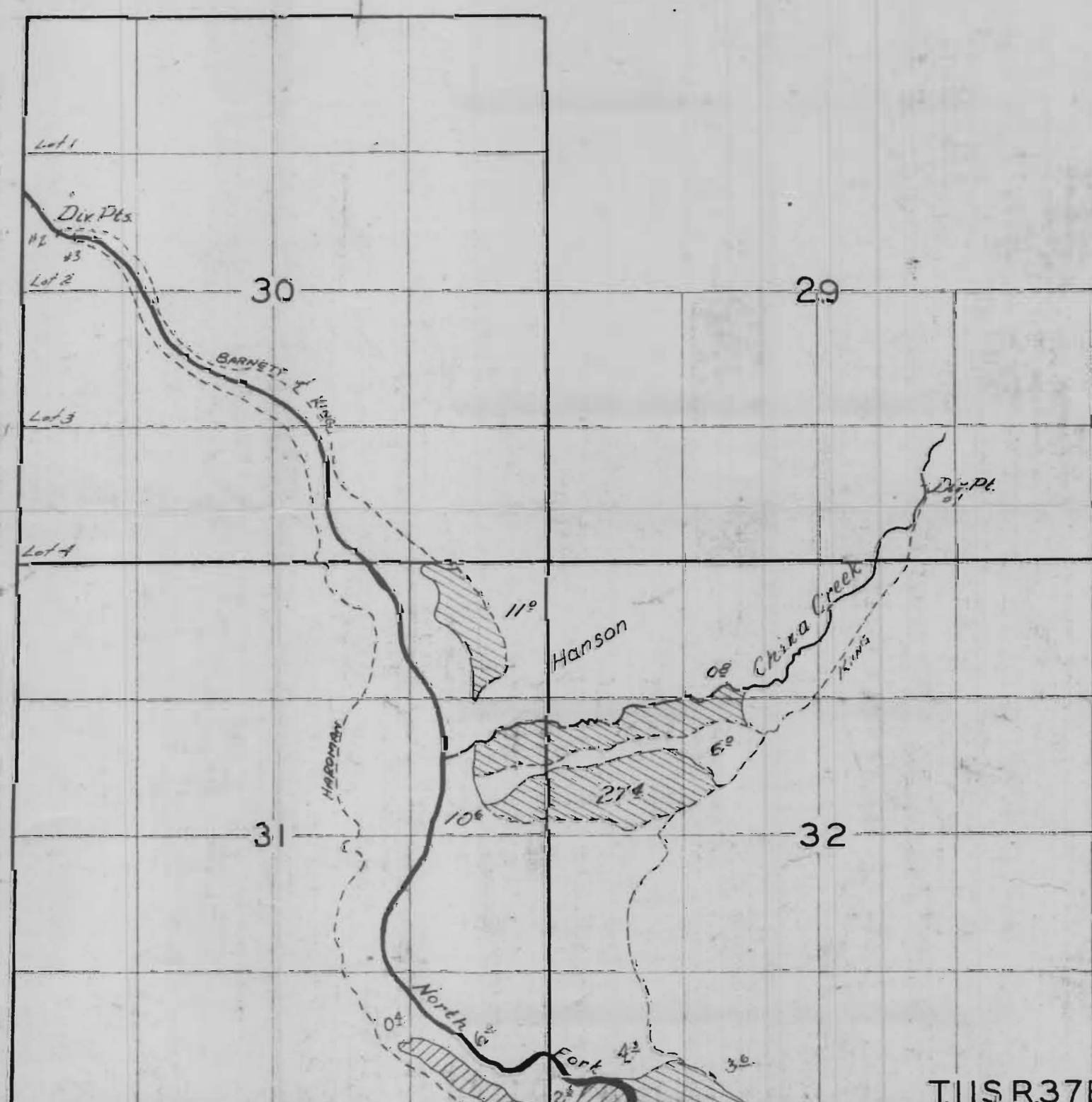
T.12S. R.36E. WM.
T.12S. R.37E. WM.

UNITY RESERVOIR

Note: Contour 3620 is taken from Bureau of Reclamation map of Reservoir area.



T12S.R37E.WM.



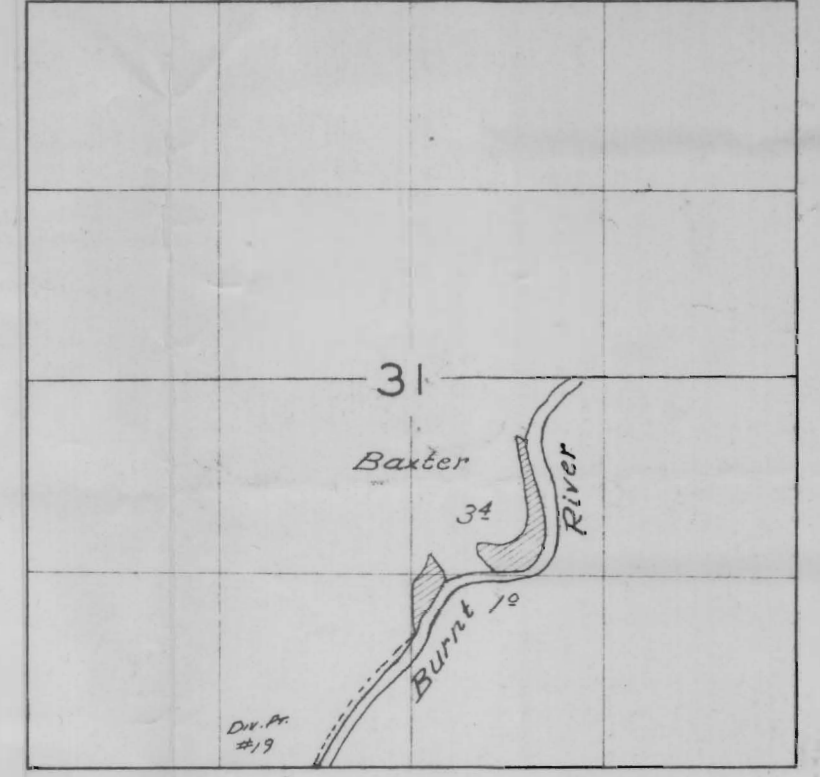
T12S.R37E.WM.
T12S.R37E.WM.

RECEIVED
 AUG 8 1963
 WATER RESOURCES DIV.
 SALEM, OREGON

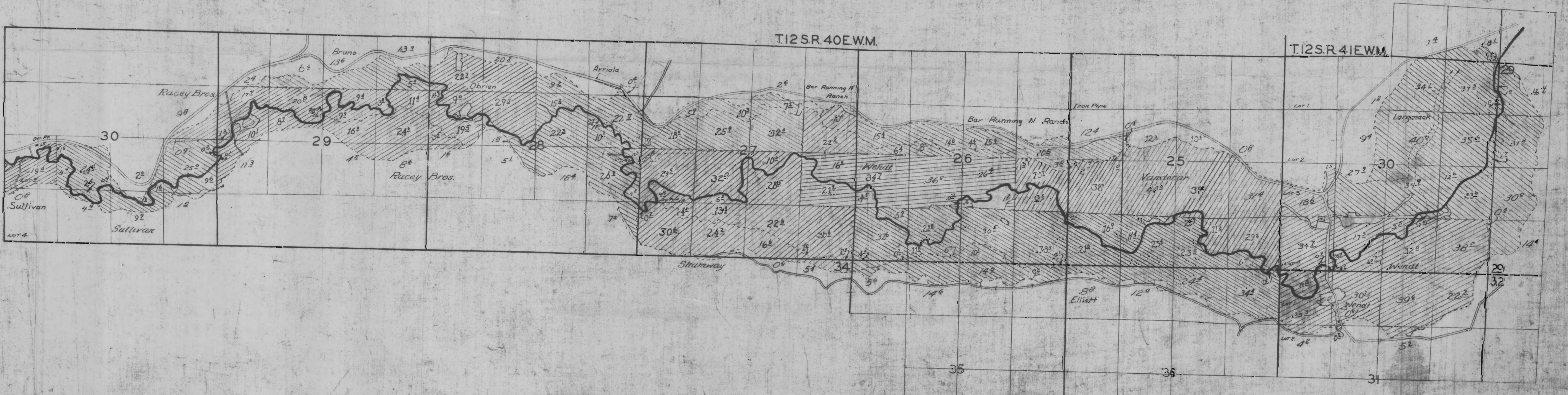
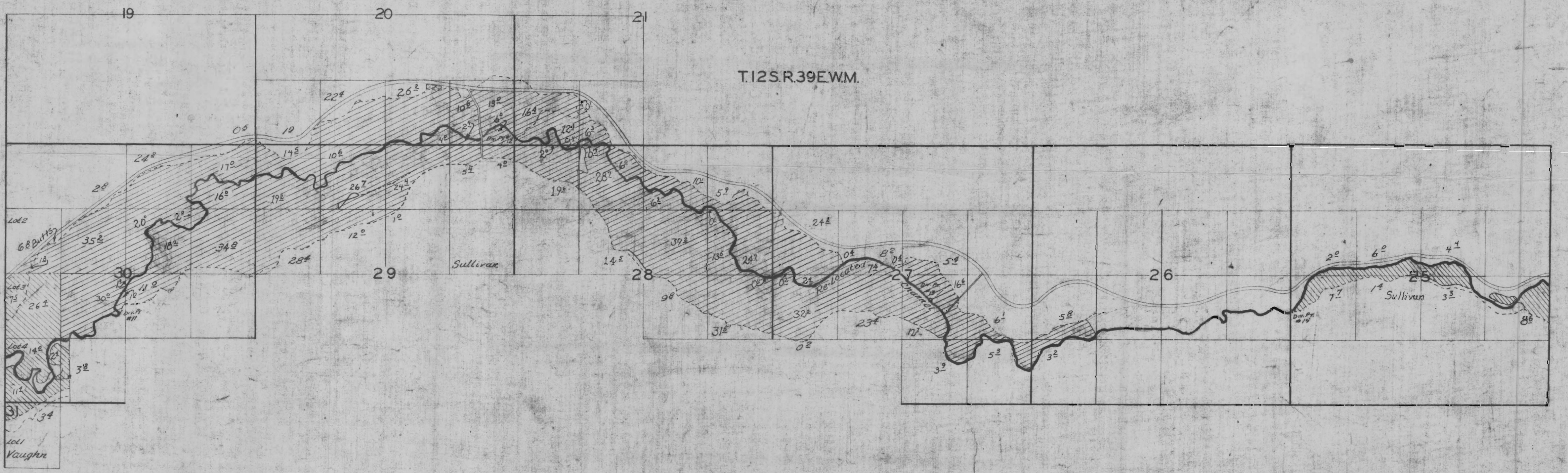
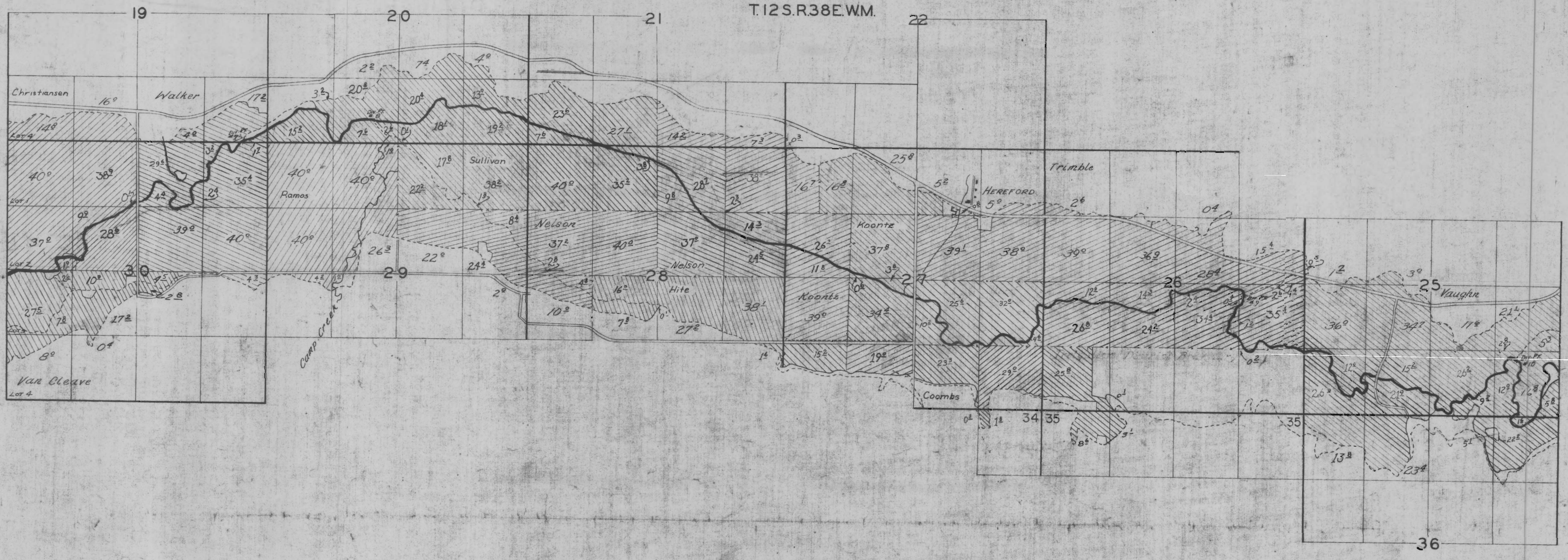


*deleted at
 request of Mrs Alexander,
 Manager, BRID*

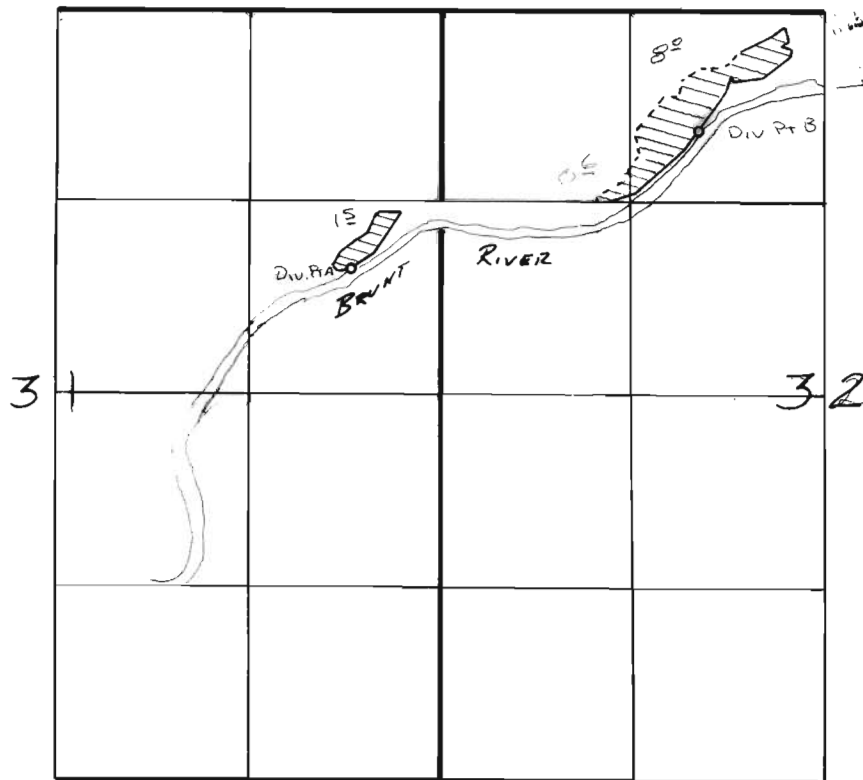
TIIS R.42EWM.



Located from Adjudication Survey



T. 11 S., R. 42 E., W. M.

Div. Pt. A Loc: 860' N & 630' W FROM E $\frac{1}{4}$ COR SEC 31

Div. Pt. B Loc: 1800' N & 860' W FROM CENTER SEC 31

Add'l to Brunt River Irrigation
Dist.

Aug 2, 1983

Vernor Lee Church