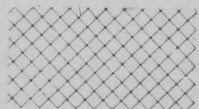


APP 39197

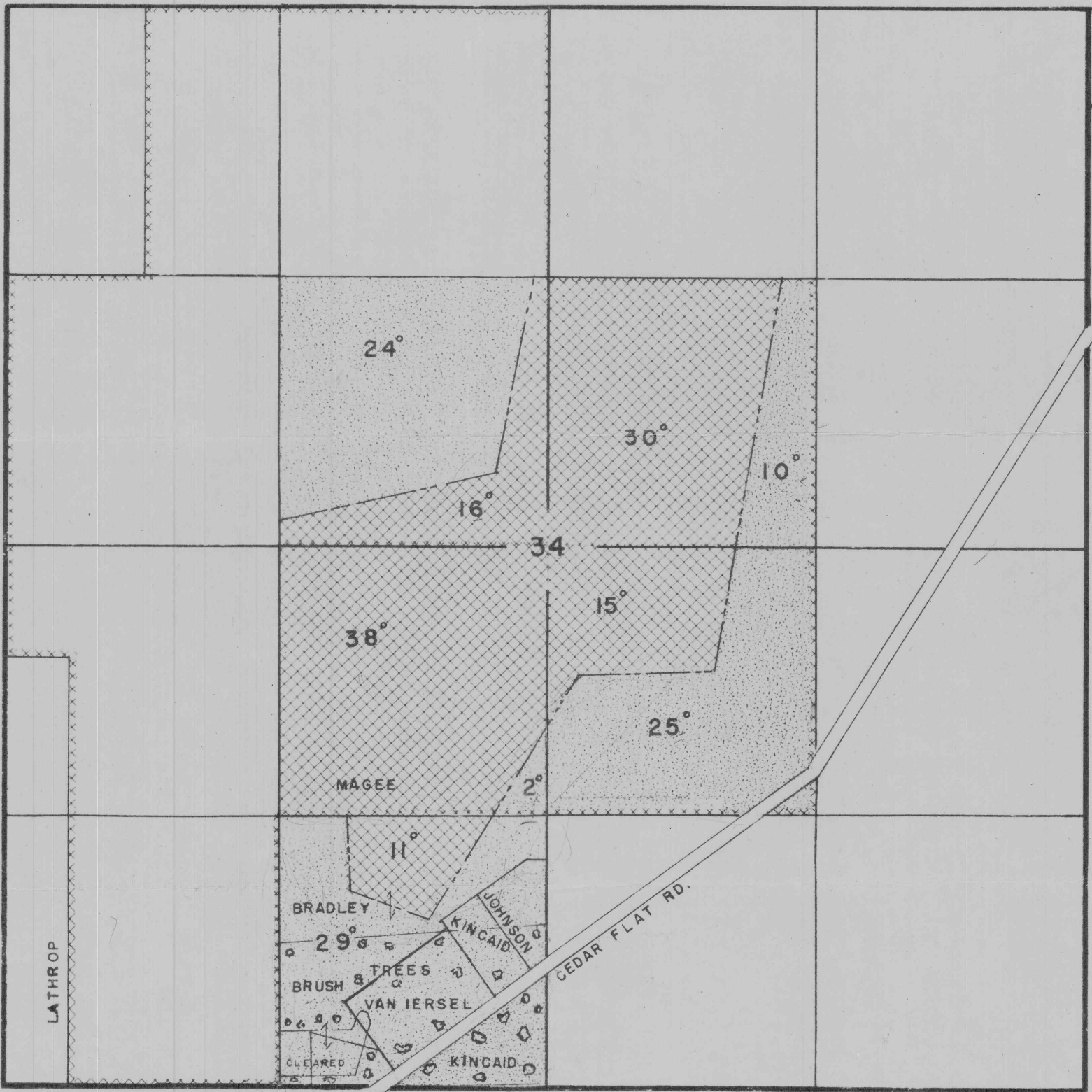
# TOWNSHIP 38 S. RANGE 5 W. W. M.



**RR DECREE, 1862, MUNGER CREEK**  
H.O. & E.M. Norton Cert 76352 1.84 cts Irr & stock Stites Ditch  
S/1 to C.M. STITES & Est. of W.C. Stites

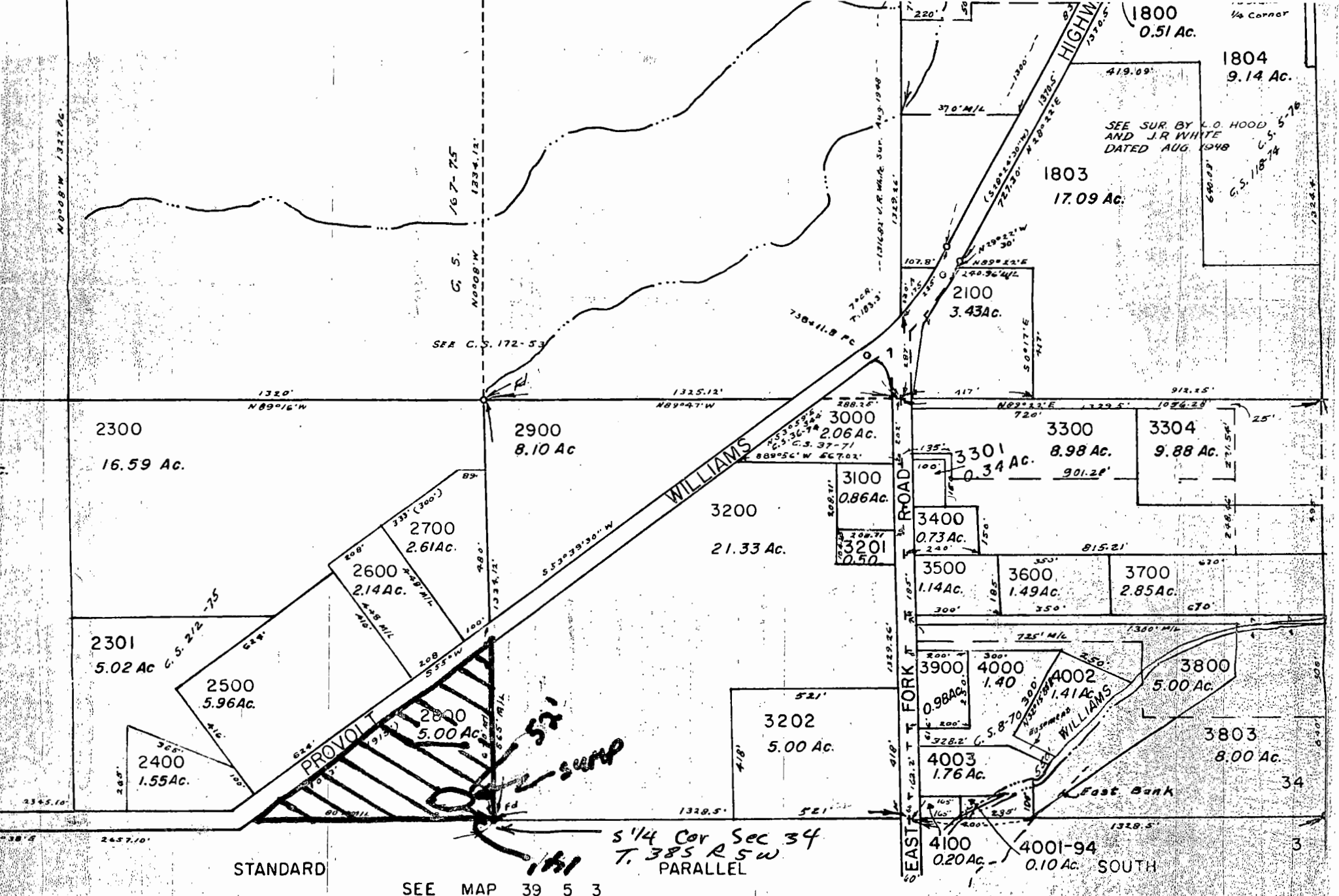


**MUNGER CREEK - 1916** <sup>Permit #</sup> 2938  
Cert 3362 H.O. & C.M. Norton May 25, 1916 1.13 cts  
Munger Cr. supplemented by water from John or Mule Gulch, Marble Gulch & China Gulch



SCALE = 8" = 1 MILE  
FEB. 7. 1964

**RECEIVED**  
FEB 24 1964  
STATE ENGINEER  
SALEM, OREGON



1800  
0.51 Ac. 1/4 Corner

1804  
9.14 Ac.

SEE SUR BY L.O. HOOD  
AND J.R. WHITE  
DATED AUG. 1948

1803  
17.09 Ac.

5-18-14  
C.S. 118-14

C. S. 167-75  
N89°16'W  
1334.13'

SEE C.S. 172-53

WILLIAMS

PROVOLT

T FORK ROAD

5 1/4 Cor Sec 34  
T. 38 S R 5 W  
PARALLEL

STANDARD

SEE MAP 39 5 3

4001-94  
0.10 Ac. SOUTH