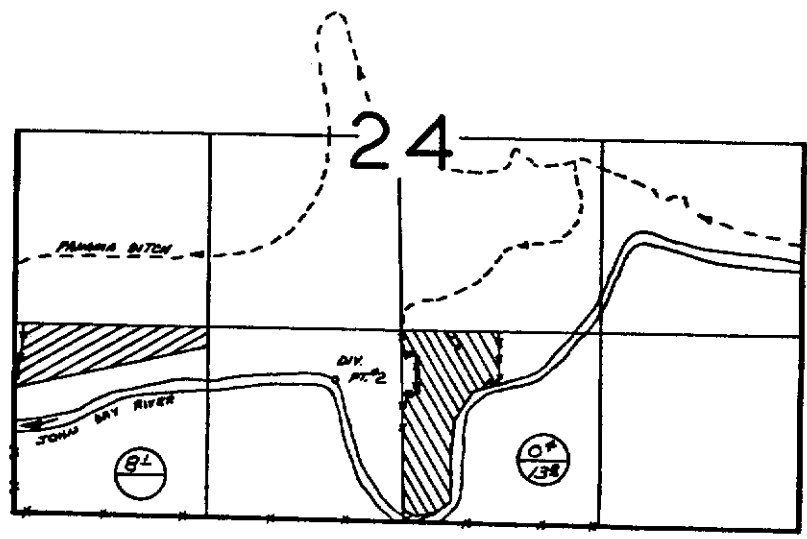
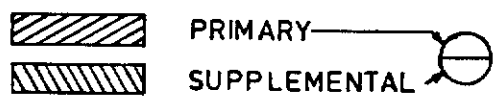


T.13 S., R. 29 & 30 E., W.M.

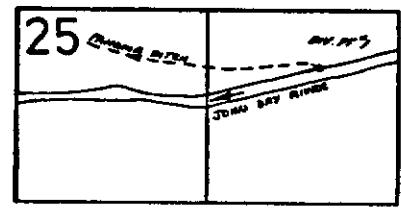


R.29E.



DIV. PTS. LOCATED 370' S / 2100' E FROM NW CORNER SECTION 25, T.13S., R.30E., W.M.  
 / 930' N / 2200' E FROM SW CORNER SECTION 24, T.13S., R.29E., W.M.

R.30E.



FINAL PROOF SURVEY UNDER

T-3897  
 Application No. 54658..... Permit No. 41442.....  
 IN NAME OF

SHIRLEY N. LEE

Surveyed 8-25-79.. 1983., by R. G. T. TEL. JR..

SHEET #1 of 2

T. 13 S., R. 29 E., W.M.

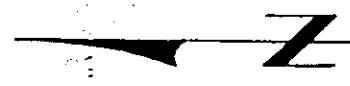
T-3897

Application map for  
Shirley Lee

Scale: 1" = 660'

RECEIVED  
WATER RESOURCES DEPT.  
SALEM, OREGON  
MAR 1 0 1978

RECEIVED  
MAY 9 1978  
WATER RESOURCES DEPT.  
SALEM, OREGON

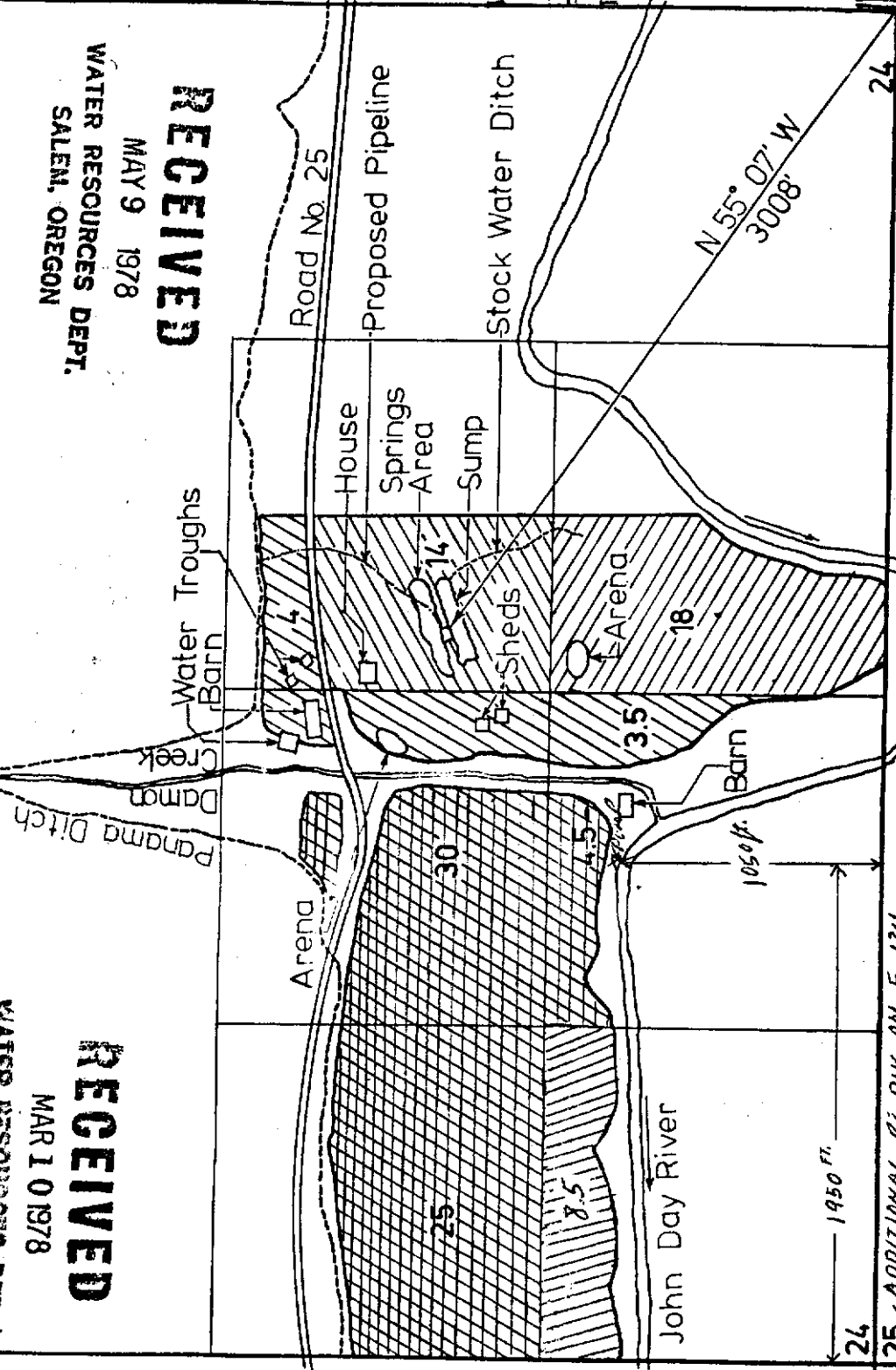


THIS MAP PREPARED BY:  
*Shirley Lee*  
FROM INFORMATION FURNISH  
THE APPLICANT.

Approved:  
*Shirley M. Lee*

Point of  
-Diversion-  
*Panama Ditch*  
John Day River  
NE 1/4 NW 1/4,  
Section 25,  
T 13 S, R 30 E, WN  
T-3897

SEE SHEET FOR NEXT PART



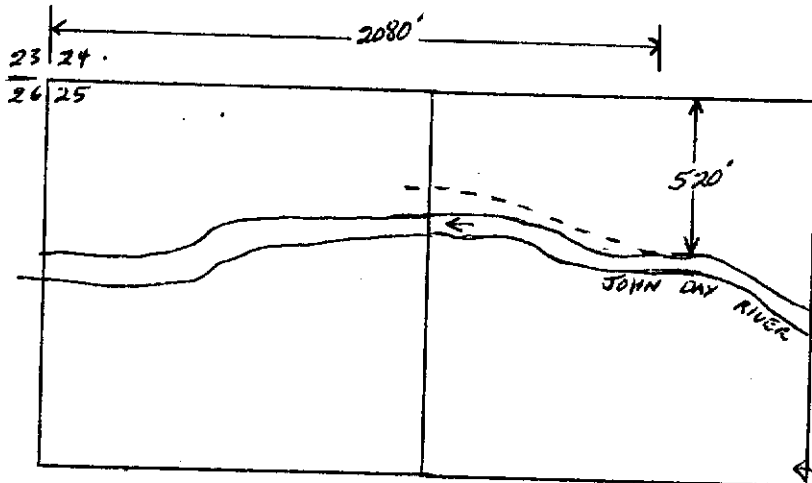
- Existing primary right from the Panama Ditch (P. E-134)
- Supplemental application from the springs and sump - P. 41441
- Primary application from the Panama Ditch P. 41442
- Supplemental application from the springs and sump P. 41441
- Primary right from the springs and sump (C. 24885)
- Supplemental application from the Panama Ditch P. 41442
- Primary right from the springs and sump (C. 25249)
- Supplemental right from the Panama Ditch (P. E-134)

S. 92° E  
2705 ft from  
Common cor.  
from sec. 23,  
24, 25, & 26,

23 24  
26 25  
1950 ft.  
ADDITIONAL PI. DIV. ON E-134

**RECEIVED**  
MAY 9 1978  
WATER RESOURCES DEPT.  
SALEM, OREGON

NEW POINT OF DIVERSION  
PANAMA DITCH



NE 1/4 NW 1/4 SEC 25.  
T. 13 S. R. 30 E.

SCALE 8" = 1 MILE