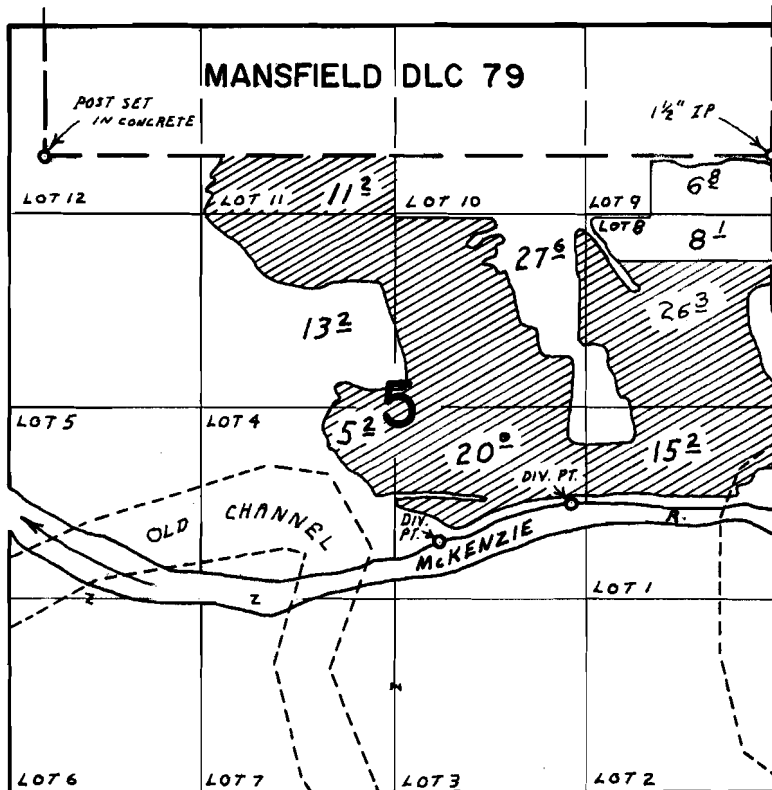


T.17S.R.3W.W.M.



DIV. PTS. LOC. : 2380'S. & 23600'E. ; 2670'S & 2700'E. ; BOTH FROM SW COR. MANSFIELD DLC 79

FINAL PROOF SURVEY

UNDER

Section No. 43559 Range No. 32420

PLAT NO. OF

McKENZIE SAND and GRAVEL COMPANY

WITNESSED OCT. 15, 1970 by G. BACA

Inspection: May 17, 1979 by S. Brown