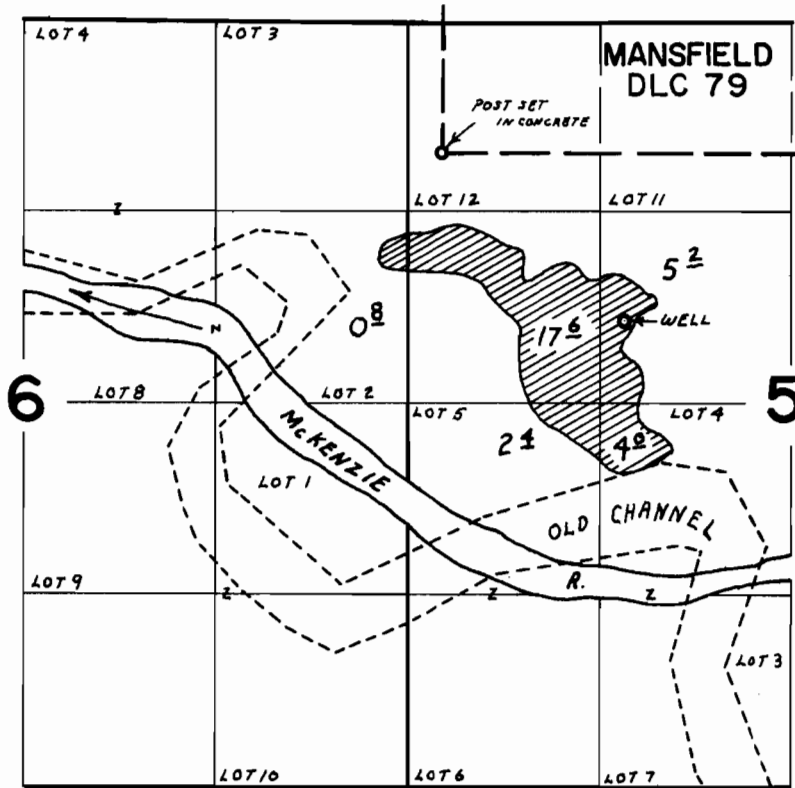


T.17S.R.3W.W.M.



WELL LOC. 1190'S. & 1260'E. FROM SWCOR. MANSFIELD DLC 79

FINAL PROOF SURVEY

ORDER

Map No. G-462/1 and G-4347

McKENZIE SAND and GRAVEL COMPANY

OCT. 15 1970 G. BACA

Inspection: May 17, 1979 by S. Brown