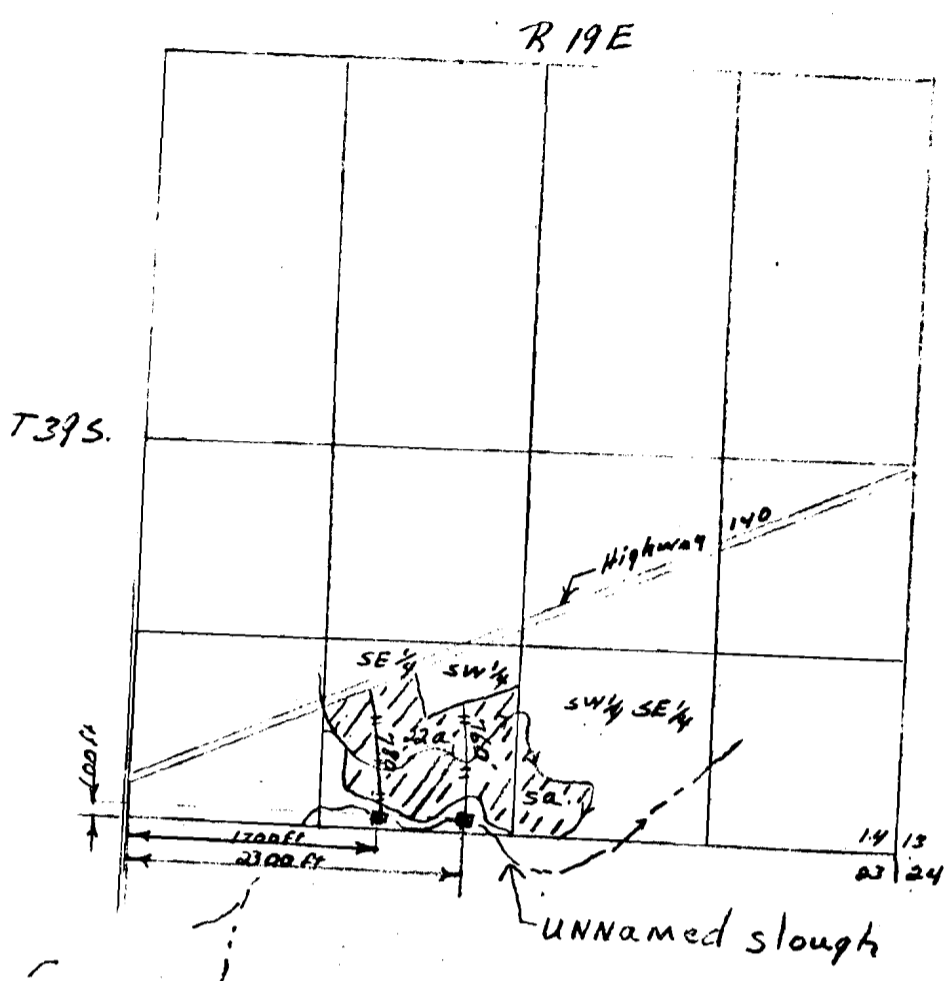


6-52363
STATE ENGINEER
SALEM OREGON



RECEIVED
JUN 2 1971
STATE ENGINEER
SALEM OREGON

Application No. G-5535
Permit No. G 5420

WATER RIGHT APPLICATION
BURT SWINGLE May, 1971
T. 39 S. R. 14 E. Section 14
Scale - 4" = 1 mile
Traced from aerial photo - CHZ 488-164

Legend
/// area to be irrigated
□ sumps
-|- pipeline
~> Lakeview Water Users Canal