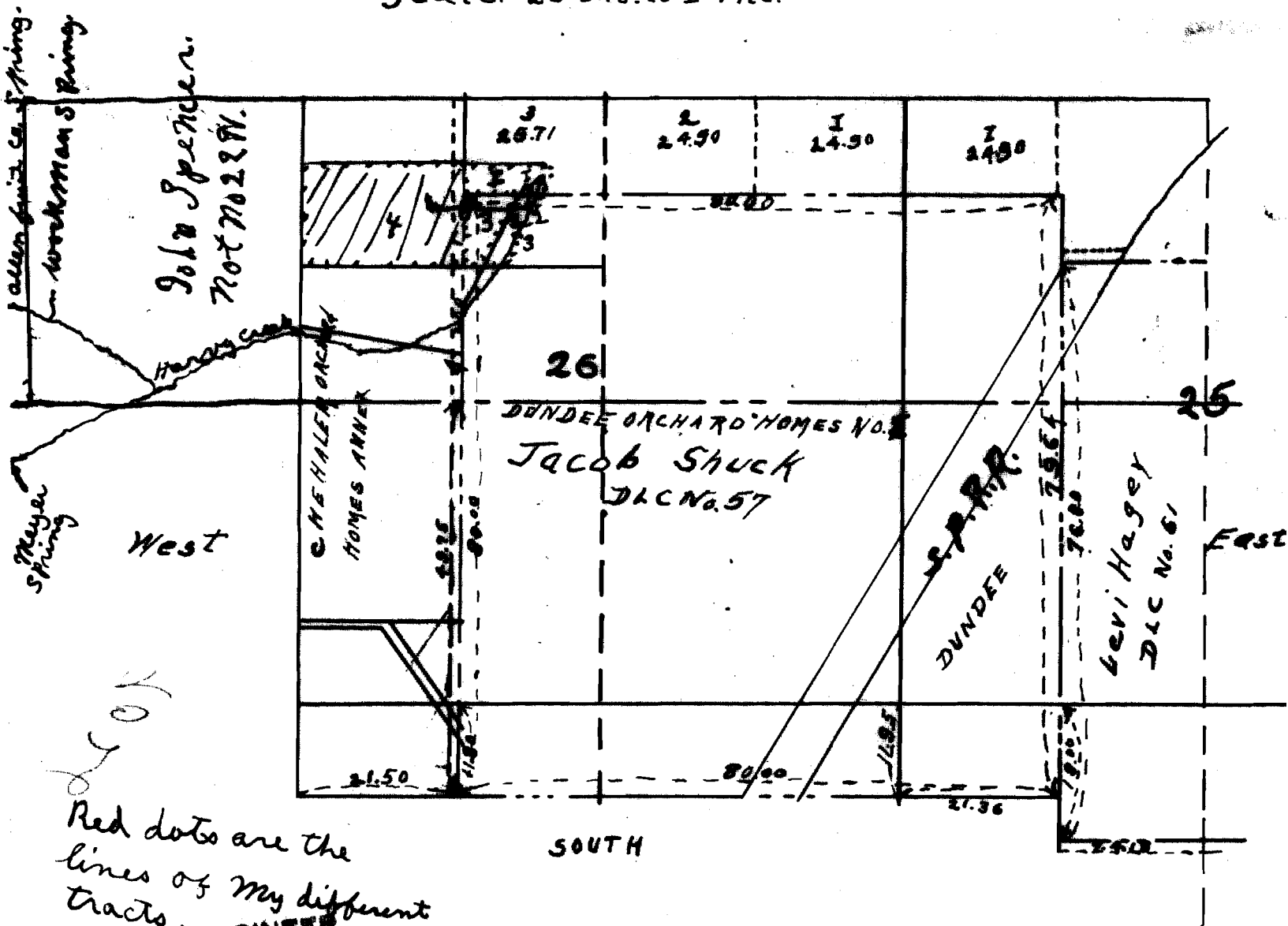


North
 T.P. 3 S.R. 3 W. W.M.
 Yamhill County Oregon
 Scale: 20 chs. to 1 inc.

Application No. 26
 Permit No. - 5930



Red dots are the
 lines of my different
 tracts
 STATE ENGINEER
 RECEIVED

JUN 23 1923

SALEM, OREGON

1. Spring
2. Rife Ram. on creek.
3. upper end of 1 1/2 inch intake Pipe in creek.
4. Cistern.

The line 2 & 3 are on, is the Harvey Creek.
 The line west, Running Parallel with creek is
 the County Road.