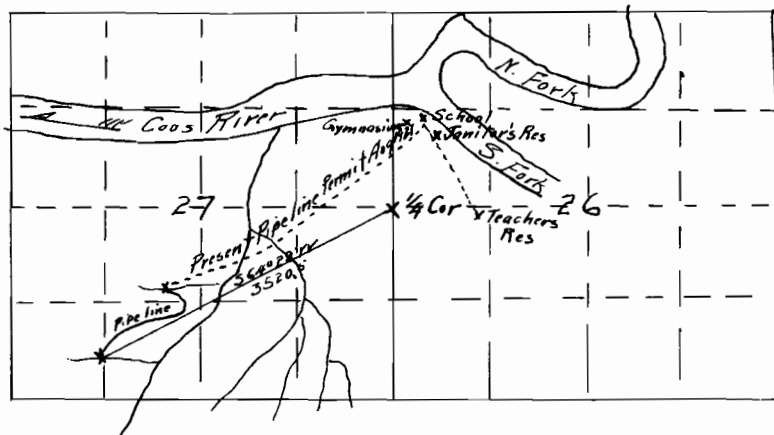


MAP
of Sections 26 and 27 T.25S., R.12W.4M., Coos Co. Ore.
To Accompany Application for Permit
To appropriate water
by
School District #36 Coos County, Ore.
(Coos River Consolidated)



I, D. L. Buckingham, of Marshfield, Coos County Ore.
do hereby certify that this map was made from notes taken by me
during an actual survey made Aug 1, 1922 and that it correctly represents
the works described in the accompanying application together with the
location of streams, intake and terminals of the system

D. L. Buckingham

112
D. L. Buckingham
19

APPLICATION N. 8593
ORDER N. 5586