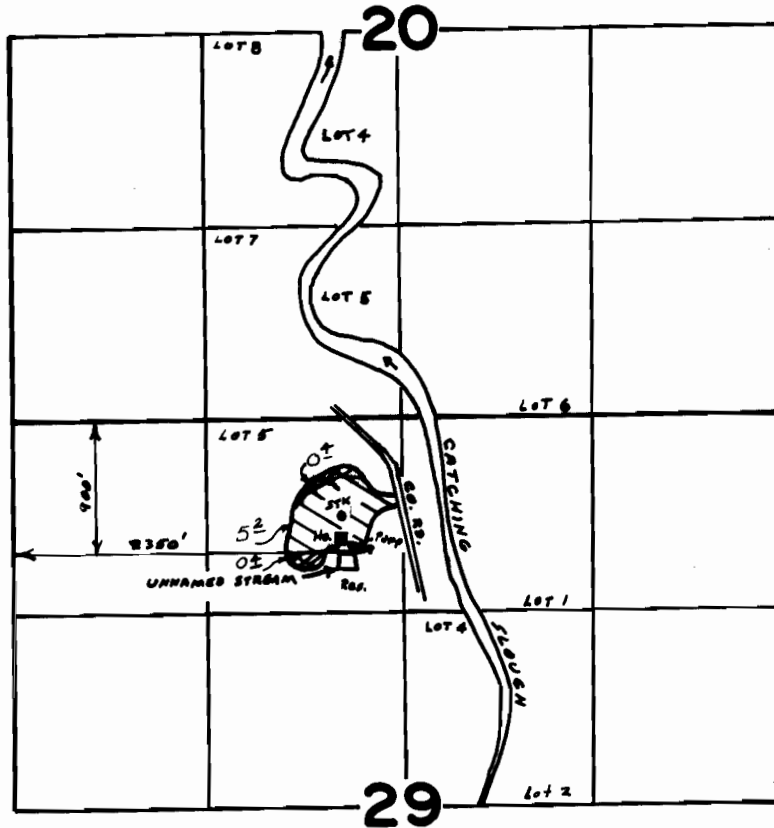




T.26S., R.12W., W.M.



-  SUPPLEMENTAL
-  PRIMARY

SCALE: 4" = 1 mile

FINAL PROOF SURVEY UNDER

R- 57206 R- 7601
Application No. 57207... Permit No. 43287...
IN NAME OF

..... LOUIE EVONIUK

Surveyed AUG. 8, 1979, by S. DONALDSON