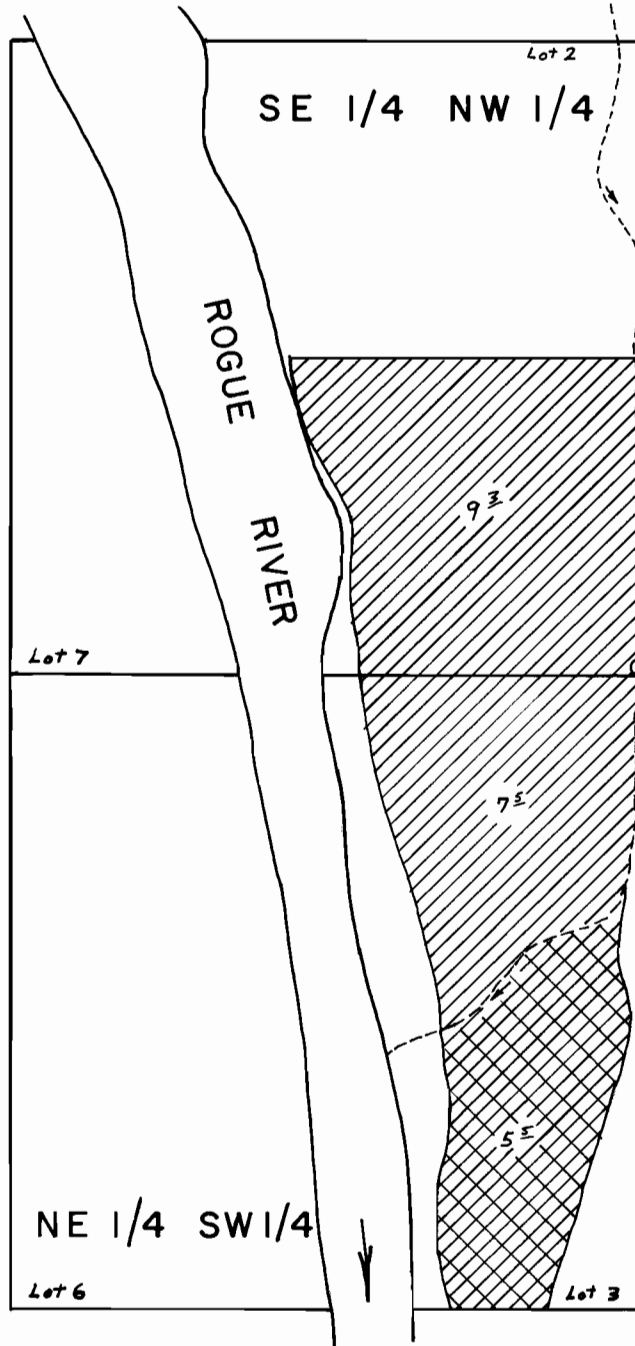
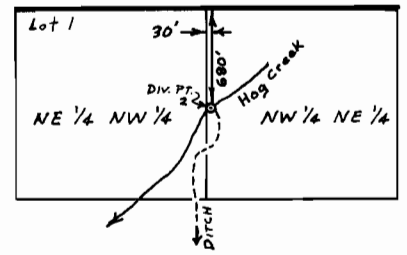


T. 35 S., R. 1 W., W. M.





SEC. 29



DIV. PT. 1
DIV. PT. 2
UNN. STREAM
DITCH
30'
60'
Hog Creek
NE 1/4 NW 1/4
NW 1/4 NE 1/4

29

-  HOG CREEK
-  UNN. STREAM

FINAL PROOF SURVEY
UNDER

Application No. 55092.. Permit No. 41326.....
IN NAME OF

WAYNE H. &/or GORDON W. SAFLEY

Surveyed Dec. 7, 1979, by B.R. SUND.....

Scale 1" = 400'