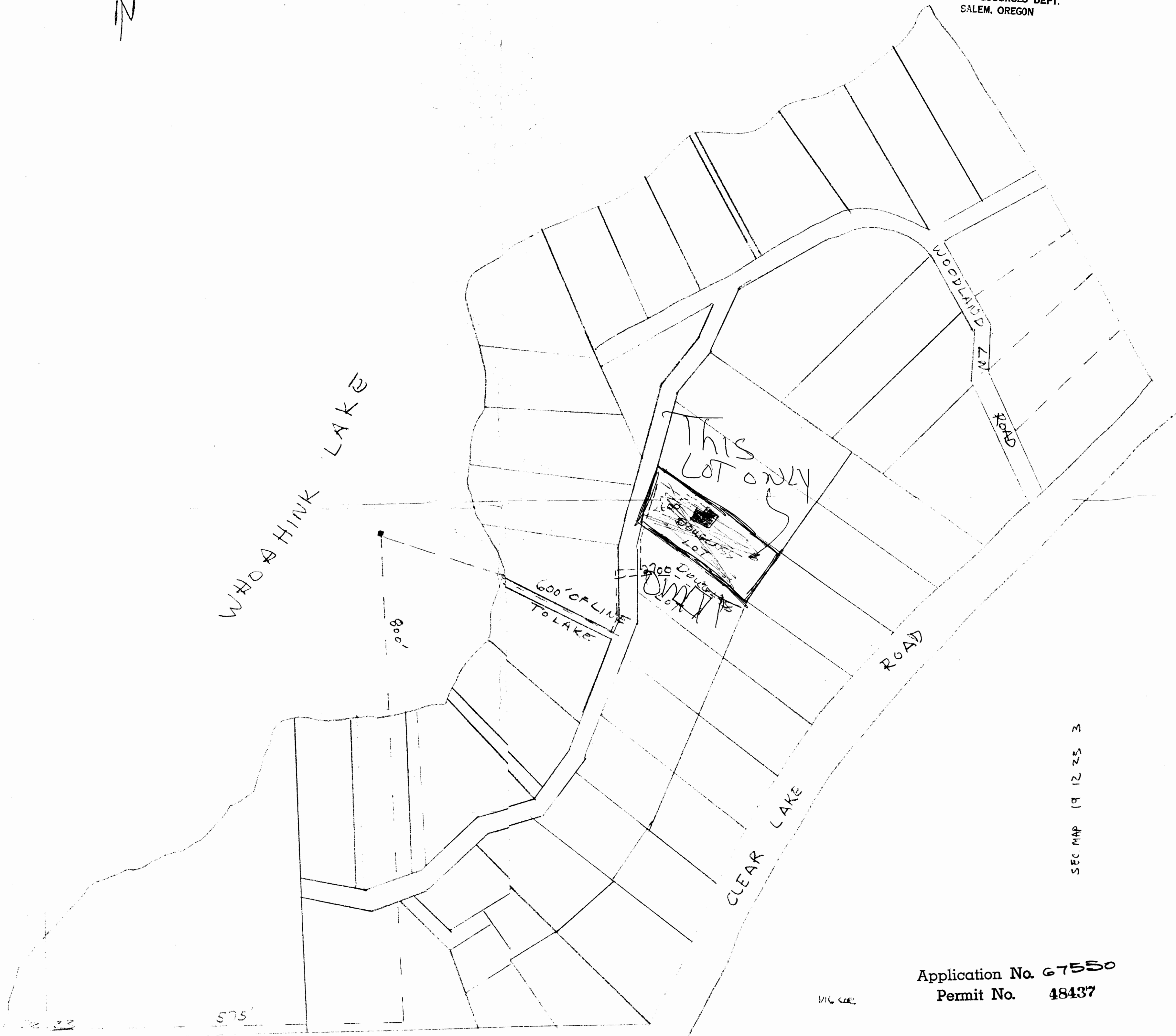


SW 1/4 SW 1/4 SEC. 23 T. 19S. R. 12 W. W.M.
LANE COUNTY
SCALE 1" = 100'

RECEIVED
APR 24 1984
WATER RESOURCES DEPT.
SALEM, OREGON



SEC. MAP 19 12 25 3

Application No. 67550
Permit No. 48437

27126

RECEIVED

FEB 1984

WATER RESOURCES DEPT
SALEM, OREGON

RECEIVED

OCT 12 1983

WATER RESOURCES DEPT
SALEM, OREGON



67550
48407

See Map 19 12 23 3

(4 00' 00" N 01' 00" E (1300')

1/16 Cor.

See Map 19 12 22 4

(4 00' 00" N 01' 00" E

WHOAHINK

LAKE

097-07

LEAVITT

LANE

ALLEN

PARK

NO. 1174

LAKE S
CAMP

WOODLAND

LINDEN

CLEAR LAKE

COUNTY

22 23
27 26

See Map 19 12 26 2

See Map 19 12 23 3

