

RECEIVED
 APR 11 1984
 WATER RESOURCES DEPT
 SALEM, OREGON

Application No. 68058
 Permit No. 48469

NE 1/4 NE 1/4 SEC. 32 T7S R5W WWM
 POLK COUNTY

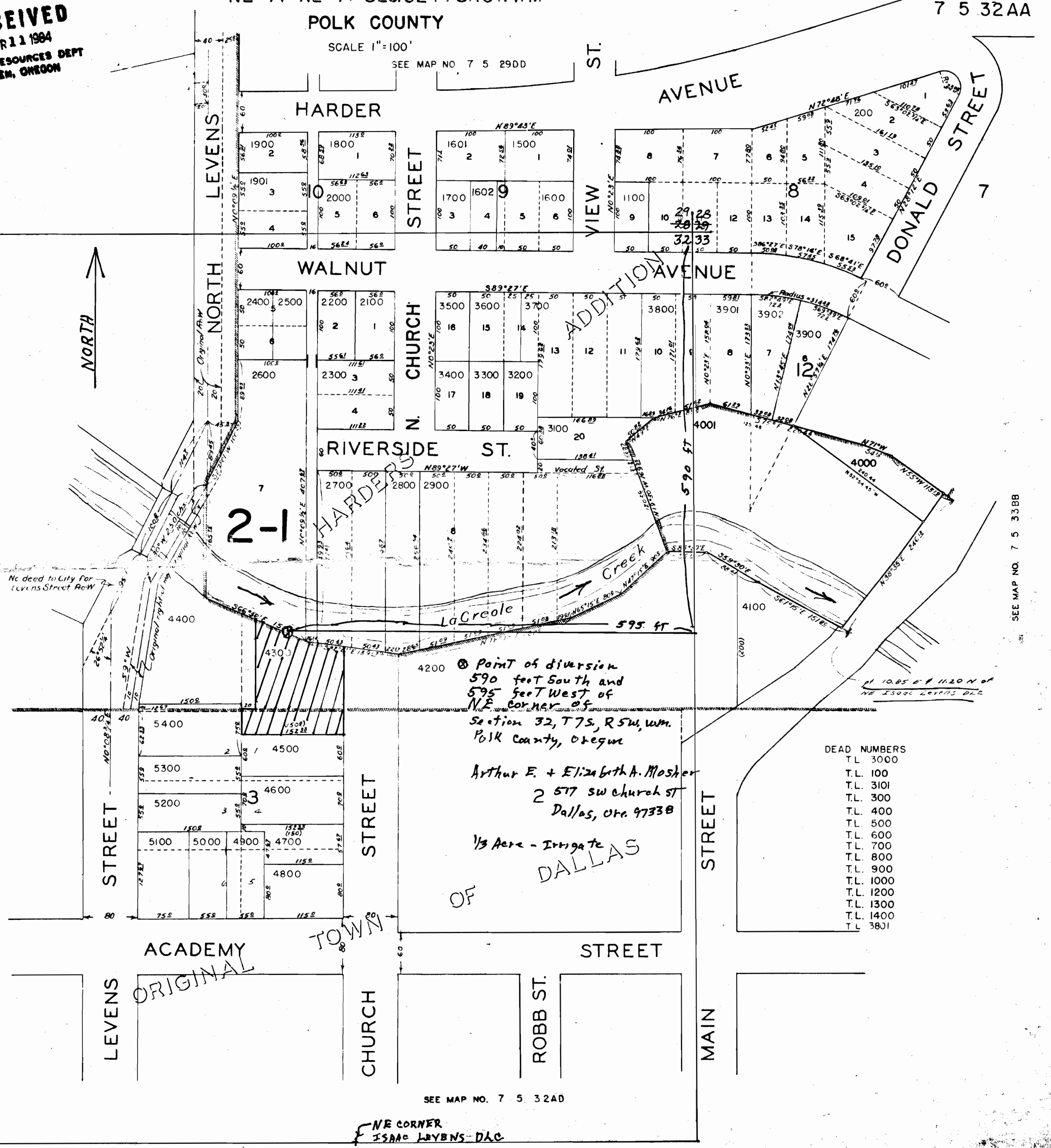
DALLAS
 7 5 32AA

SCALE 1"=100'

SEE MAP NO. 7 5 29DD

SEE MAP NO. 7 5 32AB

SEE MAP NO. 7 5 33BB



NORTH

2-1

Point of diversion
 590 feet South and
 595 feet West of
 NE corner of
 Section 32, T7S, R5W, WWM.
 Polk County, Oregon
 Arthur E. + Elizabeth A. Mosher
 2 577 SW Church St
 Dallas, Ore 97338
 1/3 Acre - Irrigate
 DALLAS

- DEAD NUMBERS
- T.L. 3000
 - T.L. 100
 - T.L. 3101
 - T.L. 300
 - T.L. 400
 - T.L. 500
 - T.L. 600
 - T.L. 700
 - T.L. 800
 - T.L. 900
 - T.L. 1000
 - T.L. 1200
 - T.L. 1300
 - T.L. 1400
 - T.L. 3801

SEE MAP NO. 7 5 32AD

NE CORNER
 ISAAC LAYBENS - DAC

7 5 32AA