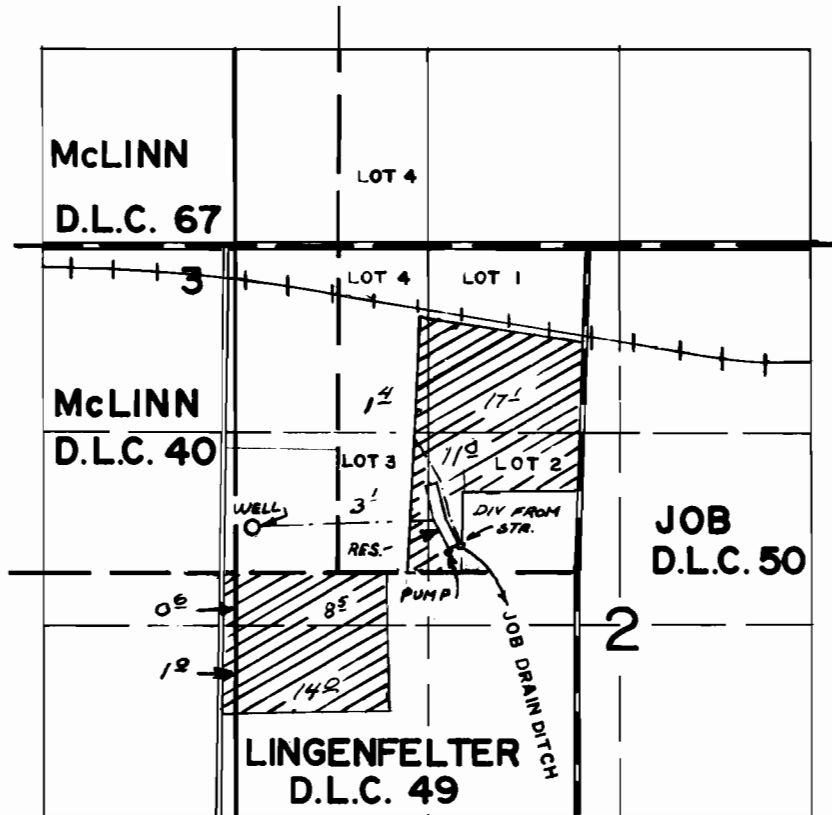


# T.1S.R3W.W.M.



DIV. FROM RES. LOC: 130' N. & 750' E. FROM S.E. COR. McLINN D.L.C. 40  
 DIV. FROM STREAM LOC: 150' N. & 850' E. FROM S.E. COR. McLINN D.L.C. 40  
 WELL LOC.: 300' N. & 570' W. FROM S.E. COR. McLINN D.L.C. 40

## FINAL PROOF SURVEY UNDER

G-8055                      G-7461  
 Application No. 55730... Permit No. 41740.....  
 IN NAME OF

.....EDMUND DUYCK.....

Surveyed APR. 24. 19.79, by R.G.MUCKEN.....