

# WATER RIGHT MAP FOR LOCATION CHANGE

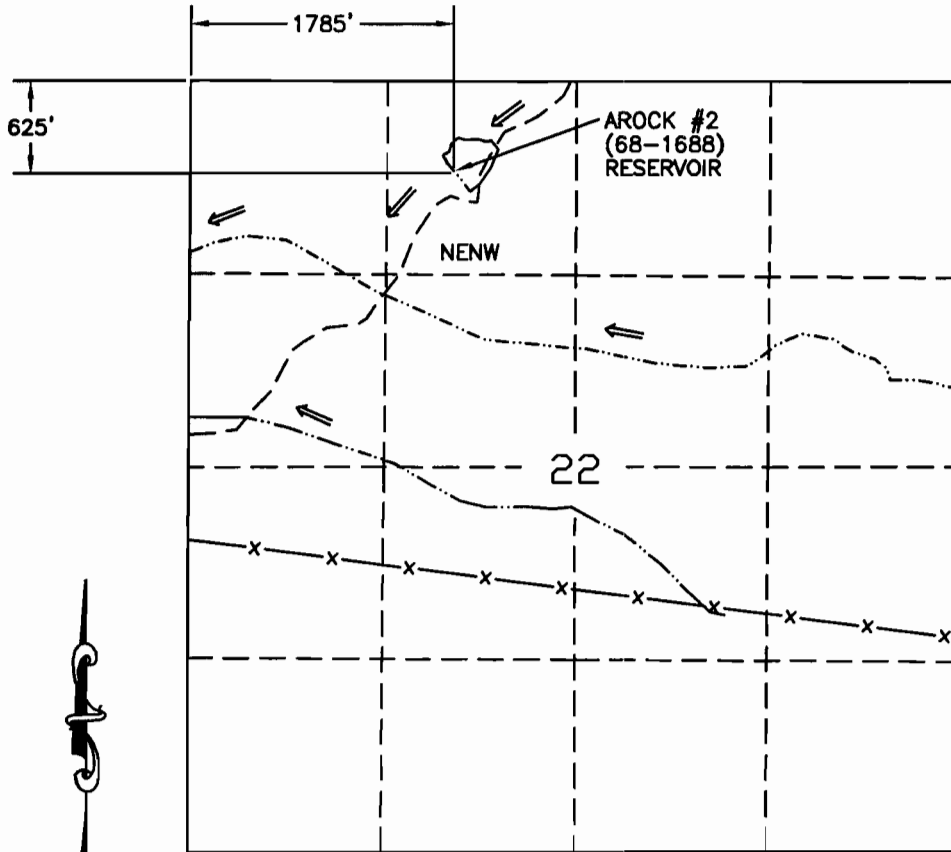
NE1/4 NW1/4 SEC 22 T 31S R 43E W.M.

U.S.G.S. QUAD - DRY CREEK RIM, OREG. - 7 1/2'

RECEIVED

AUG - 1 1997

WATER RESOURCES DIV.  
SALEM, OREGON

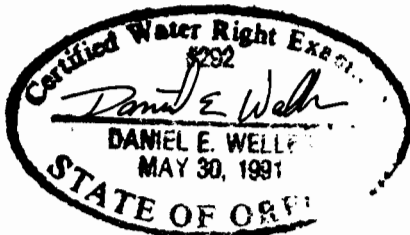


## LEGEND

- x — FENCE
- - - JEEP TRAIL
- · - · - CHANNEL
- ⬠ RESERVOIR



## AROCK #2 (68-1688) RESERVOIR



SCALE 1"=1320'

THIS MAP IS FOR THE PURPOSE OF LOCATING A WATER RIGHT AND IS NOT INTENDED TO PROVIDE LEGAL DIMENSIONS FOR LOCATION OF PROPERTY BOUNDARIES.



UNITED STATES DEPARTMENT OF THE INTERIOR  
BUREAU OF LAND MANAGEMENT  
DIVISION OF OPERATIONS VALE DISTRICT

## AROCK #2 (68-1688) RESERVOIR

DESIGNED \_\_\_\_\_  
 REVIEWED *Daniel E. Weller*  
 APPROVED *[Signature]*  
CHIEF, BRANCH OF ENGINEERING

DRAWN: CG SCALE: 1"=1320'

DATE: 07/27/93 SHEET 1 OF 1

DRAWING NO. DR-03-9172.45-322

ACAD 13/SDESK  
DWG FILE:AROCK2.DWG