

01  
24 Ac.

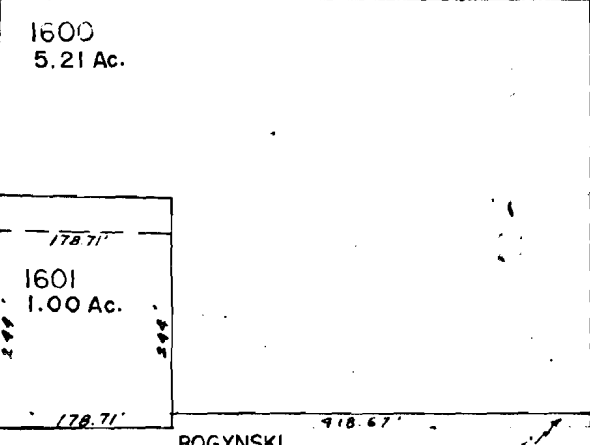
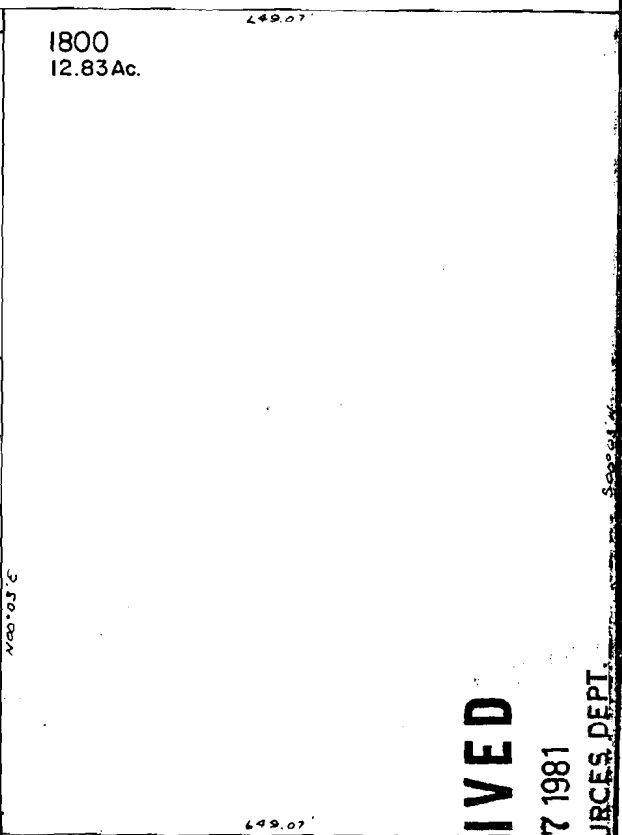
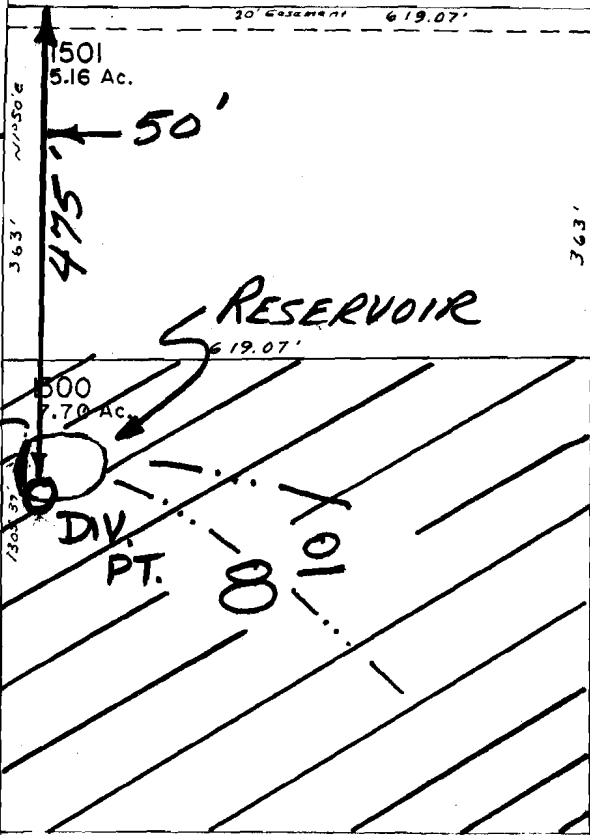
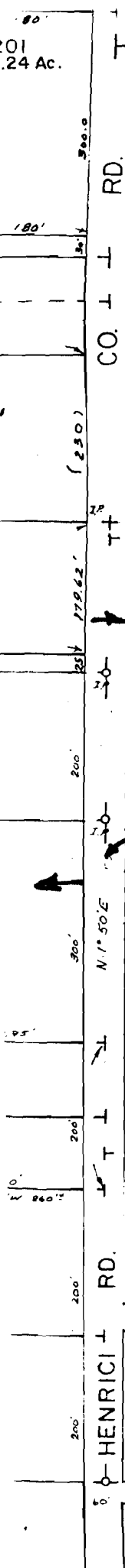
190  
19.55 Ac.

SCALE 1" = 200'

Application No. R-61407 &  
61408  
Permit No. R 8338  
46337

116-05

SEE MAP 3 3E



RECEIVED

MAR 17 1981

WATER RESOURCES DEPT.  
SALEM, OREGON

SE CORNER  
SEC 12

12

7

13

18