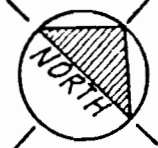


WATER RIGHT MAP WOLSBORN FARMS WATER DIST.

SECTION 16 T 25 R 2W WM
WASHINGTON COUNTY, OREGON

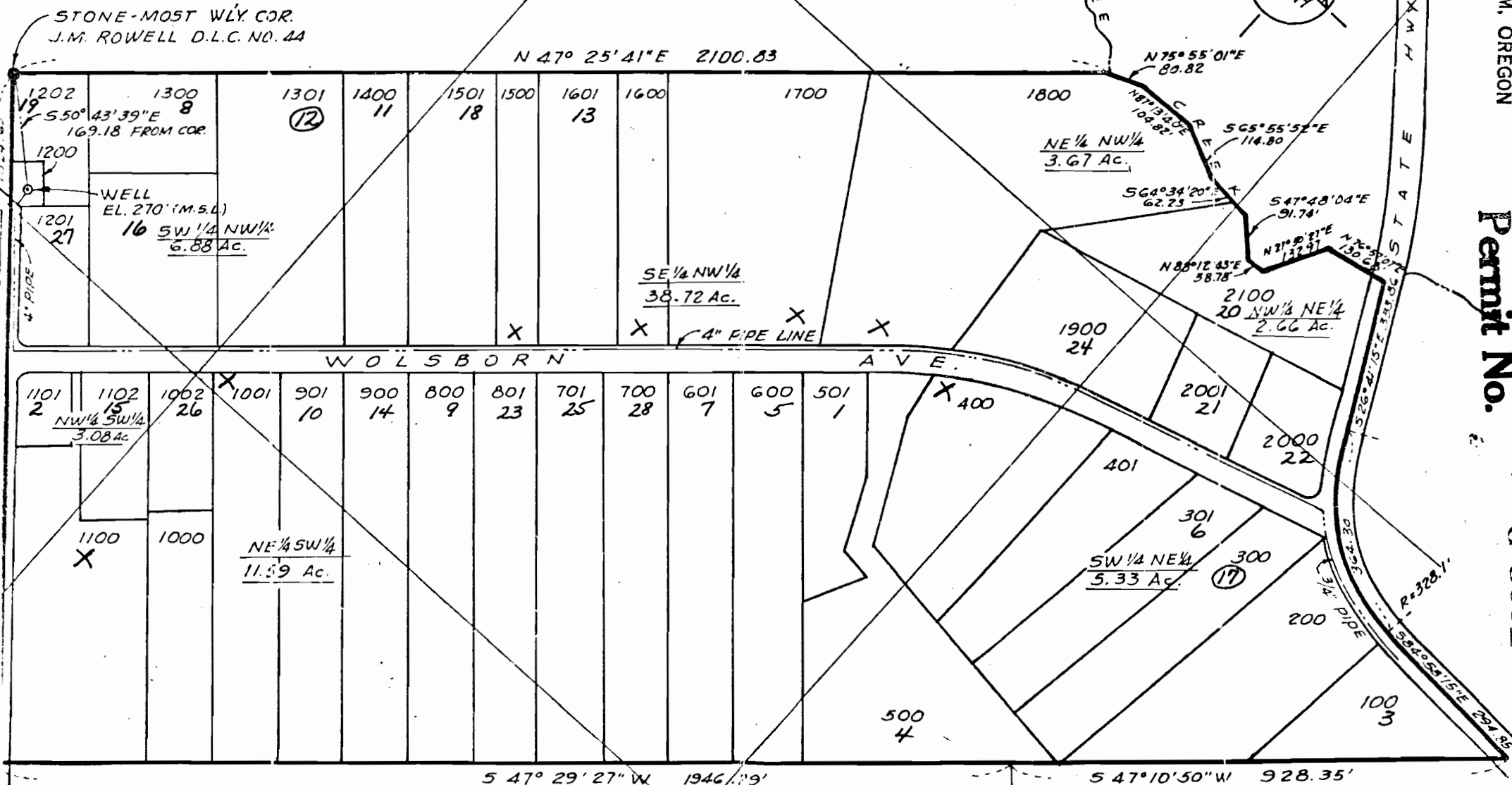
OCTOBER 1975

SCALE 1" = 200'



JUL 5 1980
WATER RESOURCES DEPT
SALEM, OREGON

Application No. G-9800
Permit No. G 9001



STONE-MOST WLY COR.
J.M. ROWELL D.L.C. NO. 44

4" PIPE

4" PIPE LINE

4" PIPE

S 47° 29' 27" W 1946.19'

S 47° 10' 50" W 928.35'

COR. SEC. 16

KLEIN & STUCKEY ENGINEERS
FOREST GROVE, ORE.

1 - MEMBER OF WATER DISTRICT BEFORE 1978.
12 - MEMBER OF WATER DISTRICT SINCE 1978.
X - POSSIBLE WATER HOOK-UPS IN FUTURE.