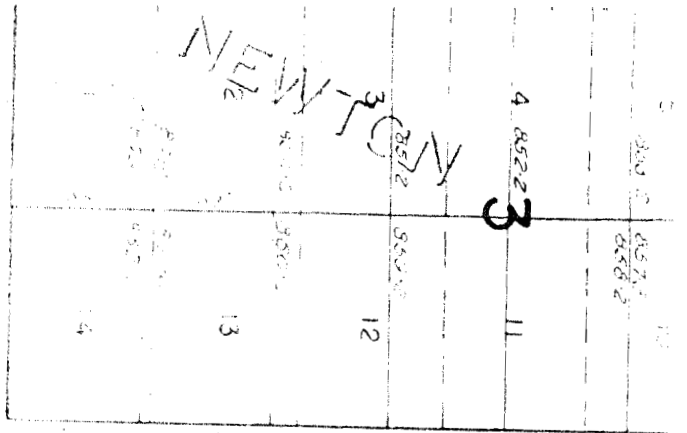


RECEIVED

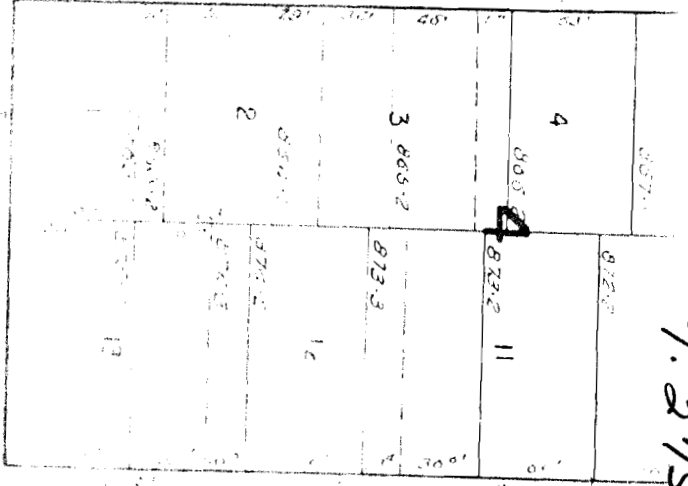
JUN 4 1981

WATER RESOURCES DEPT  
SALEM, OREGON

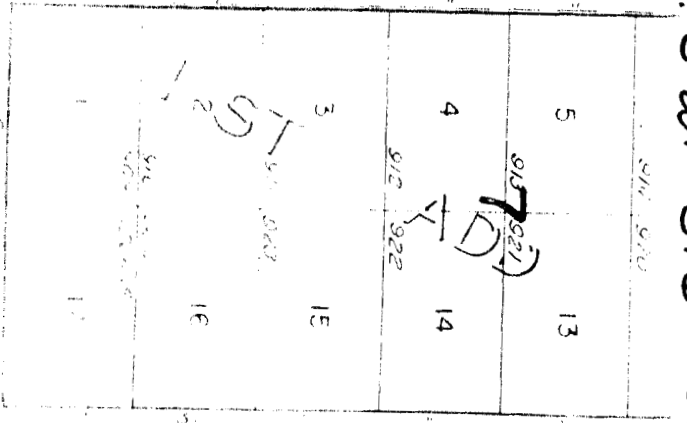
NEWTON CREEK



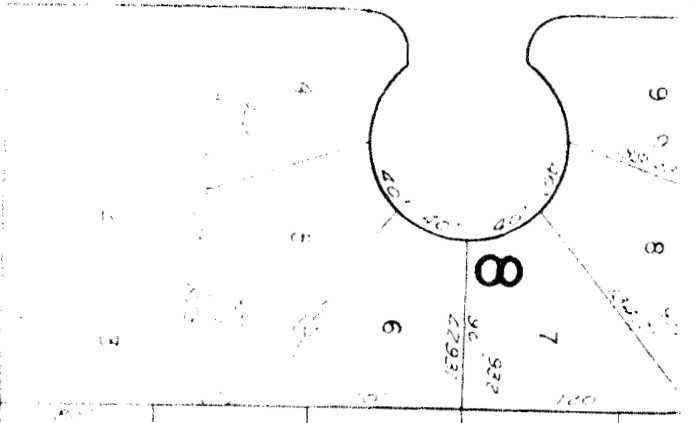
N.E. PORTER



N.E. HUGHES



N.E. FOLLETT



T. 27S. R. 5W. S. 6 SWSW

167

R

CRCR 156

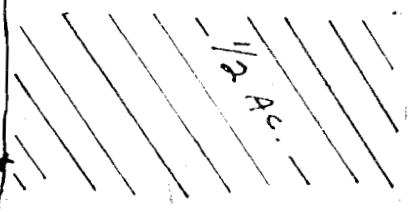
155

5754

5743

57611

Newton  
Creek  
Pump



140' from S.W.  
140' from E.  
900' SW

Application No. 61755  
Permit No. 45816

1 6  
2 7

1" = 100'

FRANCHIGIO VISTA