

3 IW 35

RECEIVED

FEB 16 1977

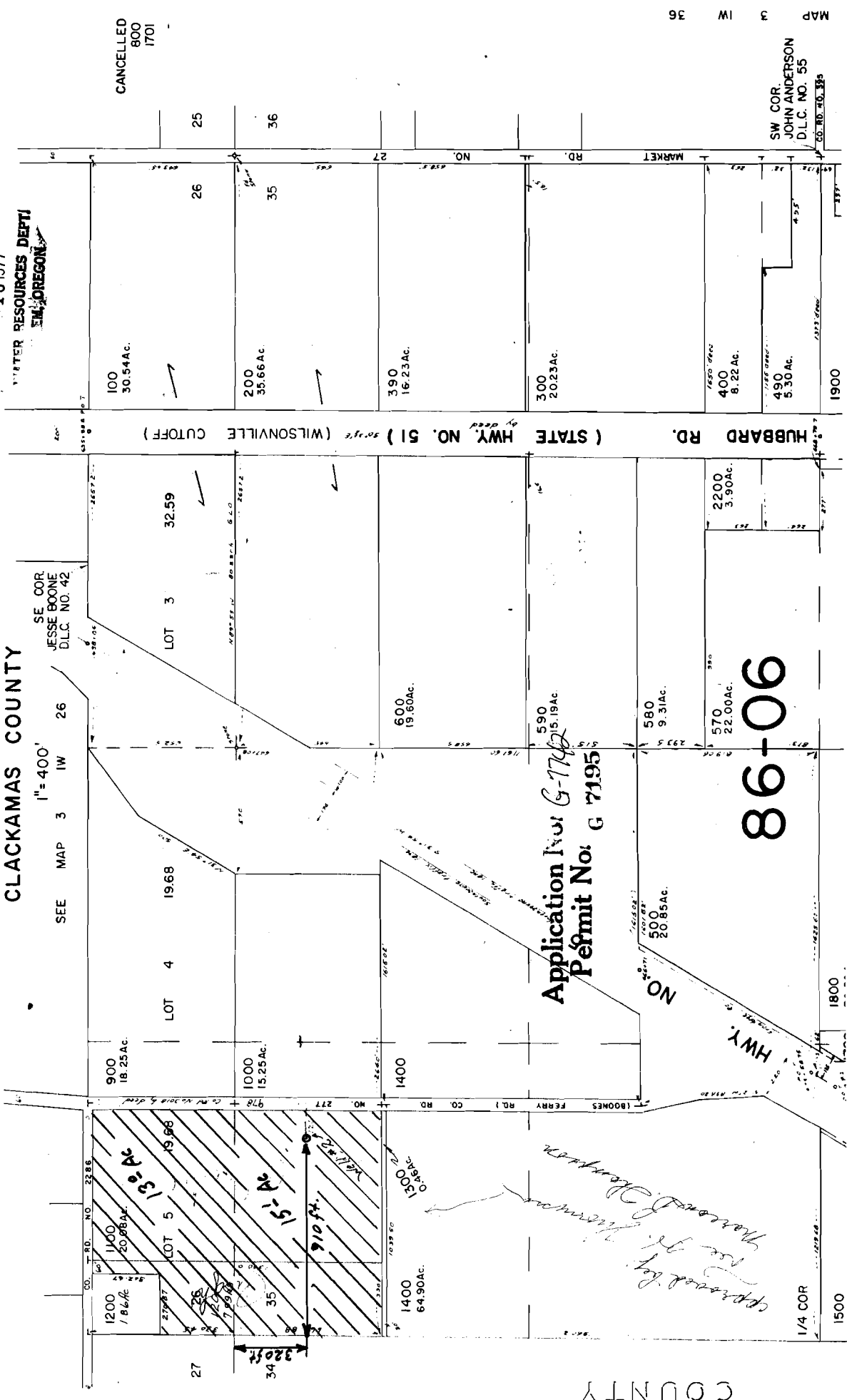
ENTER RESOURCES DEPT
EM. OREGON

SECTION 35 T.3S. R.1W. W.M.

CLACKAMAS COUNTY

SE COR
JESSE BOONE
D.L.C. NO. 42

SEE MAP 3 IW 26



HUBBARD RD. (STATE HWY. NO. 51) (WILSONVILLE CUTOFF)

Application No. G-7192
Permit No. G 7195

86-06

COUNTY

MAP 3 IW 36

SW COR.
JOHN ANDERSON
D.L.C. NO. 55

CO. RD. NO. 335

1900

1800

1/4 COR

1500

CANCELLED
800
1701

Approved by
John Anderson
SW COR of Section 35