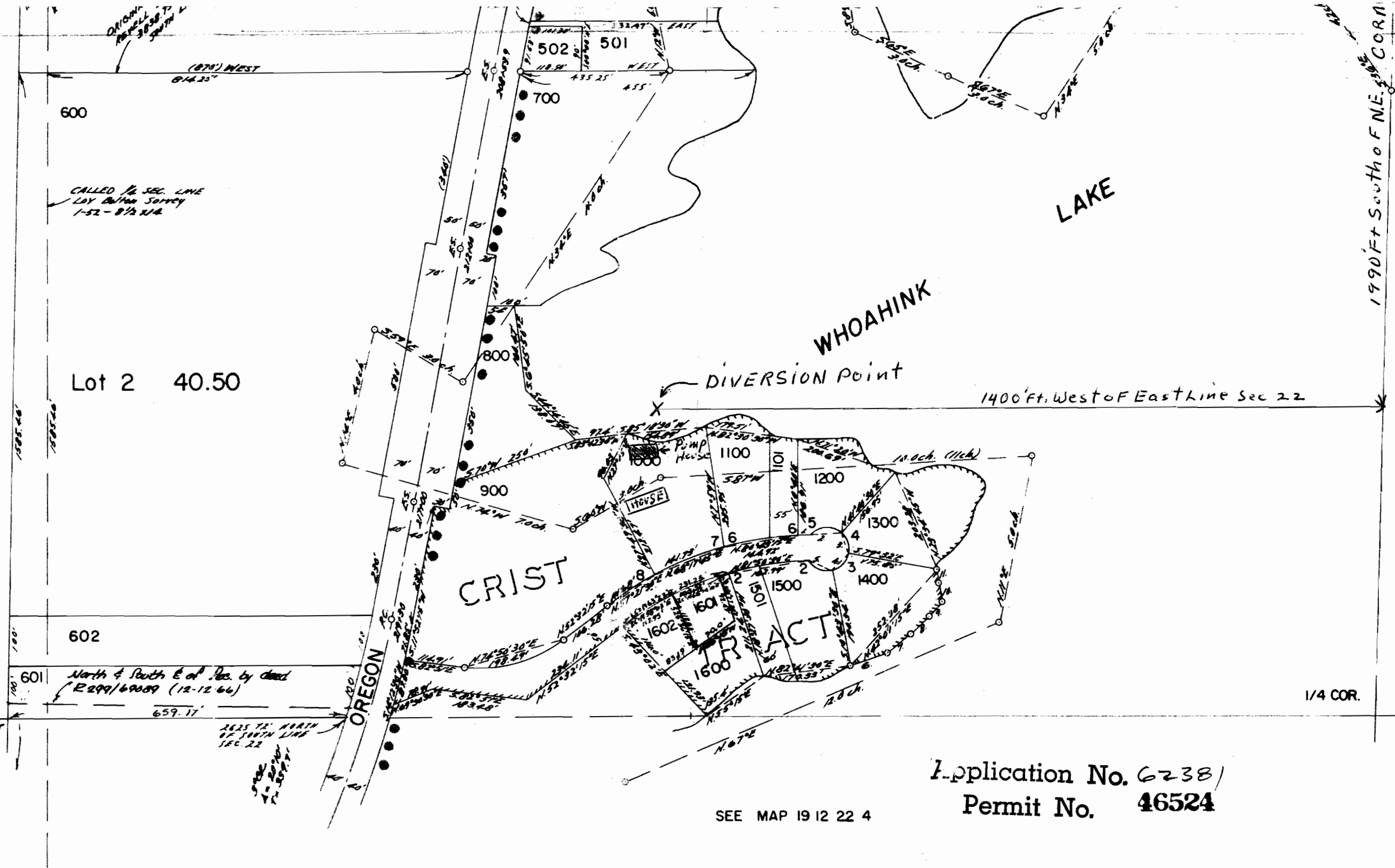


RY
ES



1. N88°0'45"E	38.50'
2. N85°38"E	57.58'
3. S18°55"E	59.27'
4. N44°52"E	45.71'
5. S69°45"E	41.77'
6. N70°21"E	75.58'
7. N50°45"E	60.00'
8. N47°E	58.00'
9. N42°E	40.0'
10. N10°W	35.0'
11. N13°15'W	30.0'

SEE MAP 19 12 23 2

SEE MAP 19 12 22 4

Application No. 6238/
Permit No. 46524

RECEIVED
MAR 15 1982
WATER RESOURCES DEPT
SALMON OREGON