

T-4753

1876
16225

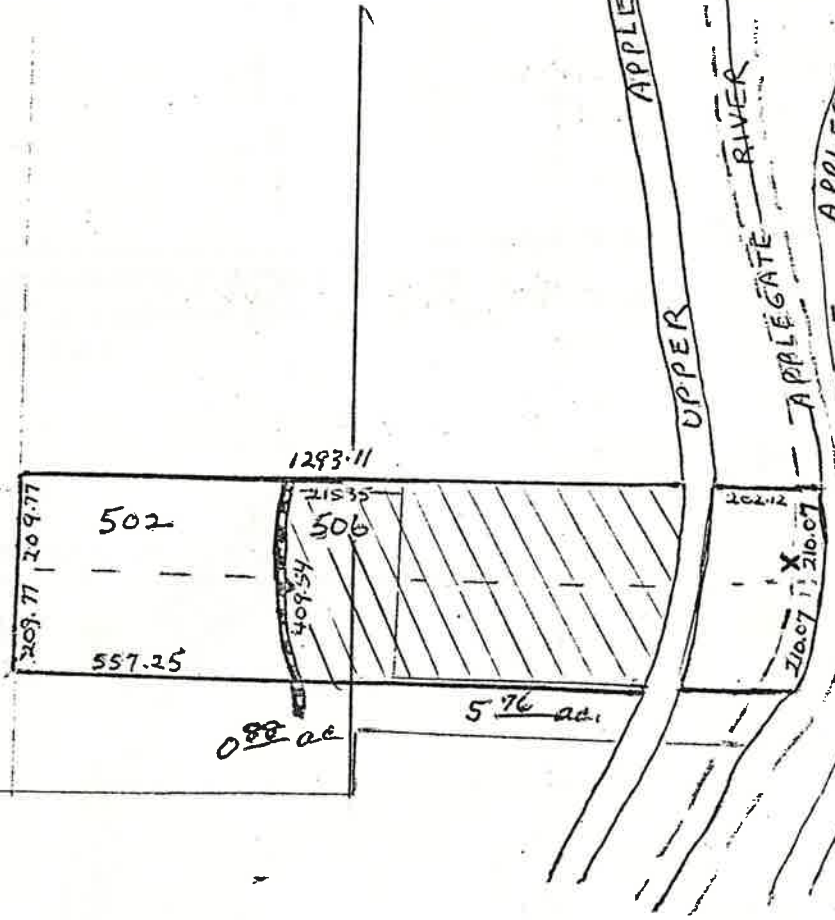
John E. + Grace A. Ke.

P4848

Legend

- Constock Ditch
- ← Current point of diversion on Constock Ditch.
- X - Proposed point of diversion on Applegate River (approx. 187 ft. South from northeast corner of property)

Ares under irrigation



16 15
21 22

RECEIVED

APR 23 1981

WATER RESOURCES DEPT
SALEM, OREGON

39 3W 22