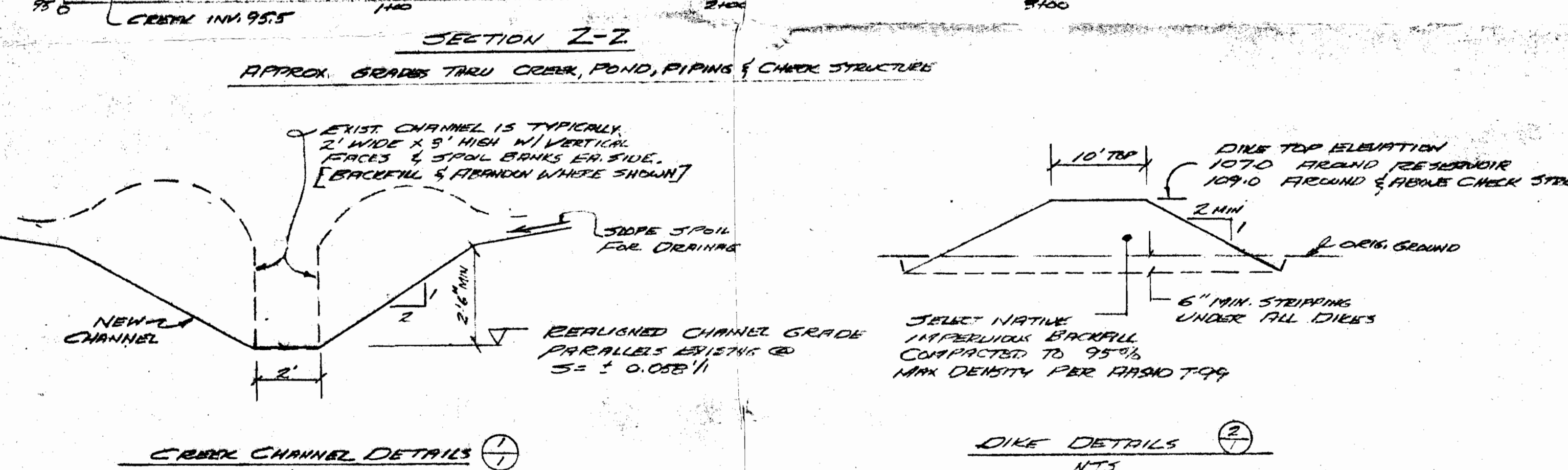
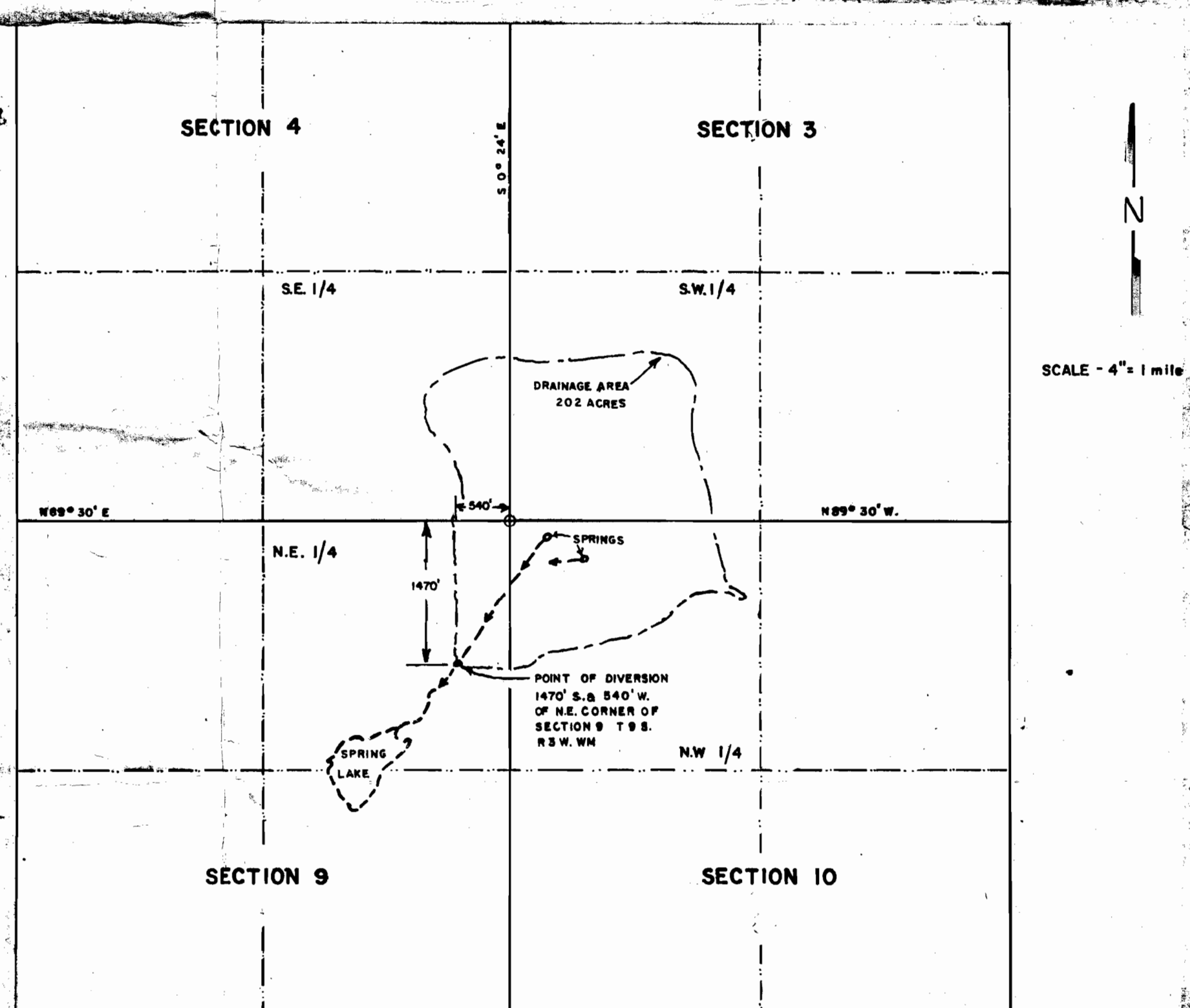
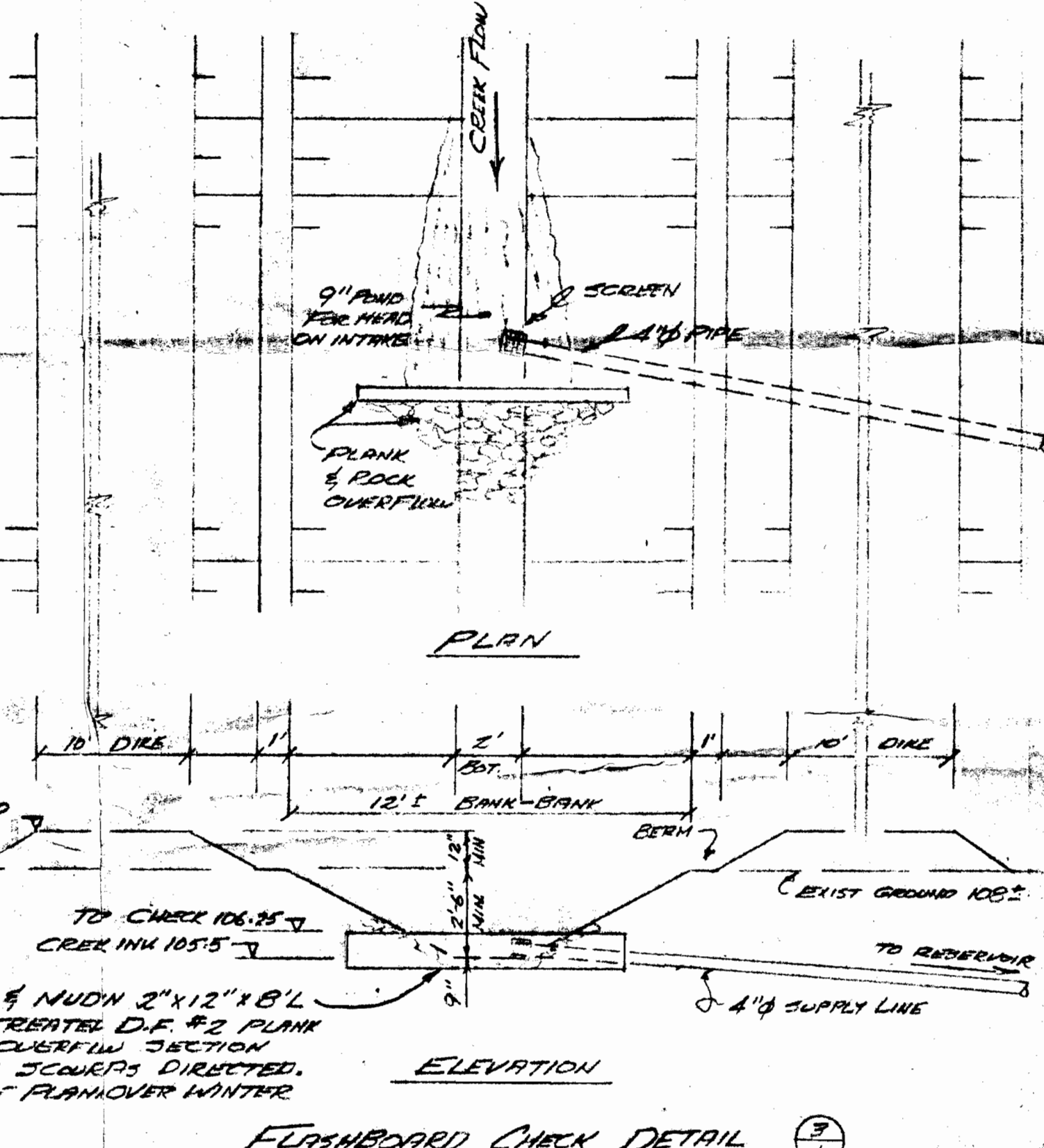
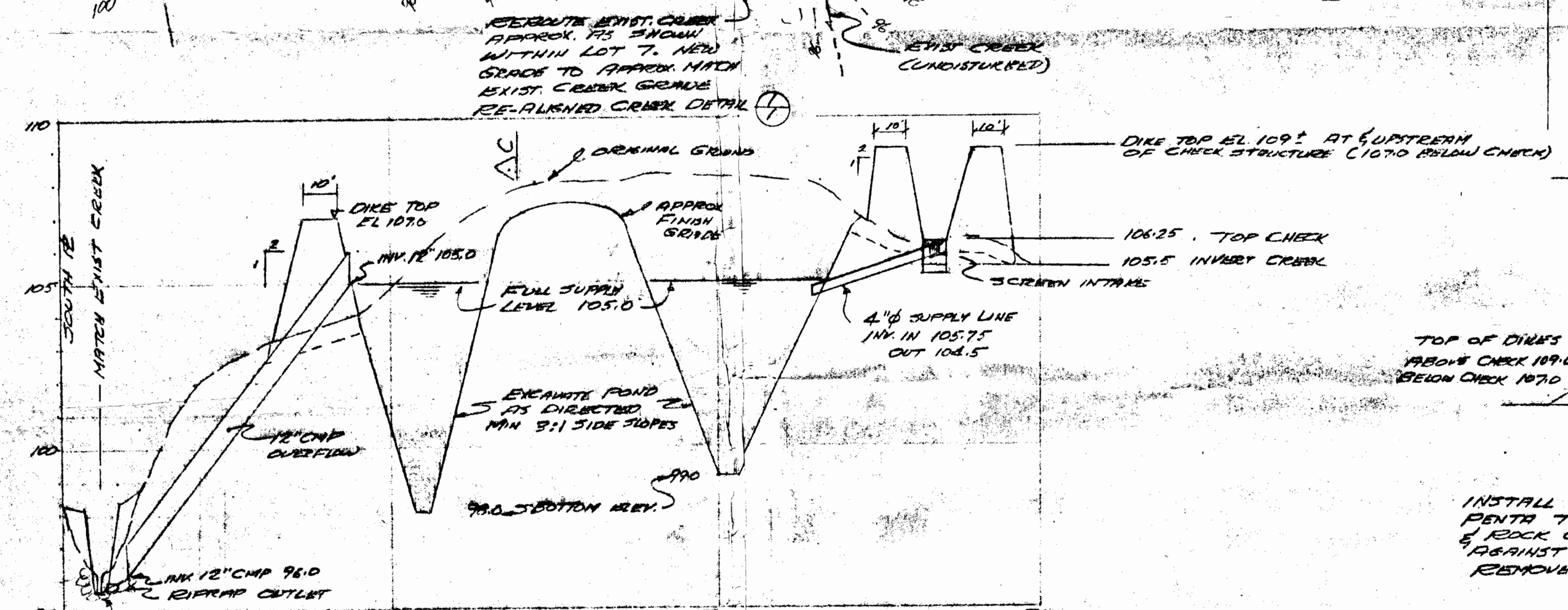


Application No. 2-58014
 Permit No. 58015
 43767
 R 7770



- NOTES**
1. CONTOURS ARE APPROXIMATE; FIELD VERIFY GRADES.
 2. EXCEPT FOR CREEK RE-ALIGNMENT SHOWN, ALL EXISTING DRAINAGEWAYS REMAIN UNDISTURBED.
 3. EXCAVATE CENTRAL PORTION OF CREEK REALIGNMENT FIRST, THEN BREACH OUT END SECTIONS TO MINIMIZE MUDDY WATER.
 4. STRIP ALL GRASS BETWEEN TOES OF DIKES MIN. OF 6\"/>

FRED KUBENA - SALEM, OREGON
WATER RIGHTS MAP & SCHEMATICS FOR RESERVOIR CONSTRUCTION

SCALE: NOTED DATE: OCT. 1978 JOB: 581
 DSJ: HJ WESTECH ENGINEERING, INC. SHEET NO. 1
 DRN: HJ 3421 25TH ST. SE. OF 1
 CKD: HJ SALEM, OREGON