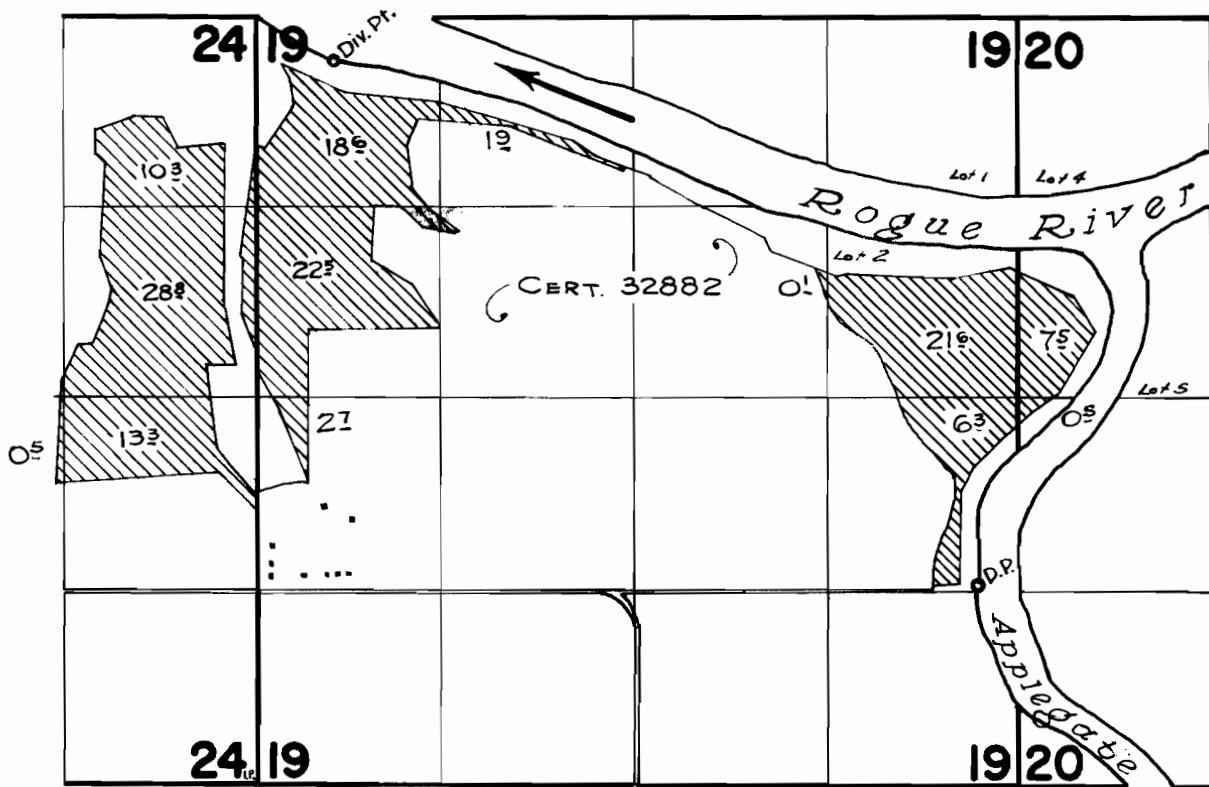


T.36S.R.6&7 W.W.M.



Rogue River Div. Pt. is located 4970 ft. North & 530 ft. East from S.W. Cor. 19
 Applegate River Div. Pt. is located 1370 ft. North & 4930 ft. East from S.W. Cor. 19

FINAL PROOF SURVEY UNDER

Application No. **34928** Permit No. **27402**
 IN NAME OF

FRY FARMS, INC.

Surveyed July 19:20 1965, by *A. Jackson*