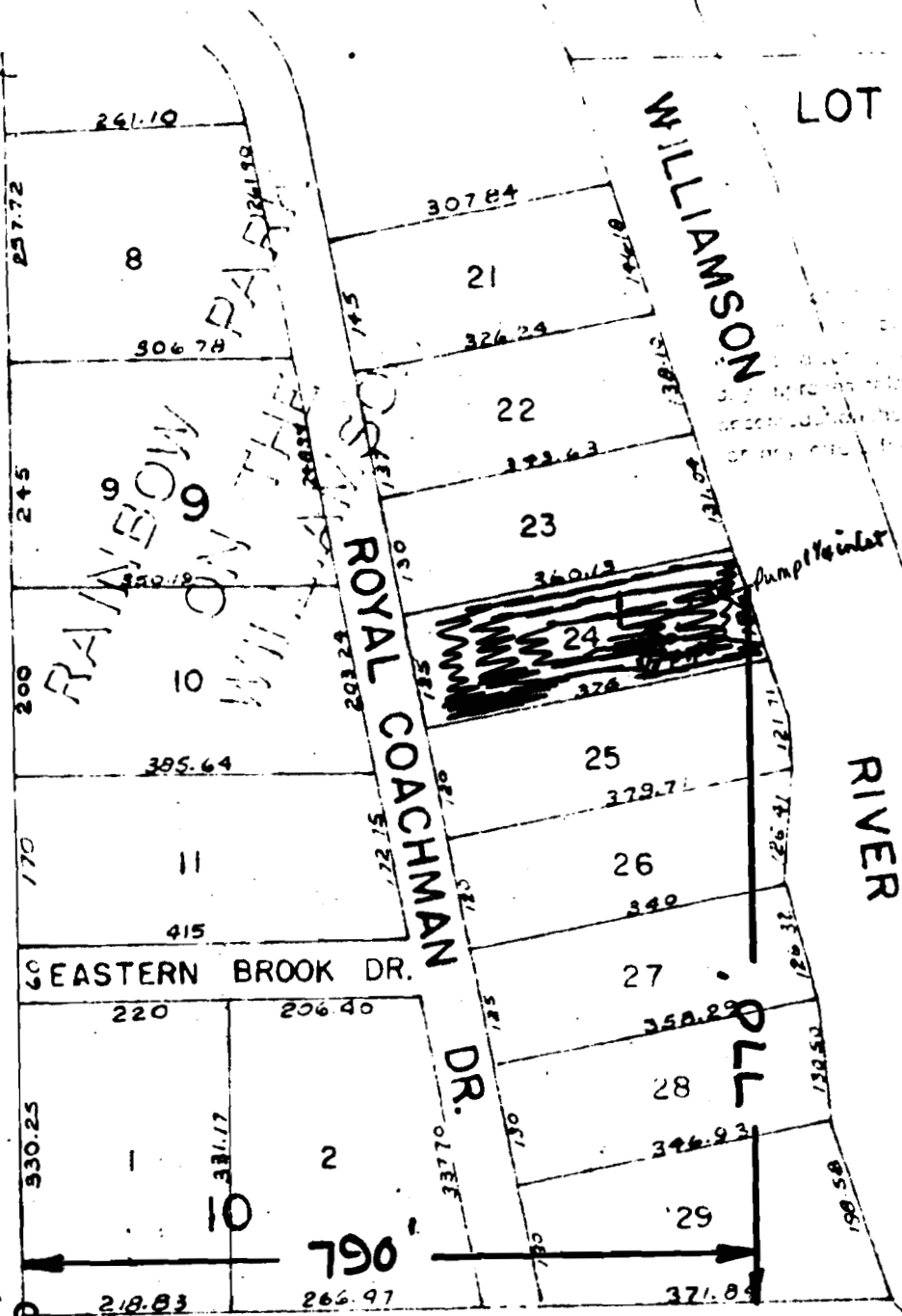


40845 55782  
 RECEIVED  
 JUN 2 1976  
 WATER RESOURCES DEPT  
 SALEM, OREGON

Williamson Rv. New Clamath Marsh



38-9370

NW 1/4  
 Sec 27  
 T 39S R 7E  
 1" = 200'

SW 1/4  
 NW 1/4 NE 1/4  
 Sec 27  
 T 39S R 7E

Application No. 54444  
 Permit No. 40845

8

LOT

