

SW 1/4, NE 1/4  
SE 1/4, NW 1/4 Sec. 34 T.19 S. R.12 W.W.M.

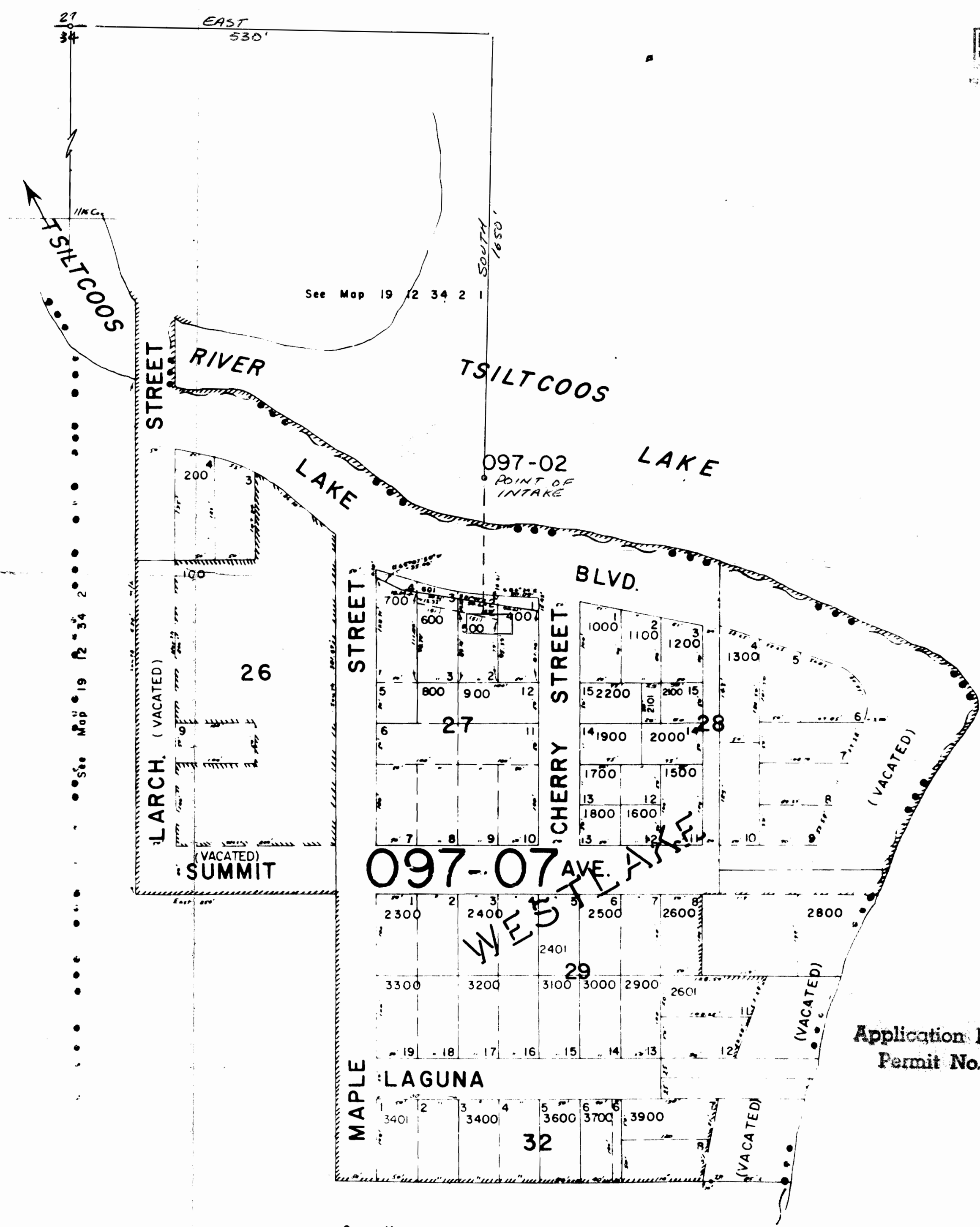
19 12 34 2 4

LANE COUNTY

1"=100'

RECEIVED  
OCT 24 1961  
WATER RESOURCES DEPT.  
SALEM, OREGON

097-16



CODE LINES  
••• CITY LIMITS  
SCHOOL BOUNDARY  
ALL OTHER CODES

Application No. 68105  
Permit No. 18057

See Map 19 12

See Map 19 12