

Section 21 T. 38 S. R. 4W. W. M.

SCALE 1" = 400'

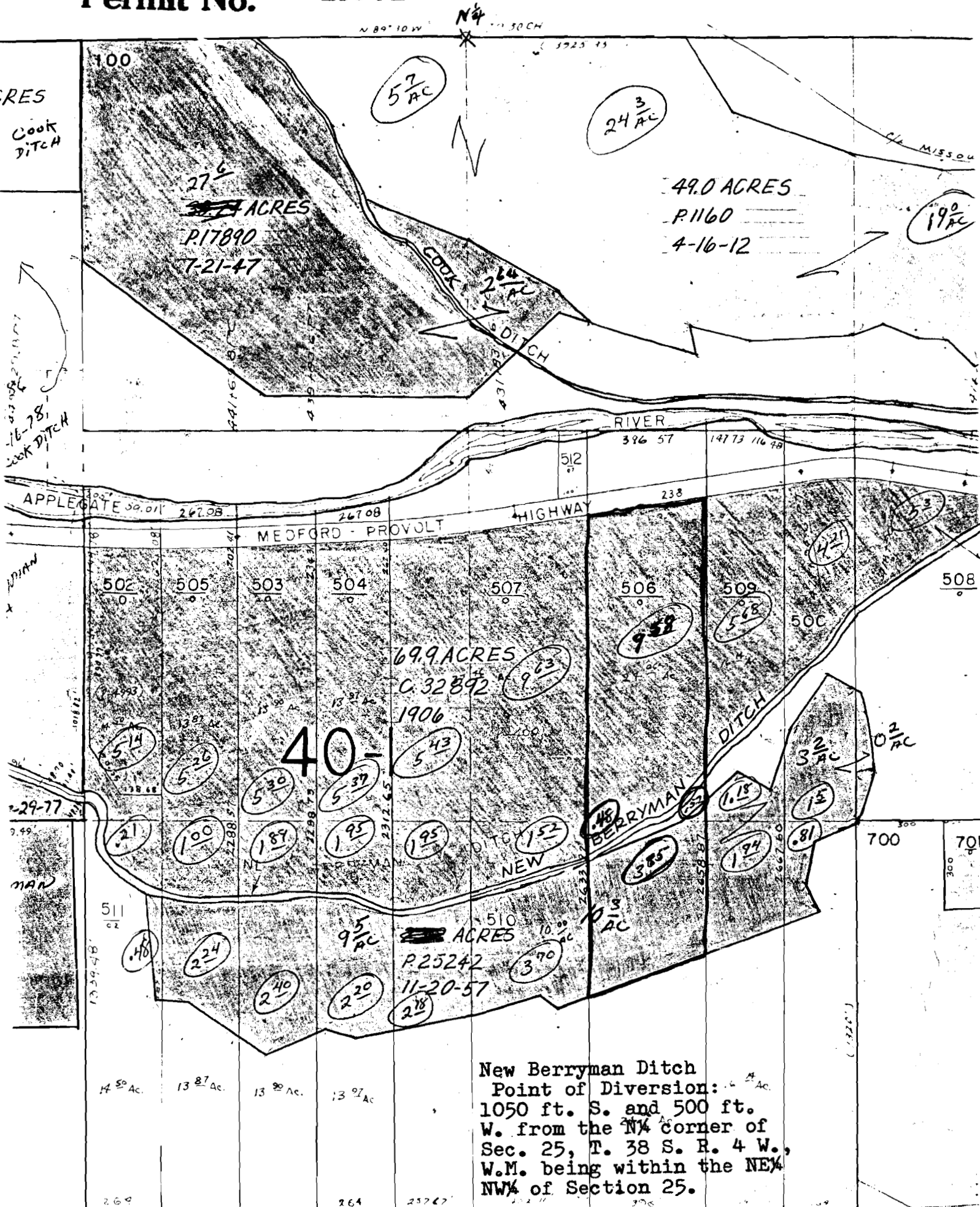
38 4 W 16

RECEIVED

AUG 3 1981

WATER RESOURCES DEPT
SALEM, OREGON

Application No. 62056
Permit No. 45954



New Berryman Ditch
 Point of Diversion: 1/4 Ac.
 1050 ft. S. and 500 ft.
 W. from the NW corner of
 Sec. 25, T. 38 S. R. 4 W.,
 W.M. being within the NE
 NW of Section 25.

Map to accompany application of James M. Allen to appropriate 14 ac. ft water from storage of Applegate Lake Reservoir for supplemental irrigation purposes as indicated on Tax Lot 506, outlined in red above.