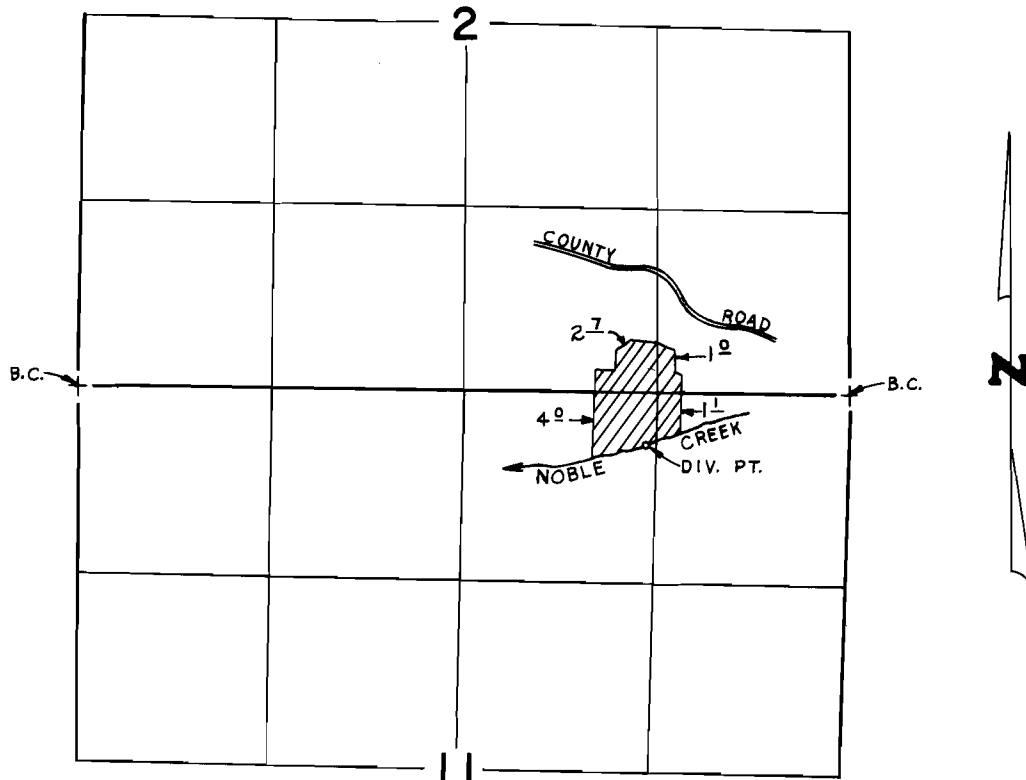


T. 27 S., R. 13 W., W. M.



DIV. PT. LOCATED 350' S. & 1,245' E. FROM N. 1/4 CORNER SEC. 11

SCALE: 4" = 1 mile

FINAL PROOF SURVEY
UNDER

Application No. 61750.. Permit No. 45821.....
IN NAME OF

ARNOLD DEMARIS

Surveyed OCT. 18, 1983., by L. CASHION...