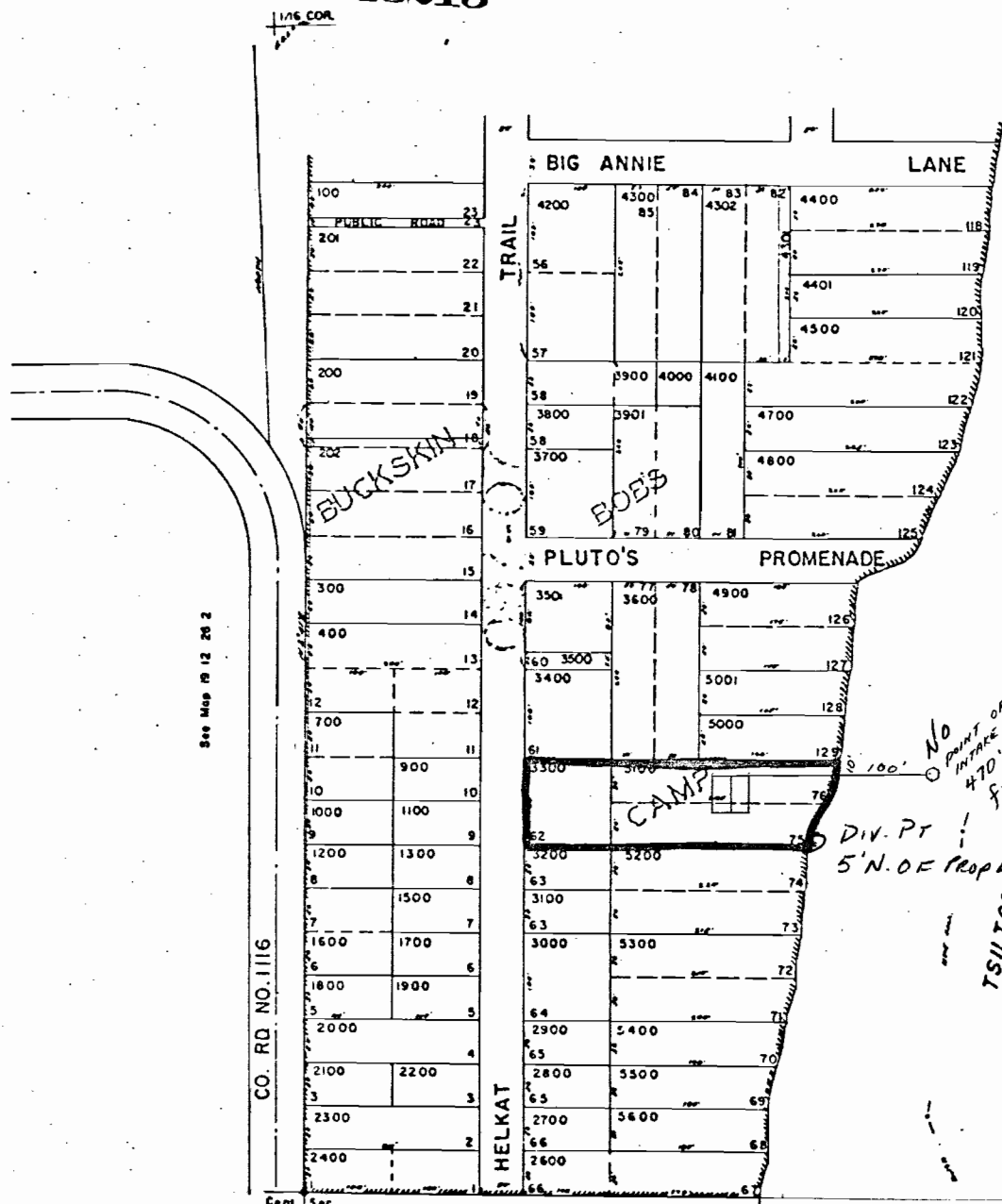
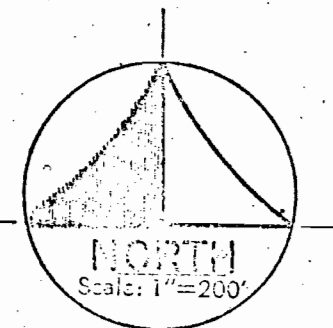


Application No. 67727  
Permit No. 48213

LANE COUNTY

1"=200'

See Map 19 12 26 1 2



See Map 19 12 26 2

See Map 19 12 26

**RECEIVED**

OCT 13 1983

WATER RESOURCES DEPT.  
SALEM, OREGON

097-02

CO. RD NO. 1116

Com. Sec.

097-04

See Map 19 12 26 4

3975

26