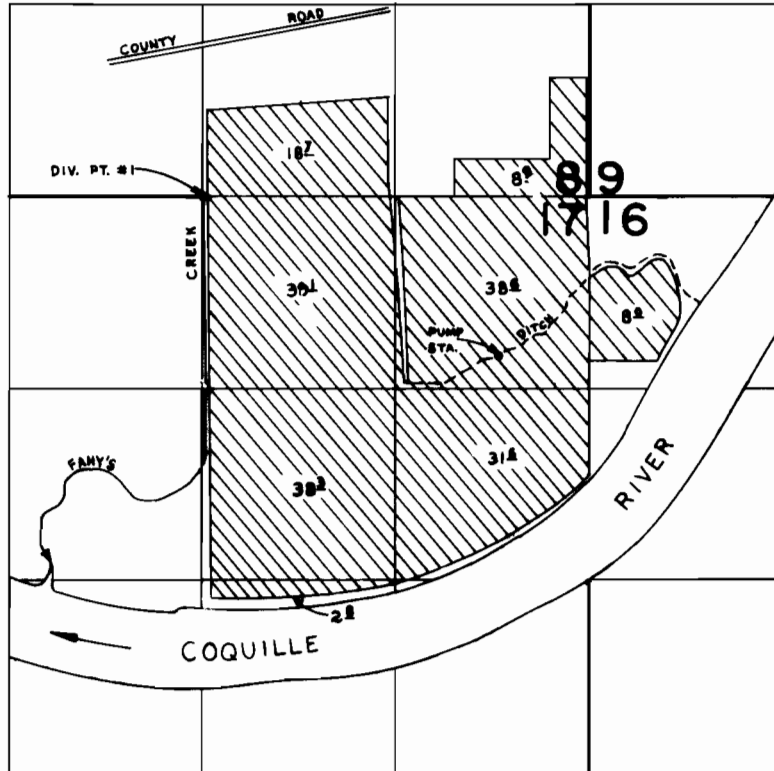


# T. 28 S., R. 14 W., W.M.



DIV. PT. #1 LOCATED 16' E. FROM N. 1/4 CORNER SECTION 17  
DIV. PT. #2 LOCATED 15' N. & 25' E. FROM N. 1/16 CORNER SECTION 17  
PUMP STA. LOCATED 1,090' S. & 630' W. FROM N.E. CORNER SECTION 17

SCALE: 4" = 1 mile

## FINAL PROOF SURVEY UNDER

Application No. 54542. Permit No. 40928....  
IN NAME OF

.....DAVID R. PHILPOTT.....

Surveyed NOV. 1, 1983, by L. CASHION....