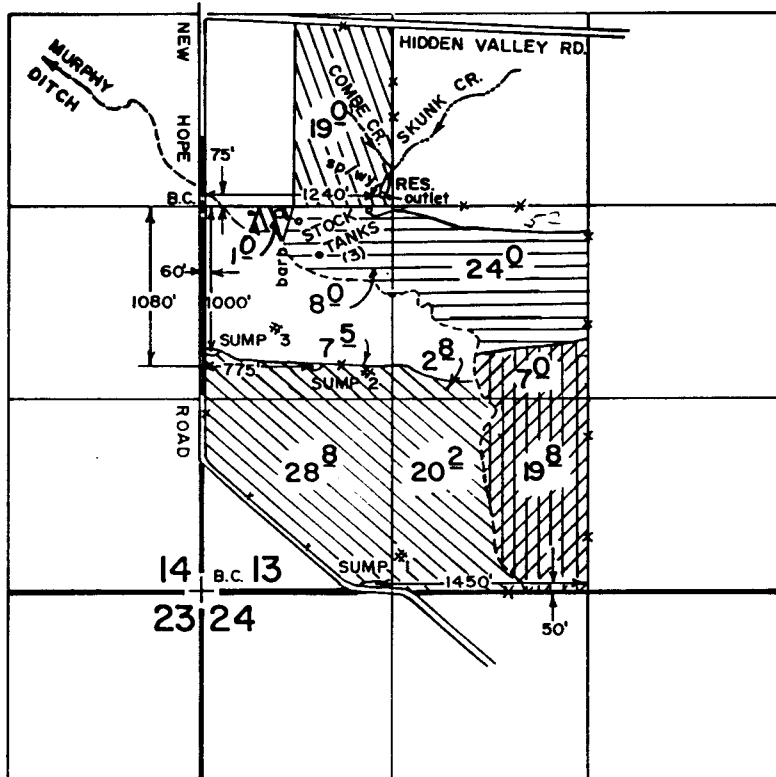


T. 37 S., R. 6 W., W.M.



RECEIVED
 AUG 3 1987
 W.M. DIST. 14
 GRANTZ PARS. ORC.

FINAL PROOF SURVEY

UNDER

67523 48255
 R-56577 R-7348
 56578 43108






Application No. G-8936 Permit No. G-8334

IN NAME OF

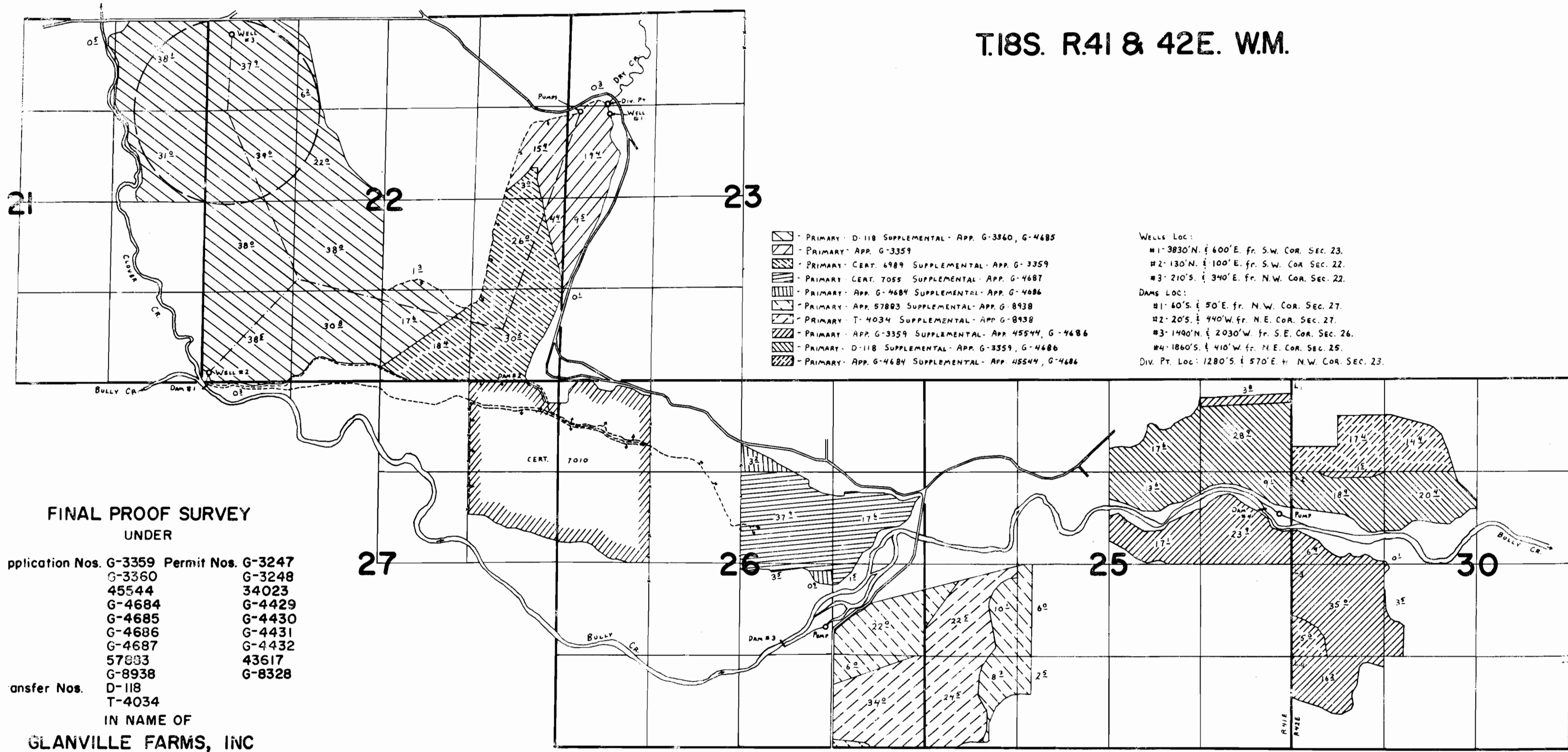
CLYDE C. & D. BUD COMBE

Surveyed OCT. 4 19 83, by B. S. JAMES

SCALE: 4" = 1 MILE

-  SUP. from SUMP #1
-  SUP. from SUMPS #2 & #3
-  SUP. from RES.
-  PRIM. from SUMP #1
-  PRIM. from RES.

T.18S. R.41 & 42E. W.M.



- ▨ - PRIMARY - D-118 SUPPLEMENTAL - APP. G-3360, G-4685
- ▨ - PRIMARY - APP. G-3359
- ▨ - PRIMARY - CERT. 6989 SUPPLEMENTAL - APP. G-3359
- ▨ - PRIMARY - CERT. 7055 SUPPLEMENTAL - APP. G-4687
- ▨ - PRIMARY - APP. G-4684 SUPPLEMENTAL - APP. G-4686
- ▨ - PRIMARY - APP. 57803 SUPPLEMENTAL - APP. G-8938
- ▨ - PRIMARY - T-4034 SUPPLEMENTAL - APP. G-8938
- ▨ - PRIMARY - APP. G-3359 SUPPLEMENTAL - APP. 45544, G-4686
- ▨ - PRIMARY - D-118 SUPPLEMENTAL - APP. G-3359, G-4686
- ▨ - PRIMARY - APP. G-4684 SUPPLEMENTAL - APP. 45544, G-4686

WELLS LOC:
 #1- 3830'N. & 600'E. fr. S.W. COR. SEC. 23.
 #2- 130'N. & 100'E. fr. S.W. COR. SEC. 22.
 #3- 210'S. & 340'E. fr. N.W. COR. SEC. 22.

DAMS LOC:
 #1- 60'S. & 50'E. fr. N.W. COR. SEC. 27.
 #2- 20'S. & 440'W. fr. N.E. COR. SEC. 27.
 #3- 1490'N. & 2030'W. fr. S.E. COR. SEC. 26.
 #4- 1860'S. & 410'W. fr. N.E. COR. SEC. 25.

Div. Pt. Loc: 1280'S. & 570'E. fr. N.W. COR. SEC. 23.

FINAL PROOF SURVEY
 UNDER

Application Nos. G-3359	Permit Nos. G-3247
G-3360	G-3248
45544	34023
G-4684	G-4429
G-4685	G-4430
G-4686	G-4431
G-4687	G-4432
57883	43617
G-8938	G-8328

Transfer Nos.
 D-118
 T-4034

IN NAME OF
GLANVILLE FARMS, INC

Surveyed July 31, 1979, by C. L. HUGHES